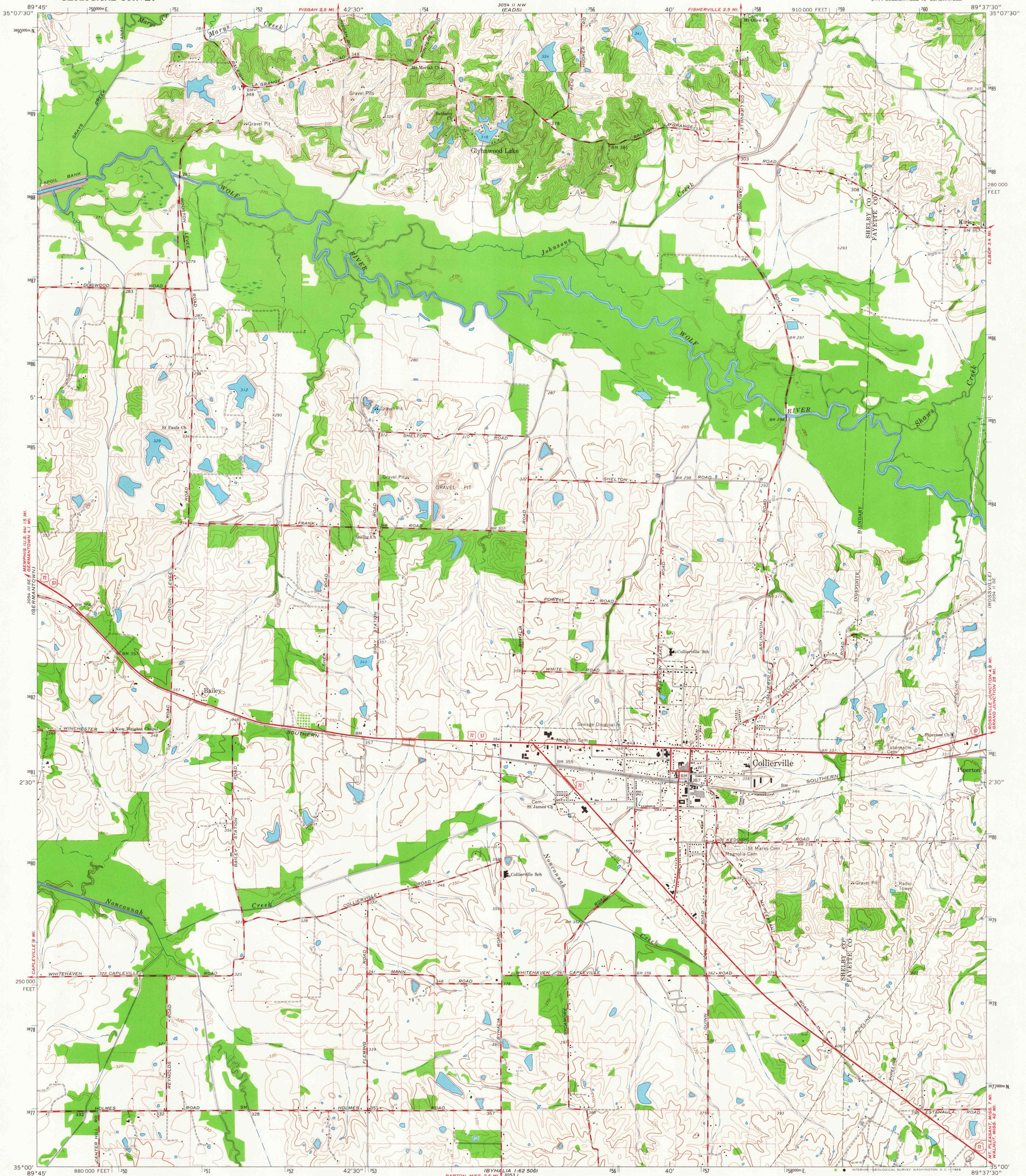


35° 07' 30" N
89° 45' W
MEMPHIS U.S. 401 15 MI.
GERMANTOWN 4.1 MI.

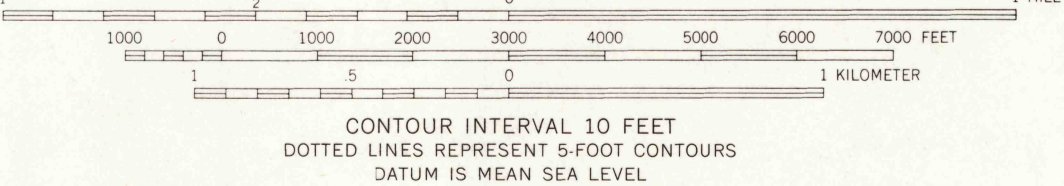
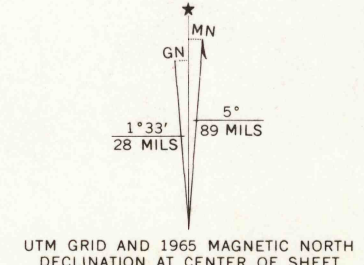
UNITED STATES
DEPARTMENT OF THE INTERIOR
GEOLOGICAL SURVEY

COLLIERVILLE QUADRANGLE
TENNESSEE
7.5 MINUTE SERIES (TOPOGRAPHIC)
SW/4 COLLIERVILLE 15' QUADRANGLE

35° 07' 30" N
89° 45' W
MEMPHIS U.S. 401 15 MI.
GERMANTOWN 4.1 MI.

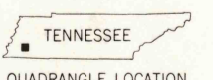


Mapped, edited, and published by the Geological Survey
Control by USGS and USC&GS
Topography by photogrammetric methods from aerial
photographs taken 1963. Field checked 1965
Polyconic projection. 1927 North American datum
10,000-foot grid based on Tennessee coordinate system
1000-meter Universal Transverse Mercator grid ticks,
zone 16, shown in blue
Fine red dashed lines indicate selected fence and field lines where
generally visible on aerial photographs. This information is unchecked



THIS MAP COMPLIES WITH NATIONAL MAP ACCURACY STANDARDS
FOR SALE BY U. S. GEOLOGICAL SURVEY, WASHINGTON, D. C. 20242
AND TENNESSEE DIVISION OF GEOLOGY, NASHVILLE, TENNESSEE
A FOLDER DESCRIBING TOPOGRAPHIC MAPS AND SYMBOLS IS AVAILABLE ON REQUEST

USGS
HISTORICAL FILE
TOPOGRAPHIC DIVISION



ROAD CLASSIFICATION
Heavy-duty — Light-duty
Medium-duty — Unimproved dirt
U. S. Route — State Route

U.S.G.S.
FILE COPY
TOPOGRAPHIC DIVISION

COLLIERVILLE, TENN.
SW/4 COLLIERVILLE 15' QUADRANGLE
N3500—W8937.5/7.5
1965
AMS 3054 II SW—SERIES V841

2655
AUG 12 1966