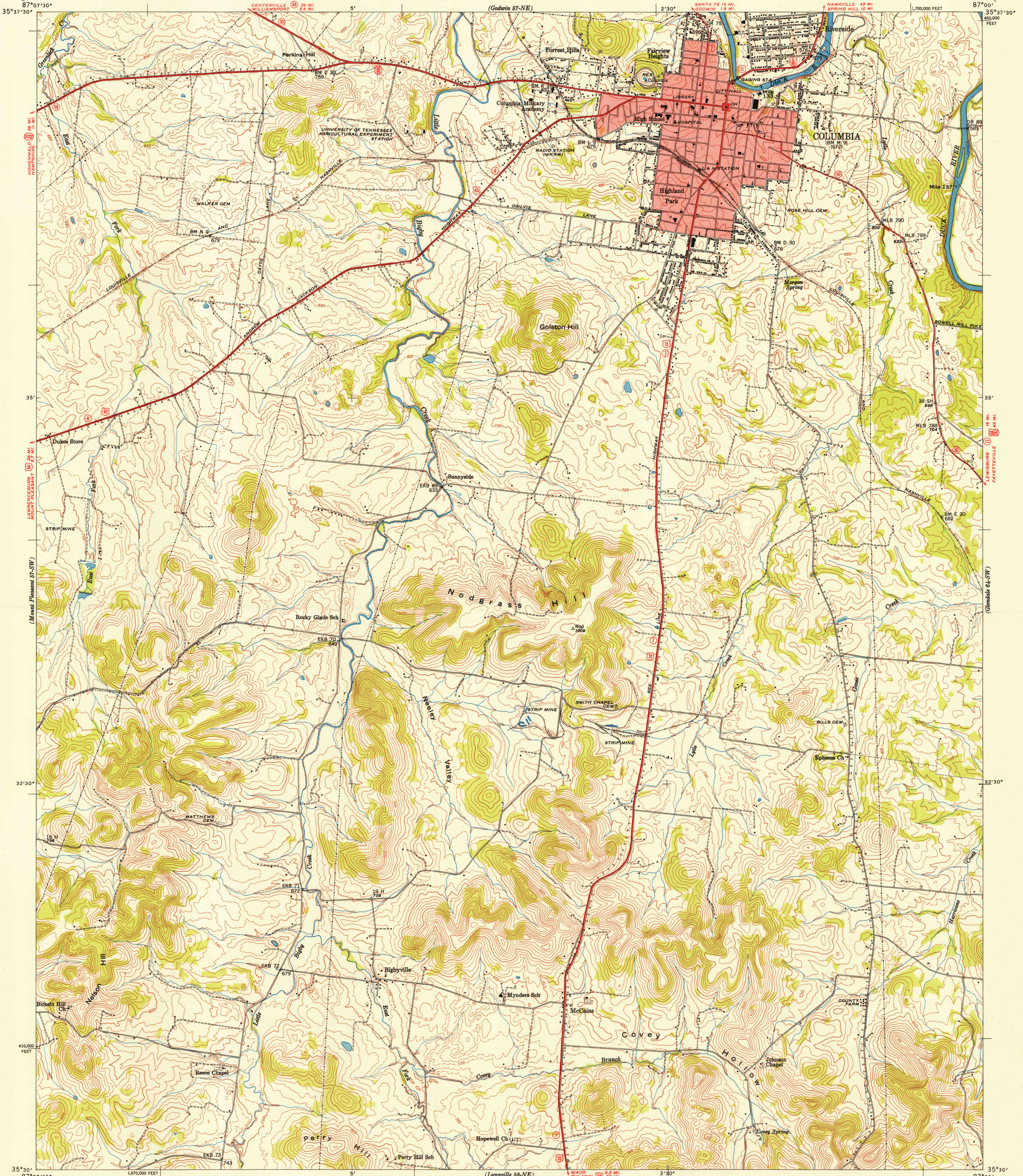


U.S.G.S.
FILE COPY
Inspection and Editing.

UNITED STATES
DEPARTMENT OF THE INTERIOR
GEOLOGICAL SURVEY

UNITED STATES
TENNESSEE VALLEY AUTHORITY
MAPS AND SURVEYS BRANCH

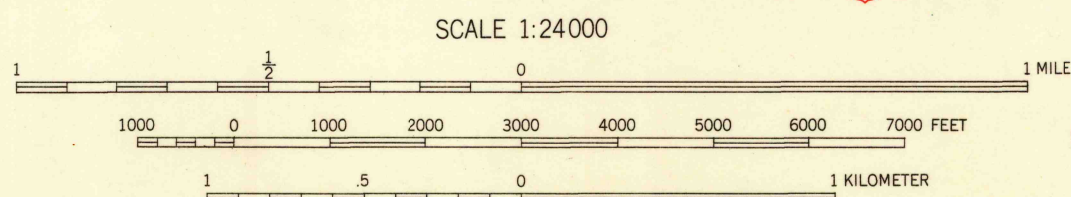
TENNESSEE
(MAURY COUNTY)
COLUMBIA QUADRANGLE
57-SE



Control by USC&GS, USGS, USED, and TVA
Topography by USGS and TVA from aerial
photographs by stereophotogrammetric methods
Field examination by Tennessee Valley Authority, 1946
Maps distributed by the Geological Survey

Red tint indicates areas in which only landmark buildings are shown.

APPROXIMATE MEAN
DECLINATION, 1949



Contour interval 20 feet
Occasional 10 foot contours shown by broken lines
Datum is mean sea level

USGS
HISTORICAL FILE
TOPOGRAPHIC DIVISION

U.S.G.S.
FILE COPY
Inspection and Editing.

Polyconic projection, 1927 North American datum
10,000 foot grid based on Tennessee
rectangular coordinate system

ROUTES USUALLY TRAVELED
HARD, IMPERVIOUS SURFACES
OTHER SURFACE IMPROVEMENTS
U.S. ROUTE STATE ROUTE

COLUMBIA, TENN.
57-SE

Edition of 1949
N3530-W8700/7.5

JAN 24 1950

2190