

3285 (MARTINSVILLE)

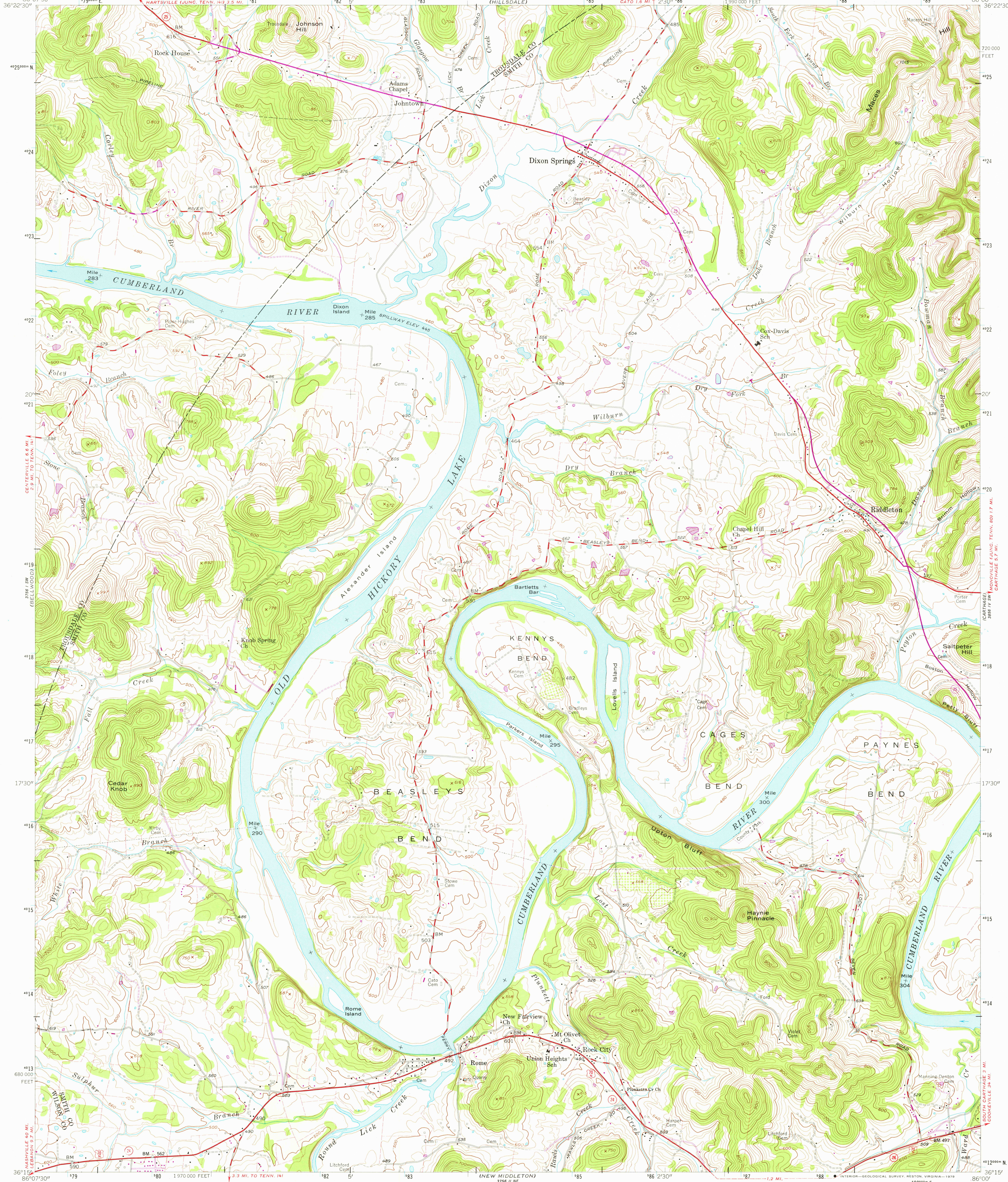
UNITED STATES
DEPARTMENT OF THE INTERIOR
GEOLOGICAL SURVEY



STATE OF TENNESSEE
DEPARTMENT OF CONSERVATION
DIVISION OF GEOLOGY

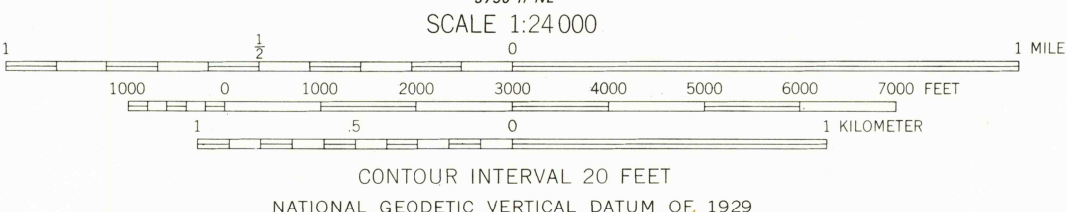
DIXON SPRINGS QUADRANGLE
TENNESSEE
7.5 MINUTE SERIES (TOPOGRAPHIC)

3286 (NEW PLEASANT SHADE)



Mapped, edited, and published by the Geological Survey
Control by USGS, USC&GS, and Tennessee Geodetic Survey
Topography from aerial photographs by photogrammetric methods
Aerial photographs taken 1951. Field check 1958
Polyconic projection. 1927 North American datum
10,000-foot grid based on Tennessee coordinate system
1000-meter Universal Transverse Mercator grid ticks,
zone 16, shown in blue
Fine red dashed lines indicate selected fence and field lines
visible on aerial photographs. This information is unchecked
Unchecked elevations are shown in brown
There may be private inholdings within the boundaries of
the National or State reservations shown on this map
Boundary lines shown in purple compiled from latest
information available from the controlling authority

Revisions shown in purple compiled from aerial photographs
taken 1975 and other source data. This information
not field checked. Map edited 1979



THIS MAP COMPLIES WITH NATIONAL MAP ACCURACY STANDARDS
FOR SALE BY U.S. GEOLOGICAL SURVEY, RESTON, VIRGINIA 22092
AND TENNESSEE DIVISION OF GEOLOGY, NASHVILLE, TENN. 37219
A FOLDER DESCRIBING TOPOGRAPHIC MAPS AND SYMBOLS IS AVAILABLE ON REQUEST

ROAD CLASSIFICATION

Heavy-duty	Light-duty
Medium-duty	Unimproved dirt
U.S. Route	State Route



USGS
Historical File
Topographic Division

DIXON SPRINGS, TENN.
N 3615-W 8600/7.5
1958
PHOTOREVISED 1979
AMS 3756 I SE-SERIES V841

JUN 26 1979

1900