

3884 III NE
COOKEVILLE
(1957)

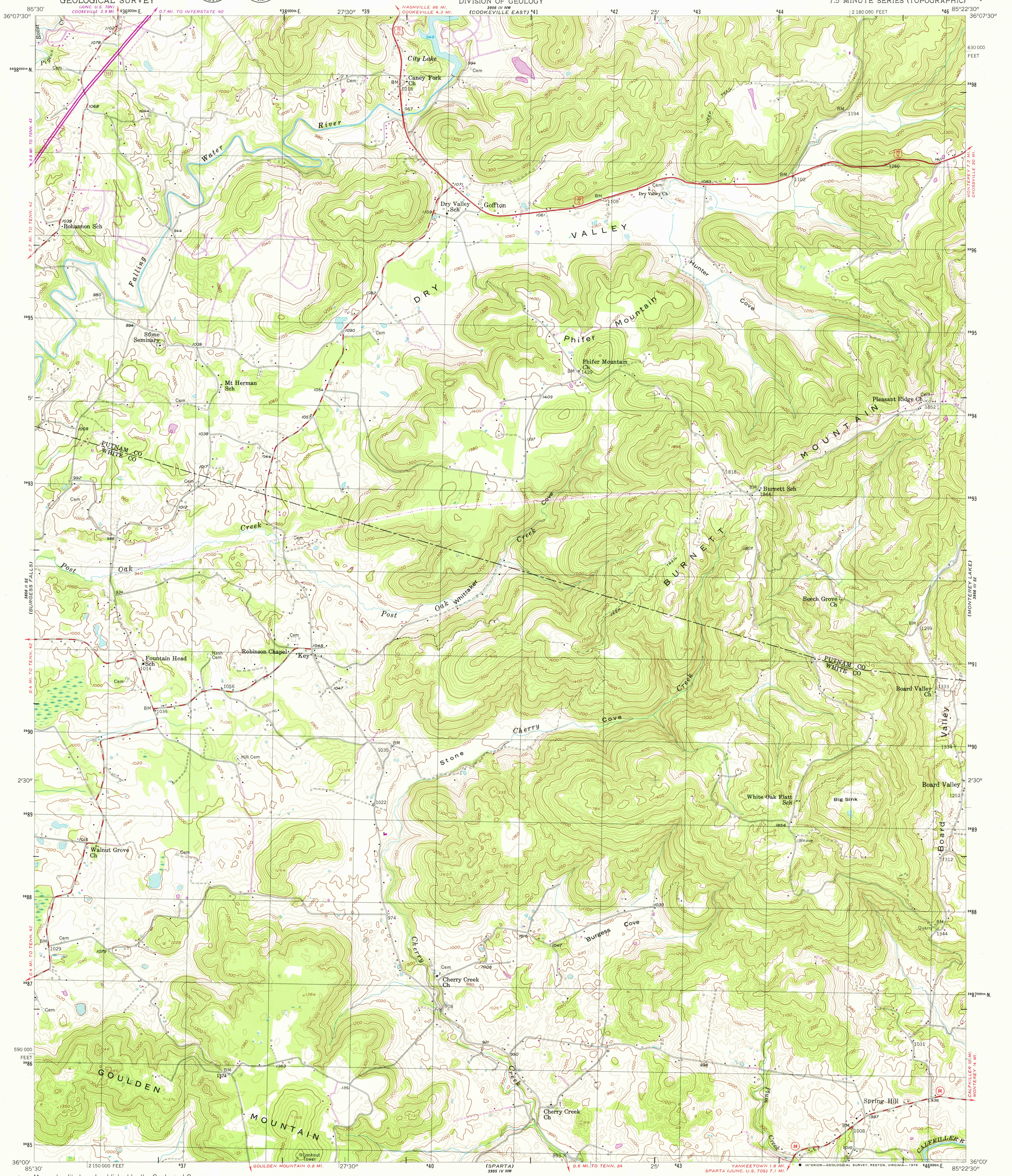
UNITED STATES
DEPARTMENT OF THE INTERIOR
GEOLOGICAL SURVEY



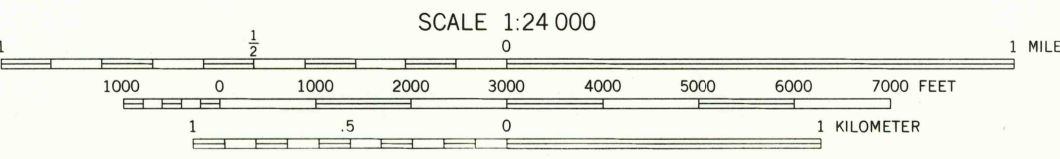
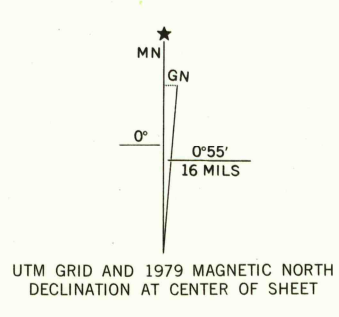
STATE OF TENNESSEE
DEPARTMENT OF CONSERVATION
DIVISION OF GEOLOGY

DRY VALLEY QUADRANGLE
TENNESSEE
7.5 MINUTE SERIES (TOPOGRAPHIC)

3884 III NE
MONTEEY
(1957)



Mapped, edited, and published by the Geological Survey
Control by USGS and USC&GS
Topography from aerial photographs by multiplex methods
Aerial photographs taken 1954. Field check 1956
Polyconic projection. 1927 North American datum
10,000-foot grid based on Tennessee coordinate system
Unchecked elevations are shown in brown
1000-meter Universal Transverse Mercator grid, zone 16
Revisions shown in purple and woodland compiled from
aerial photographs taken 1976 and other source data
This information not field checked. Map edited 1979



CONTOUR INTERVAL 20 FEET
NATIONAL GEODETIC VERTICAL DATUM OF 1929

THIS MAP COMPLIES WITH NATIONAL MAP ACCURACY STANDARDS
FOR SALE BY U. S. GEOLOGICAL SURVEY, RESTON, VIRGINIA 22092
AND TENNESSEE DIVISION OF GEOLOGY, NASHVILLE, TENN. 37219
A FOLDER DESCRIBING TOPOGRAPHIC MAPS AND SYMBOLS IS AVAILABLE ON REQUEST

ROAD CLASSIFICATION

Heavy-duty	Light-duty
Medium-duty	Unimproved dirt
U. S. Route	State Route

USGS
Historical File
Topographic Division
DRY VALLEY, TENN.
N3600-W8522.5/7.5
1956
PHOTOREVISED 1979
AMS 3956 III SW-SERIES Y841

JUL 18 1979

1350