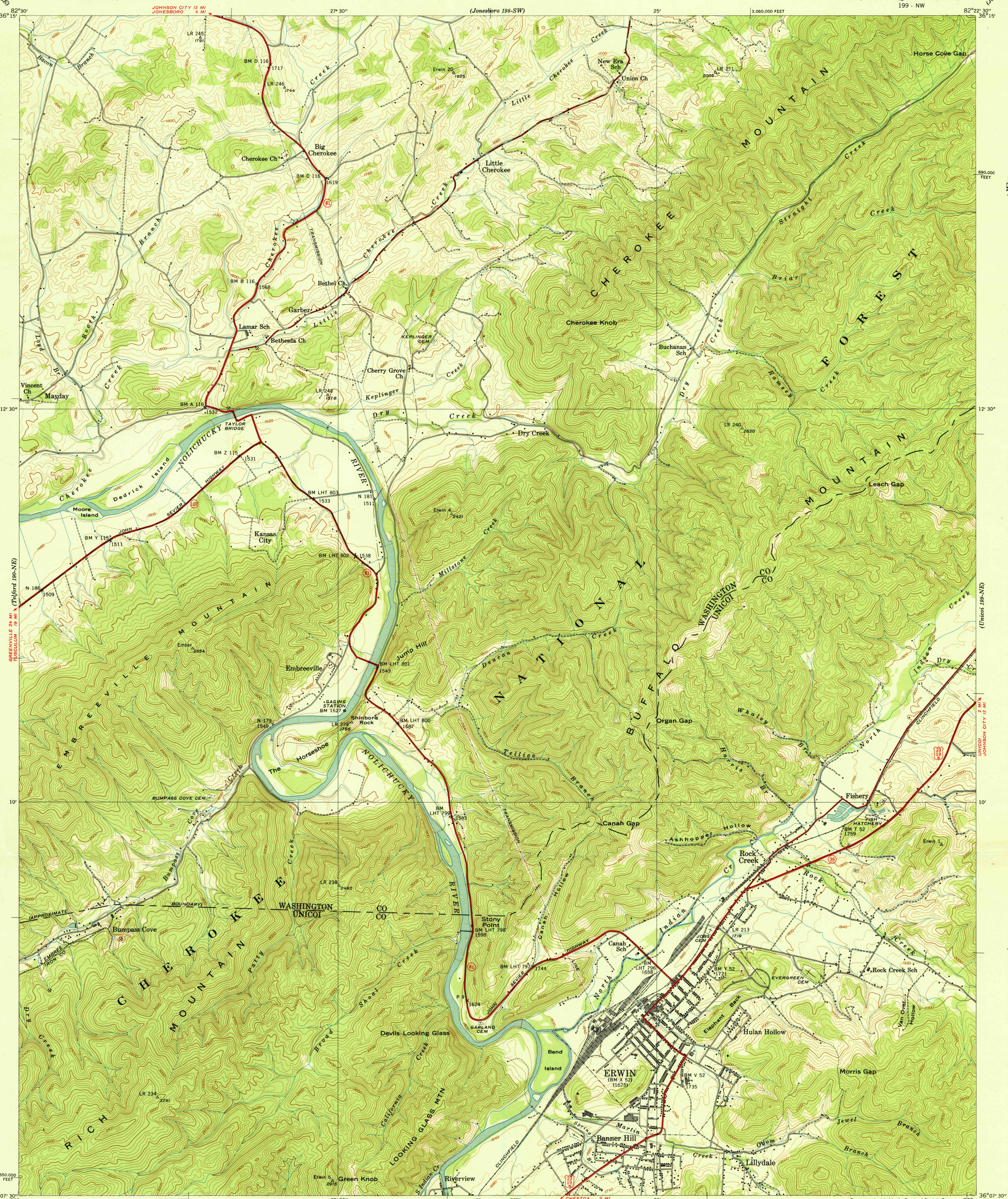


U. S. G. S.
FILE COPY
Inspection and Editing.

UNITED STATES
TENNESSEE VALLEY AUTHORITY
MAPS AND SURVEYS DIVISION

TENNESSEE
ERWIN QUADRANGLE
199 - NW

(Johnson City 198-520)



Control by USC&GS, USGS, and TVA.
Topography by Fairchild Aerial Surveys, Inc.
Field examination by Tennessee Valley Authority - 1939
Office inspection and review by the Geological Survey.
Maps distributed by the Geological Survey.

APPROXIMATE MEAN
DECLINATION, 1939

Scale 24,000
1 inch = 2 miles
1 centimeter = 2 kilometers
Contour interval 40 feet with 20 foot contours shown by broken line
Datum is mean sea level

USGS
HISTORICAL FILE
TOPOGRAPHIC DIVISION
U. S. G. S.
FILE COPY

PAVEMENT, ALL TYPES
OTHER IMPROVED SURFACES, GRAVEL, ETC.
U. S. HIGHWAY
ERWIN, TENN.
199 - NW
Edition of 1939
N3607.5-W8222.5/7.5

JUN 20 1940