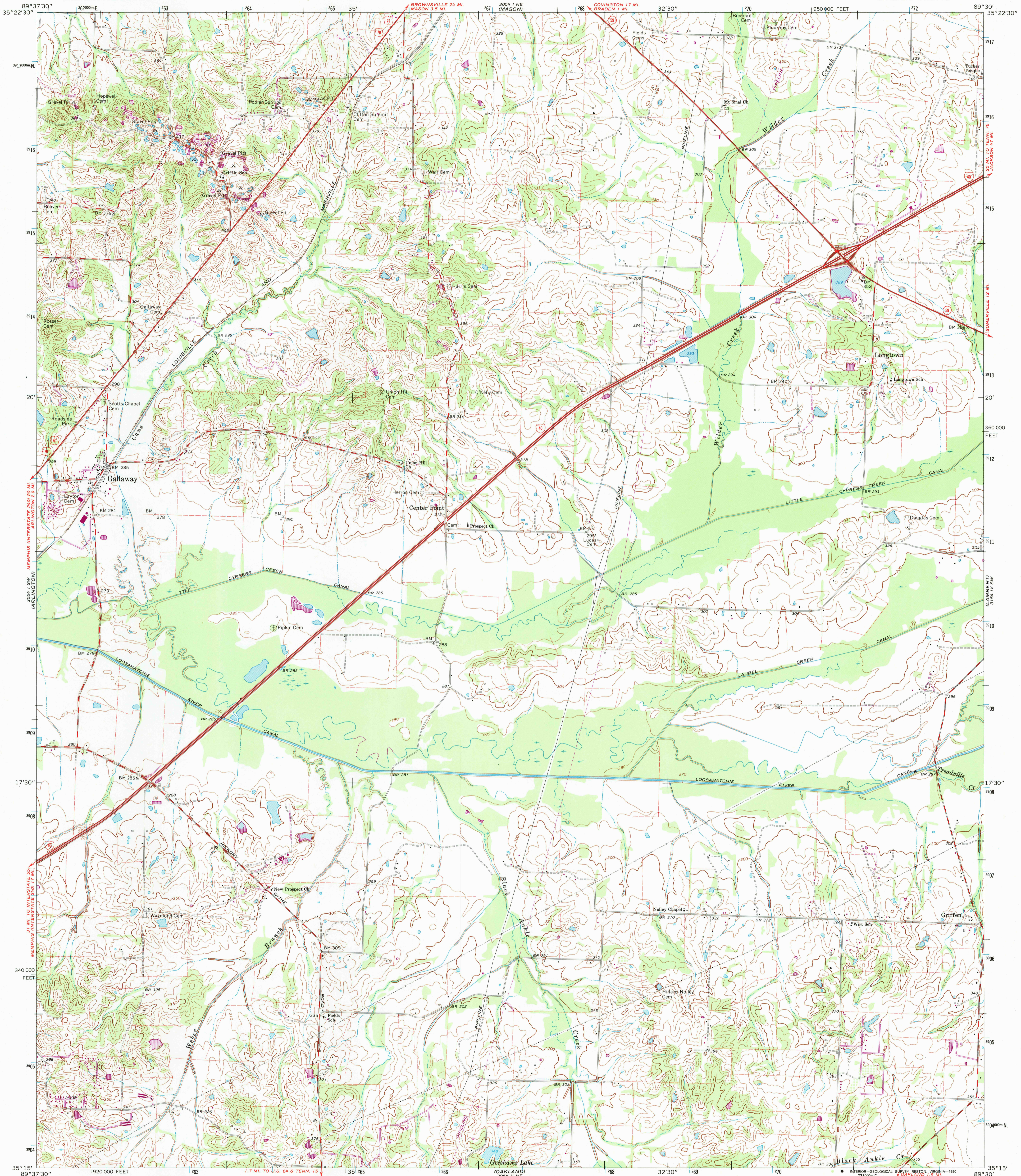


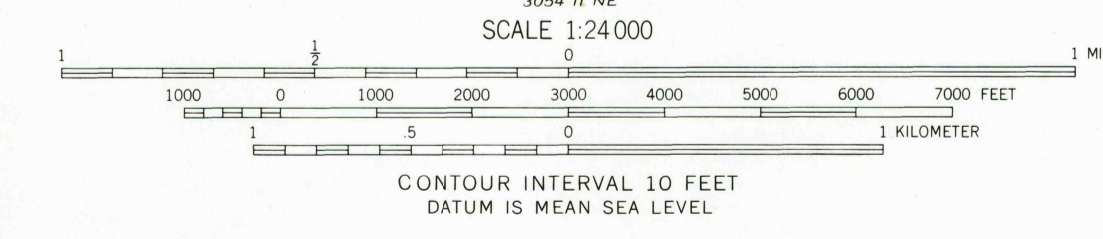
UNITED STATES
DEPARTMENT OF THE INTERIOR
GEOLOGICAL SURVEY

GALLAWAY QUADRANGLE
TENNESSEE-FAYETTE CO.
7.5 MINUTE SERIES (TOPOGRAPHIC)
SE/4 MASON 15' QUADRANGLE



Mapped, edited, and published by the Geological Survey
Control by USGS and USC&GS
Topography by photogrammetric methods from aerial
photographs taken 1963. Field checked 1965
Polyconic projection. 1927 North American datum
10,000-foot grid based on Tennessee coordinate system
1000-meter Universal Transverse Mercator grid ticks,
zone 16, shown in blue
Fine red dashed lines indicate selected fence and field lines where
generally visible on aerial photographs. This information is unchecked
Revisions shown in purple compiled in cooperation with
State of Tennessee agencies from aerial photographs
taken 1973. This information not field checked

UTM GRID AND 1973 MAGNETIC NORTH
DECLINATION AT CENTER OF SHEET
1°29' 26" MILS
71 MILS



THIS MAP COMPLIES WITH NATIONAL MAP ACCURACY STANDARDS
FOR SALE BY U.S. GEOLOGICAL SURVEY, DENVER, COLORADO 80225, OR RESTON, VIRGINIA 22092
AND TENNESSEE DEPARTMENT OF CONSERVATION, DIVISION OF GEOLOGY, NASHVILLE, TENN. 37243
A FOLDER DESCRIBING TOPOGRAPHIC MAPS AND SYMBOLS IS AVAILABLE ON REQUEST

ROAD CLASSIFICATION

| | |
|------------------|-----------------|
| Heavy-duty | Light-duty |
| Medium-duty | Unimproved dirt |
| Interstate Route | U.S. Route |
| | State Route |

TENNESSEE
 QUADRANGLE LOCATION

USGS HISTORICAL MAP
 MAR 15 1991
 REC'D FILE COPY

GALLAWAY, TENN.
 SE/4 MASON 15' QUADRANGLE
 N3515-W8930/7.5
 PHOTOINSPECTED 1981
 1965
 PHOTOREVISED 1973
 AMS 3054 I SE-SERIES V841
 C 5