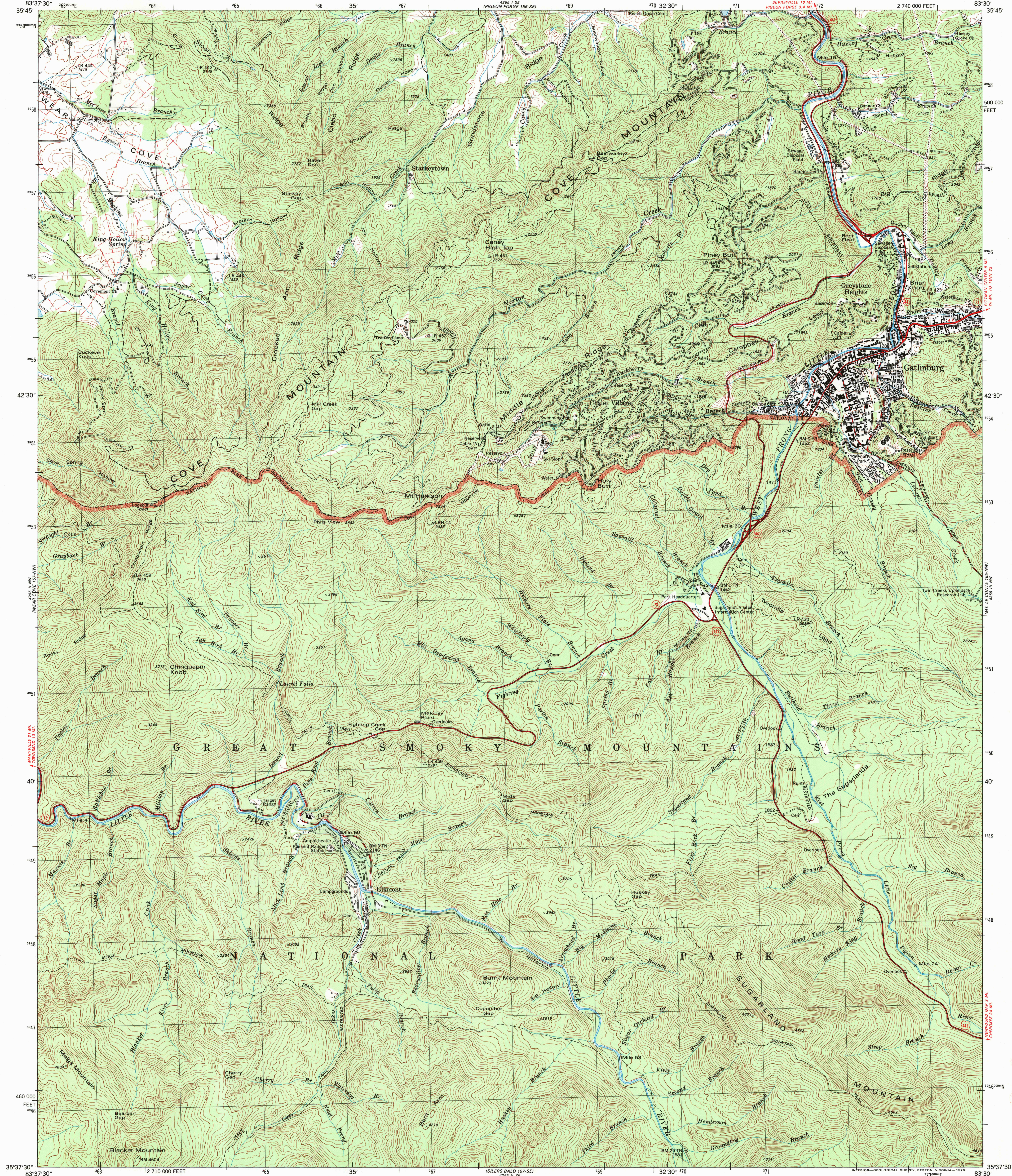


UNITED STATES
DEPARTMENT OF THE INTERIOR
GEOLOGICAL SURVEY

UNITED STATES
TENNESSEE VALLEY AUTHORITY
MAPPING SERVICES BRANCH

GATLINBURG QUADRANGLE
TENNESSEE-SEVIER COUNTY
7.5 MINUTE SERIES (TOPOGRAPHIC) 157-NE

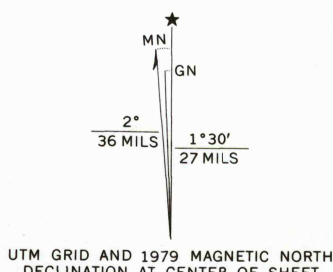


Mapped and edited by Tennessee Valley Authority
Published by the Geological Survey

Control by NOS/NOAA, USGS, and TVA

North half revised by TVA by photogrammetric
methods using aerial photographs taken 1974 and by
reference to TVA-USGS quadrangle dated 1941-42.
South half compiled by TVA by photogrammetric methods
using aerial photographs taken 1974. Map field checked
by TVA, 1978. Map edited 1979.

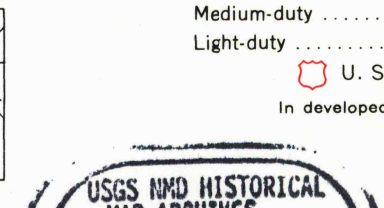
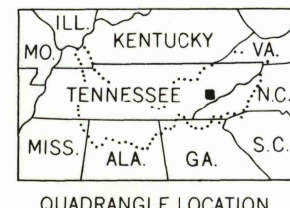
Polyconic projection, 1927 North American datum
10,000 foot grid based on Tennessee rectangular
coordinate system
1000 meter Universal Transverse Mercator Grid, Zone 17
Fine red dashed lines indicate selected fence and field lines
visible on aerial photographs. This information is unchecked



SCALE 1:24 000

CONTOUR INTERVAL 40 FEET
DASHED LINES REPRESENT HALF-INTERVAL CONTOURS
NATIONAL GEODETIC VERTICAL DATUM OF 1929

THIS MAP COMPLIES WITH NATIONAL MAP ACCURACY STANDARDS
FOR SALE BY U.S. GEOLOGICAL SURVEY, DENVER, COLORADO 80225, OR RESTON, VIRGINIA 22092
TENNESSEE DEPARTMENT OF CONSERVATION, DIVISION OF GEOLOGY, NASHVILLE, TENN. 37243
AND U.S. TENNESSEE VALLEY AUTHORITY, CHATTANOOGA, TENN. 37401
A FOLDER DESCRIBING TOPOGRAPHIC MAPS AND SYMBOLS IS AVAILABLE ON REQUEST



ROAD CLASSIFICATION
Heavy-duty Poor motor road
Medium-duty Wagon and jeep track
Light-duty Foot trail
In developed areas, only through roads are classified

GATLINBURG, TENN.
N3537.5-W8330.7.5

1979

AMS 4255 II NE-SERIES V841

