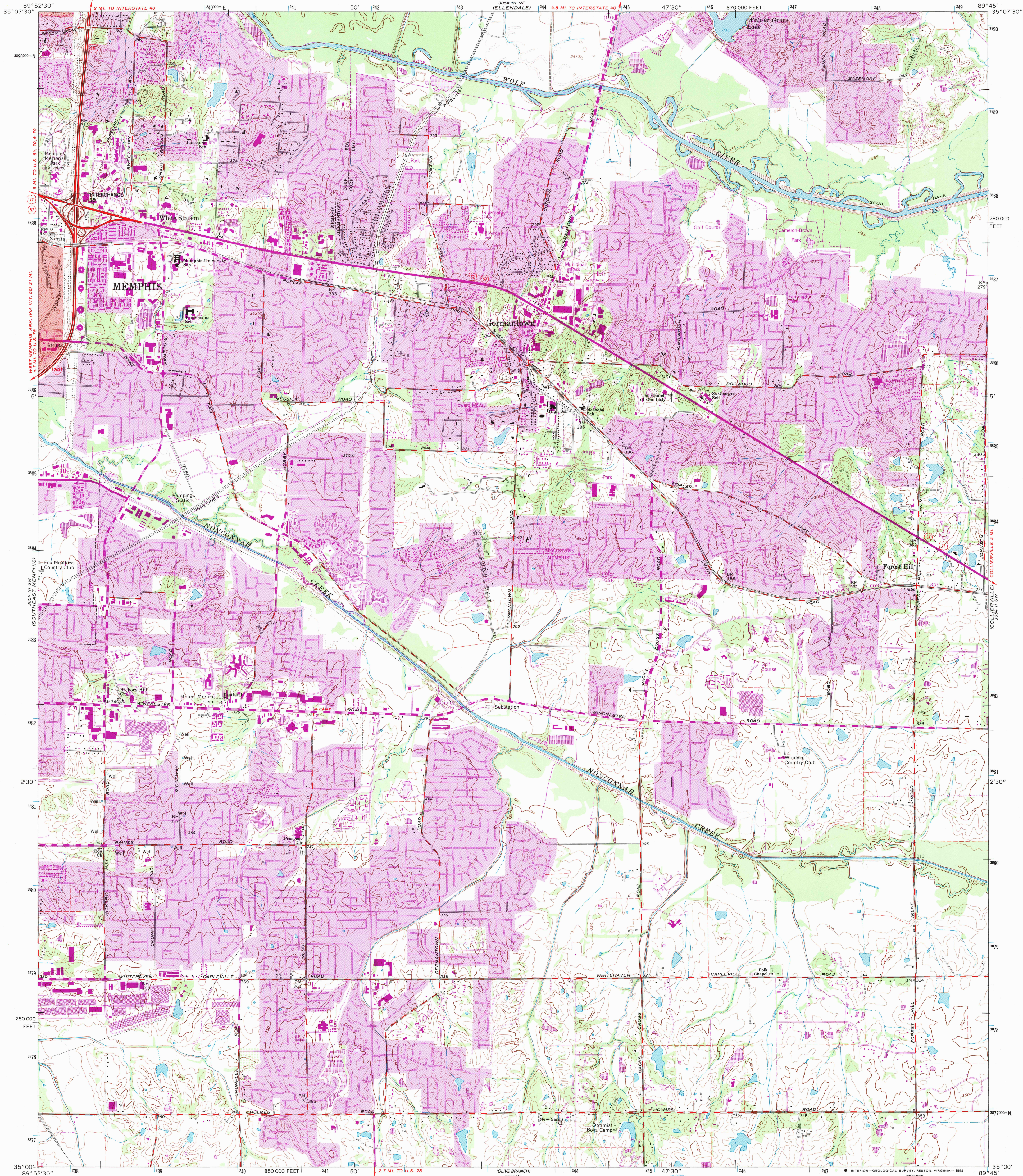
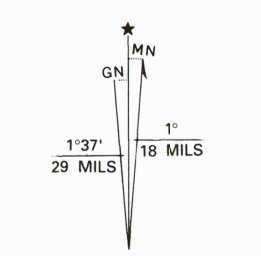


UNITED STATES
DEPARTMENT OF THE INTERIOR
GEOLOGICAL SURVEY

GERMANTOWN QUADRANGLE
TENNESSEE—SHELBY CO.
7.5 MINUTE SERIES (TOPOGRAPHIC)
SE/4 BARTLETT 15' QUADRANGLE



Produced by the United States Geological Survey
Control by USGS, NOS/NOAA and USCE
Topography by photogrammetric methods from aerial photographs
taken 1963. Field checked 1965
Projection and 10,000-foot grid ticks: Tennessee coordinate
system, (Lambert conformal conic)
1000-meter Universal Transverse Mercator grid ticks, zone 16, shown in blue
1927 North American Datum (NAD 27)
North American Datum of 1983 (NAD 83) is shown by dashed corner ticks
The values of the shift between NAD 27 and NAD 83 for 7.5-minute
intersections are given in USGS Bulletin 11875
Red tint indicates areas in which only landmark buildings are shown
Fine red dashed lines indicate selected fence and field lines where
generally visible on aerial photographs. This information is unchecked
Purple tint indicates extension of urban areas



THIS MAP COMPLIES WITH NATIONAL MAP ACCURACY STANDARDS
FOR SALE BY U.S. GEOLOGICAL SURVEY, DENVER, COLORADO 80225, OR RESTON, VIRGINIA 22092
AND TENNESSEE DEPARTMENT OF CONSERVATION, DIVISION OF GEOLOGY, NASHVILLE, TENNESSEE 37243
A FOLDER DESCRIBING TOPOGRAPHIC MAPS AND SYMBOLS IS AVAILABLE ON REQUEST

Revisions shown in purple compiled from aerial
photographs taken 1990 and other sources. This
information not field checked. Map edited 1993
Information shown in purple may not meet USGS content
standards and may conflict with previously mapped contours

ROAD CLASSIFICATION
Heavy-duty ——— Light-duty ———
Medium-duty ——— Unimproved dirt ———
Interstate Route U.S. Route State Route

GERMANTOWN, TENN.
SE/4 BARTLETT 15' QUADRANGLE
35089-A7-TF-024
1965
REVISED 1993
DMA 3054 III SE—SERIES V841