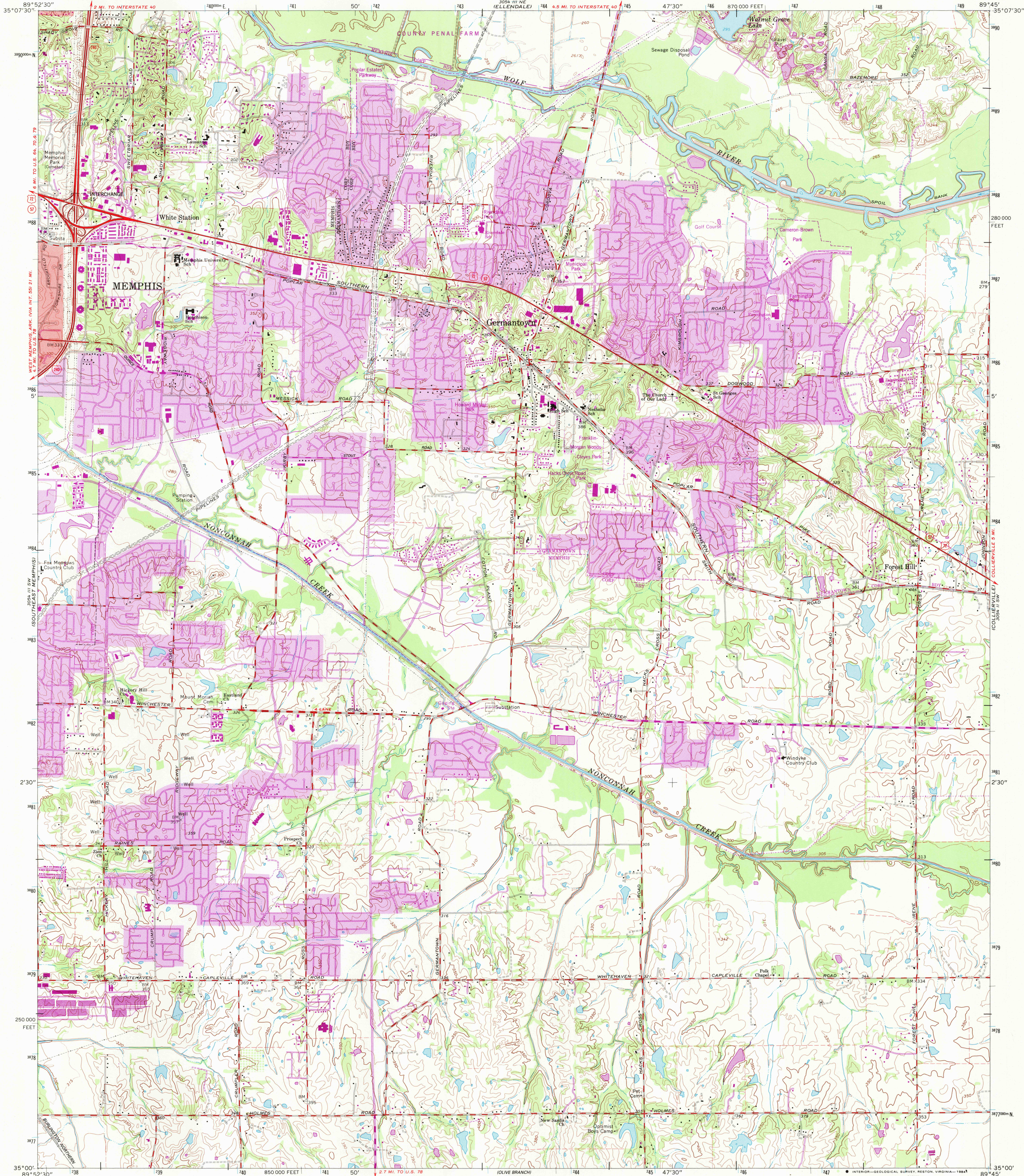
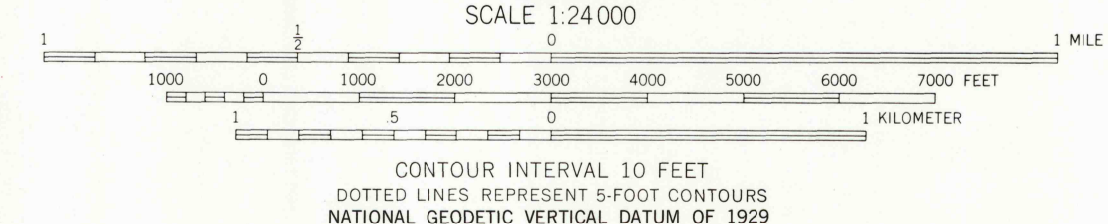
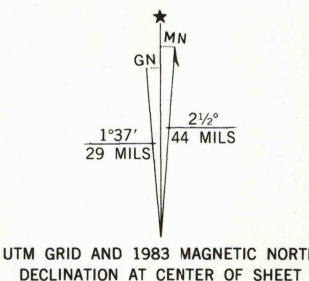


UNITED STATES
DEPARTMENT OF THE INTERIOR
GEOLOGICAL SURVEY

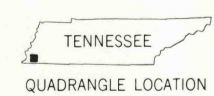
GERMANTOWN QUADRANGLE
TENNESSEE-SHELBY CO.
7.5 MINUTE SERIES (TOPOGRAPHIC)
SE/4 BARTLETT 15' QUADRANGLE



Mapped, edited, and published by the Geological Survey
Control by USGS, NOS/NOAA, and USCE
Topography by photogrammetric methods from aerial
photographs taken 1963. Field checked 1965
Polyconic projection. 10,000-foot grid ticks based on Tennessee
coordinate system.
1000-meter Universal Transverse Mercator grid ticks, zone 16, shown in blue
1927 North American Datum
To place on the predicted North American Datum 1983
move the projection lines 7 meters south and
7 meters east as shown by dashed corner ticks
Fine red dashed lines indicate selected fence and field lines where
generally visible on aerial photographs. This information is unchecked
Red tint indicates areas in which only landmark buildings are shown



ROAD CLASSIFICATION
Heavy-duty ——— Light-duty ———
Medium-duty ——— Unimproved dirt ———
Interstate Route ——— U.S. Route ——— State Route ———



GERMANTOWN, TENN.
SE/4 BARTLETT 15' QUADRANGLE
35089-A7-TF-024
1965
PHOTOREVISED 1983
DMA 3054 III SE-SERIES V841

THIS MAP COMPLIES WITH NATIONAL MAP ACCURACY STANDARDS
FOR SALE BY U.S. GEOLOGICAL SURVEY, RESTON, VIRGINIA 22092.
TENNESSEE DEPARTMENT OF CONSERVATION, DIVISION OF GEOLOGY, NASHVILLE, TENN. 37219
A FOLDER DESCRIBING TOPOGRAPHIC MAPS AND SYMBOLS IS AVAILABLE ON REQUEST

Revisions shown in purple and woodland compiled from aerial
photographs taken 1980 and other sources. This information
is unchecked. Map edited 1983
Purple tint indicates extensions of urban areas

RETURN TO:
USGS AND HISTORICAL MAP ARCHIVES