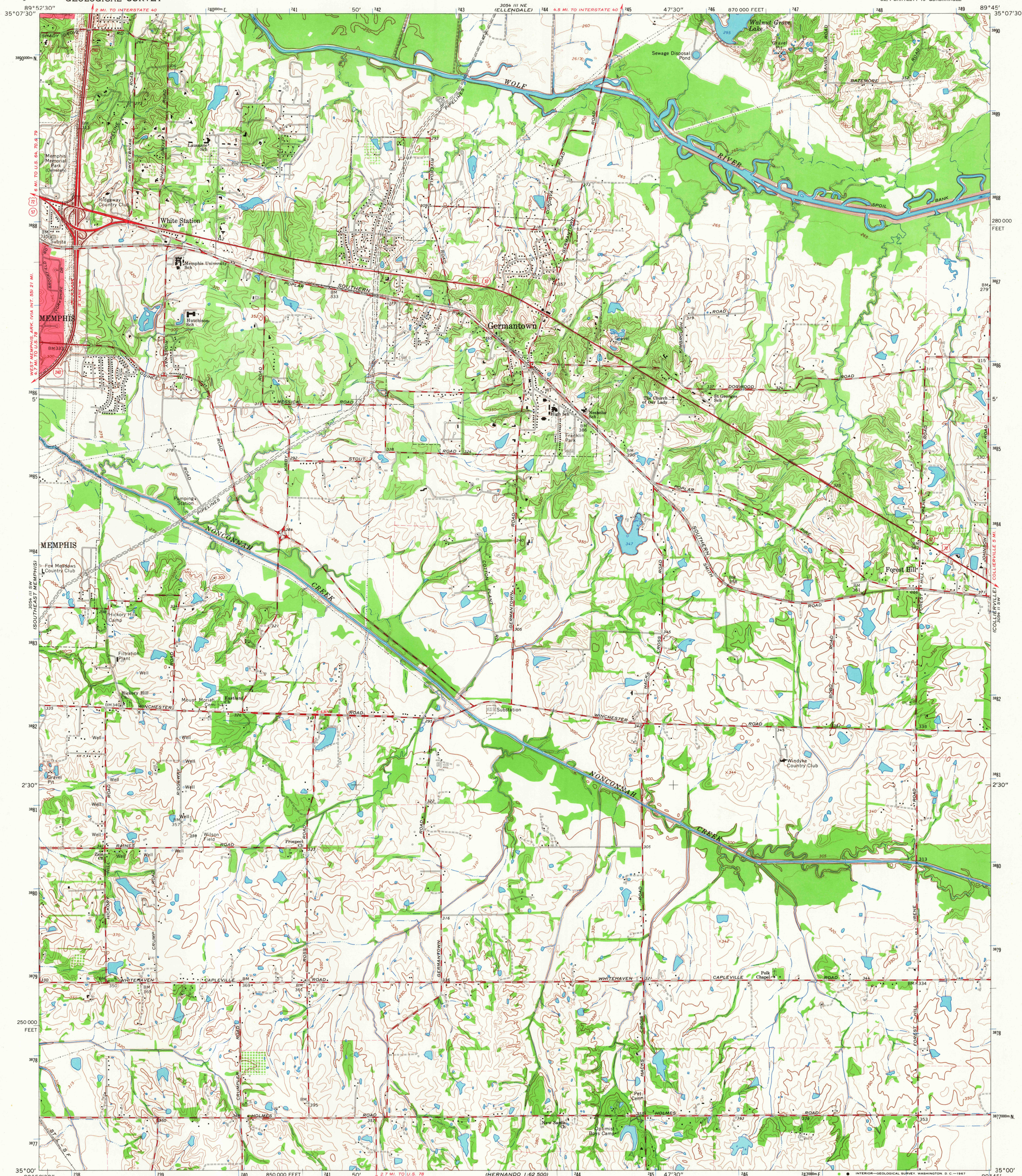


NORTH-NEARBY

UNITED STATES  
DEPARTMENT OF THE INTERIOR  
GEOLOGICAL SURVEY

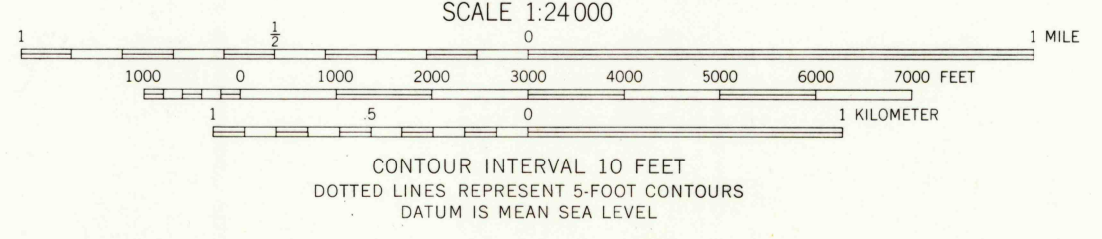
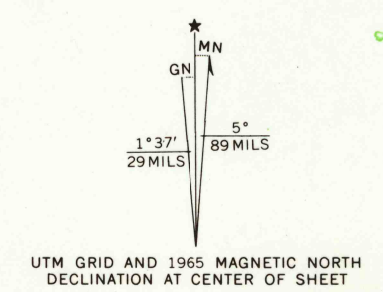
GERMANTOWN QUADRANGLE  
TENNESSEE-SHELBY CO.  
7.5 MINUTE SERIES (TOPOGRAPHIC)  
SE/4 BARTLETT 15' QUADRANGLE

35° 07' 30" N  
89° 45' 30" W



HERNANDO 1:62,500

Mapped, edited, and published by the Geological Survey  
Control by USGS, USC&GS, and USCE  
Topography by photogrammetric methods from aerial photographs  
taken 1963. Field checked 1965  
Polyconic projection. 1927 North American datum  
10,000-foot grid based on Tennessee coordinate system  
1000-meter Universal Transverse Mercator grid ticks,  
zone 16, shown in blue  
Fine red dashed lines indicate selected fence and field lines where  
generally visible on aerial photographs. This information is unchecked  
Red tint indicates areas in which only landmark buildings are shown



THIS MAP COMPLIES WITH NATIONAL MAP ACCURACY STANDARDS  
FOR SALE BY U.S. GEOLOGICAL SURVEY, WASHINGTON, D.C. 20242  
AND TENNESSEE DIVISION OF GEOLOGY, NASHVILLE, TENN. 37219  
A FOLDER DESCRIBING TOPOGRAPHIC MAPS AND SYMBOLS IS AVAILABLE ON REQUEST

U.S.G.S.  
FILE COPY  
TOPOGRAPHIC DIVISION

ROAD CLASSIFICATION

Heavy-duty	Light-duty
Medium-duty	Unimproved dirt
Interstate Route	U.S. Route
	State Route

GERMANTOWN, TENN.  
SE/4 BARTLETT 15' QUADRANGLE  
N3500-W8945/7.5

OCT 17 1967

1965  
AMS 3054 III SE-SERIES V841