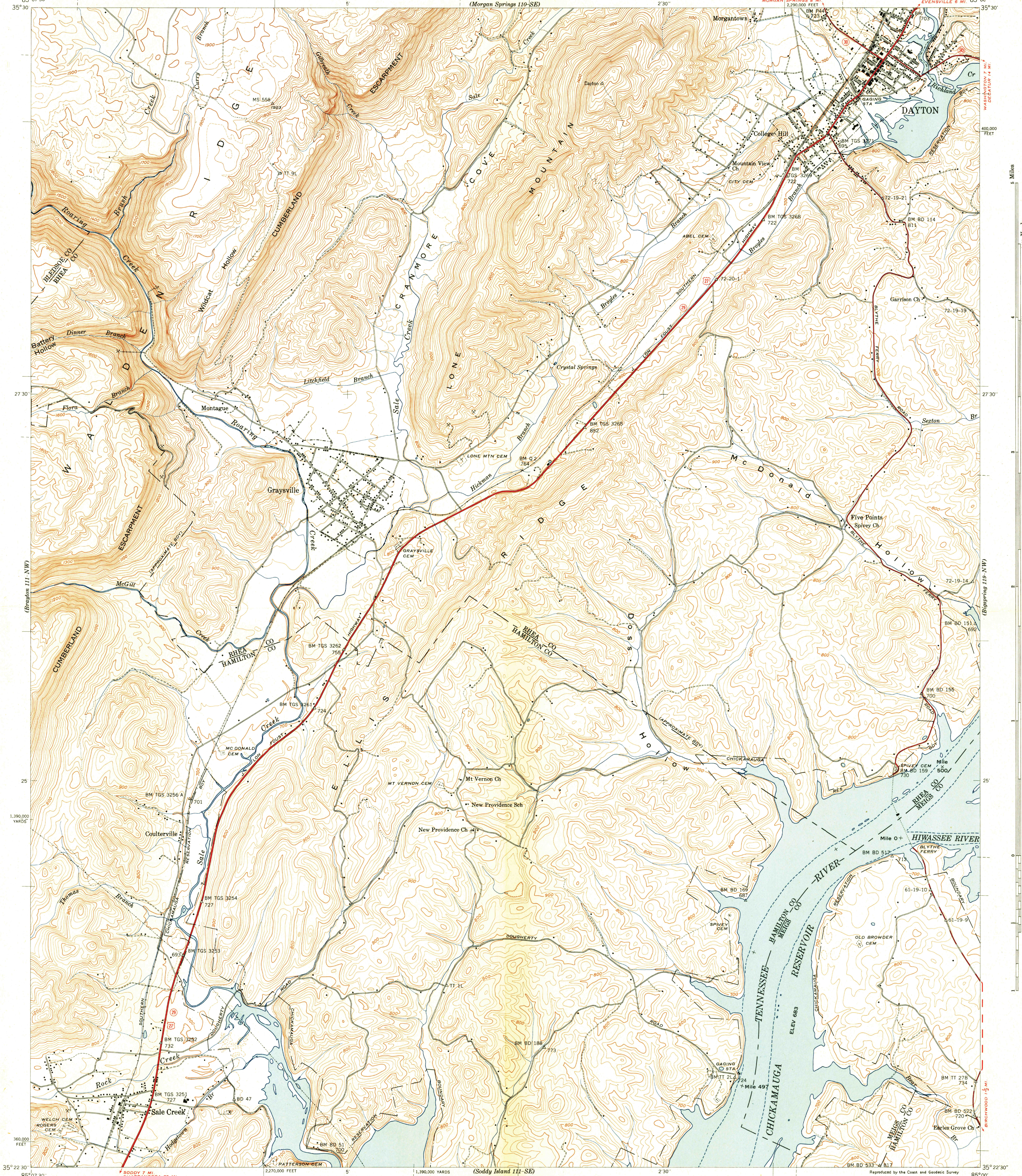


U.S.G.S.  
FILE COPY  
Inspection and Editing.

UNITED STATES  
DEPARTMENT OF THE INTERIOR  
GEOLOGICAL SURVEY

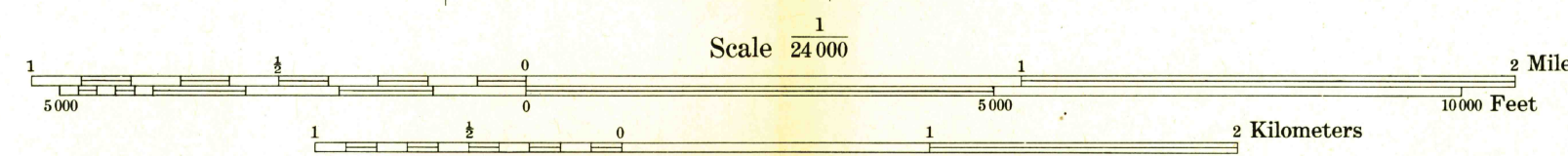
UNITED STATES  
TENNESSEE VALLEY AUTHORITY  
MAPS AND SURVEYS DIVISION

TENNESSEE  
GRAYSVILLE QUADRANGLE  
111-NE



Control by USC&GS, USGS, and TVA  
Topography by Geological Survey from aerial  
photographs by stereophotogrammetric methods  
Field examination by Tennessee Valley Authority, 1942  
Maps distributed by the Geological Survey

TRUE NORTH  
MAGNETIC NORTH  
APPROXIMATE MEAN  
DECLINATION, 1943



Contour interval 20 feet  
Occasional 10 foot contours shown by broken lines  
Datum is mean sea level

USGS  
HISTORICAL FILE  
TOPOGRAPHIC DIVISION

U.S.G.S.  
FILE COPY  
Inspection and Editing.

Polyconic projection, 1927 North American datum  
10,000 foot grid based on Tennessee  
rectangular coordinate system  
5,000 foot grid based on U. S. zone system, C

ROUTES USUALLY TRAVELED  
HARD IMPERVIOUS SURFACES  
OTHER SURFACE IMPROVEMENTS  
U.S. ROUTE STATE ROUTE

GRAYSVILLE, TENN.  
111-NE  
Edition of 1943  
N 5522.5-W 8500/7.5

