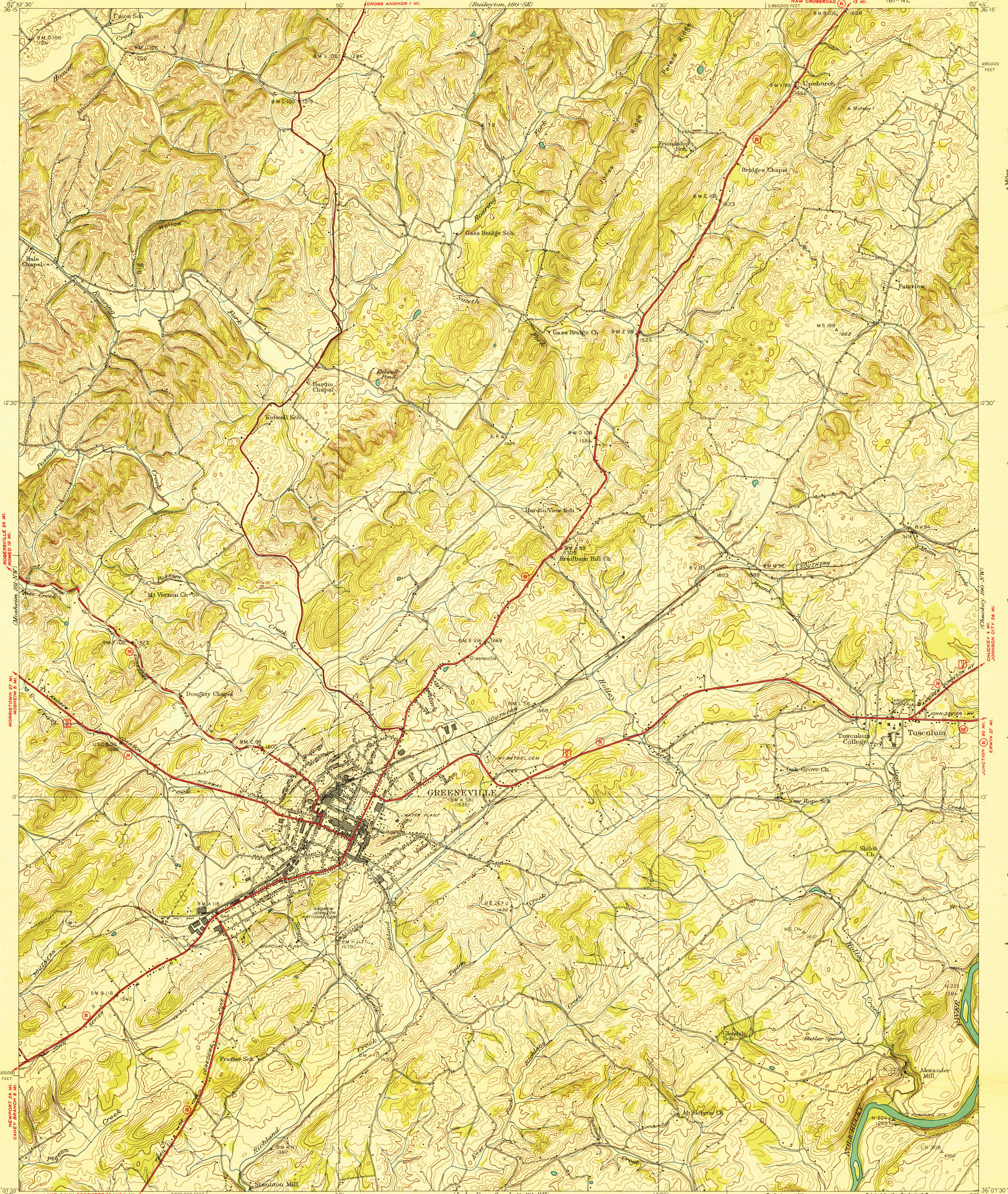


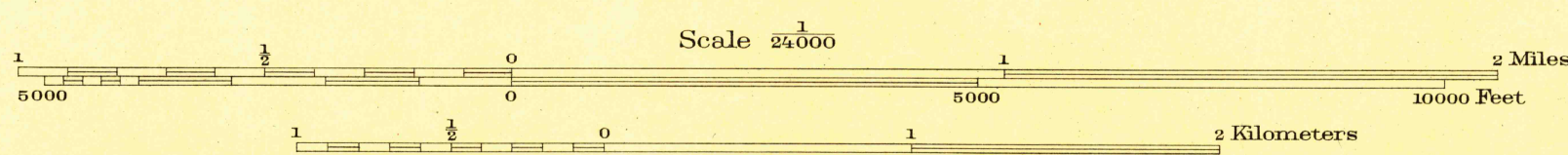
FILE COPY
Inspection and Editing



Control by USC&GS, USGS, and TVA
Topography by Geological Survey from aerial
photographs by stereophotogrammetric methods.
Field examination by Tennessee Valley Authority—1939

Maps distributed by the Geological Survey

APPROXIMATE MEAN
DECLINATION, 1939



USGS
HISTORICAL FILE
TOPOGRAPHIC DIVISION

Polyconic projection, 1927 North American datum
10,000 foot grid based on Tennessee
rectangular coordinate system

ROUTES USUALLY TRAVELED
HARD IMPROVED SURFACES
OTHER SURFACE IMPROVEMENTS
1939 U. S. ROUTE 3 STATE ROUTE

GREENEVILLE, TENN.
181-NE
Edition of 1940
N 3607.5-W 8245/7.5

FILE COPY
Inspection and Editing

DR-12

AUG 27 1940