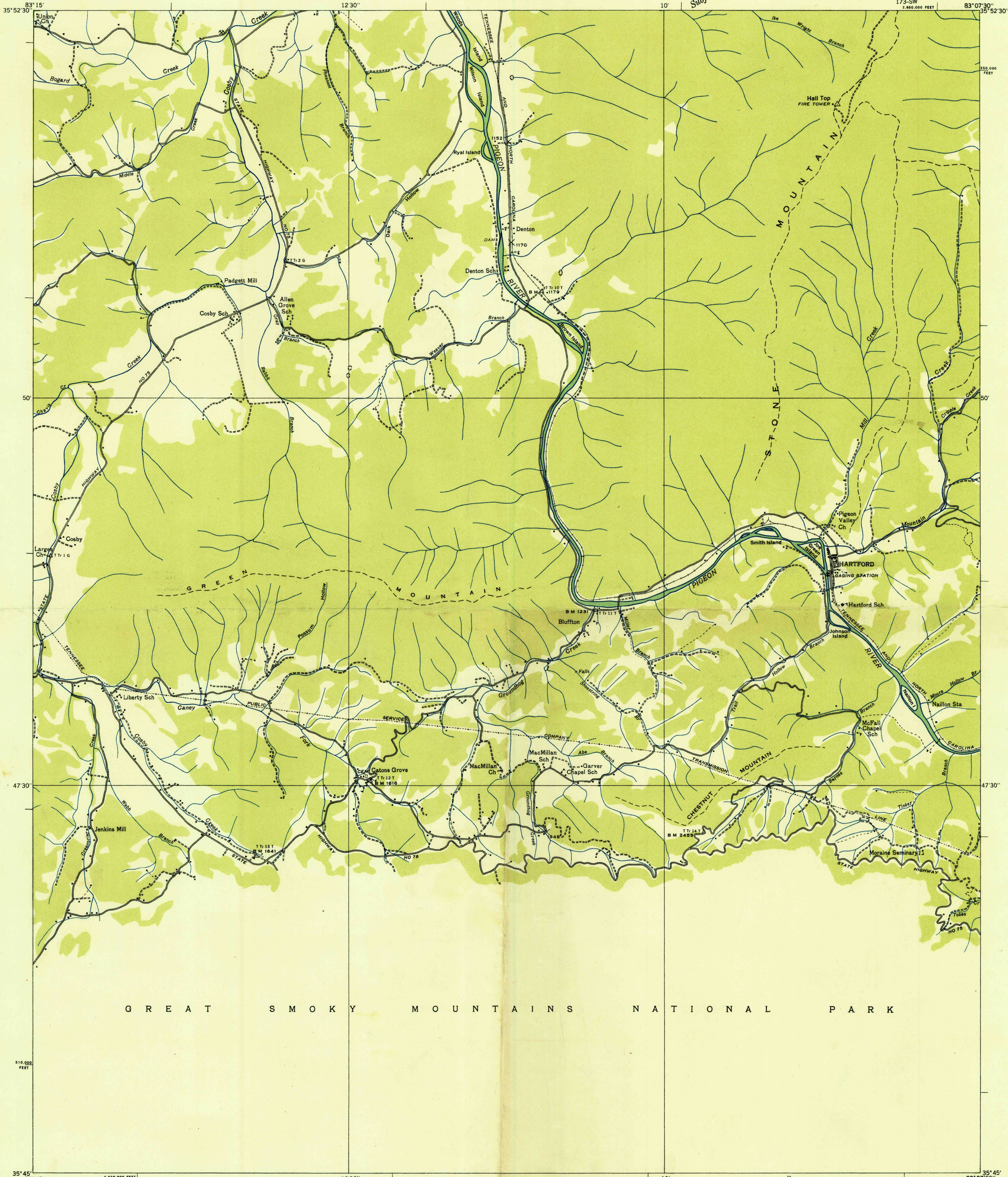


DEPARTMENT OF THE INTERIOR
U. S. GEOLOGICAL SURVEY

TENNESSEE VALLEY AUTHORITY
ARTHUR E. MORGAN, CHAIRMAN AND CHIEF ENGINEER
CARL A. BOCK, ASSISTANT CHIEF ENGINEER

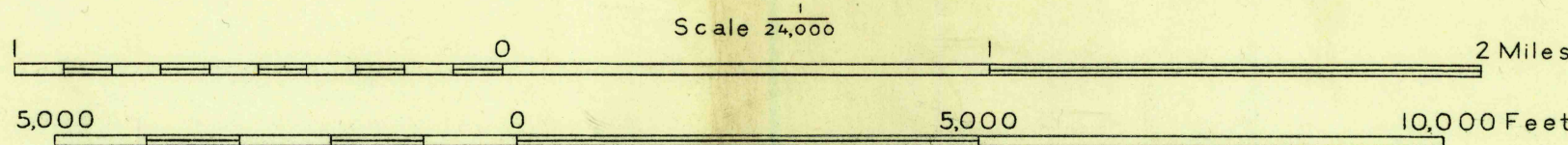
TENNESSEE-NORTH CAROLINA
(COCKE CO. TENNESSEE)
HARTFORD QUADRANGLE
173-SW

Advance sheet
Subject to correction



G R E A T S M O K Y M O U N T A I N S N A T I O N A L P A R K

Albert Pike, Division Engineer
Compiled by U. S. Geological Survey from aerial photographs
Control by U. S. Geological Survey
Field examination in 1935



Datum is mean sea level

USGS
HISTORICAL FILE
TOPOGRAPHIC DIVISION

Polyconic projection. 1927 North American datum
10,000-foot grid based on Tennessee
rectangular coordinate system

Ridge line
Trail
Sinks

HARTFORD, TENN.-N. C.
173-SW