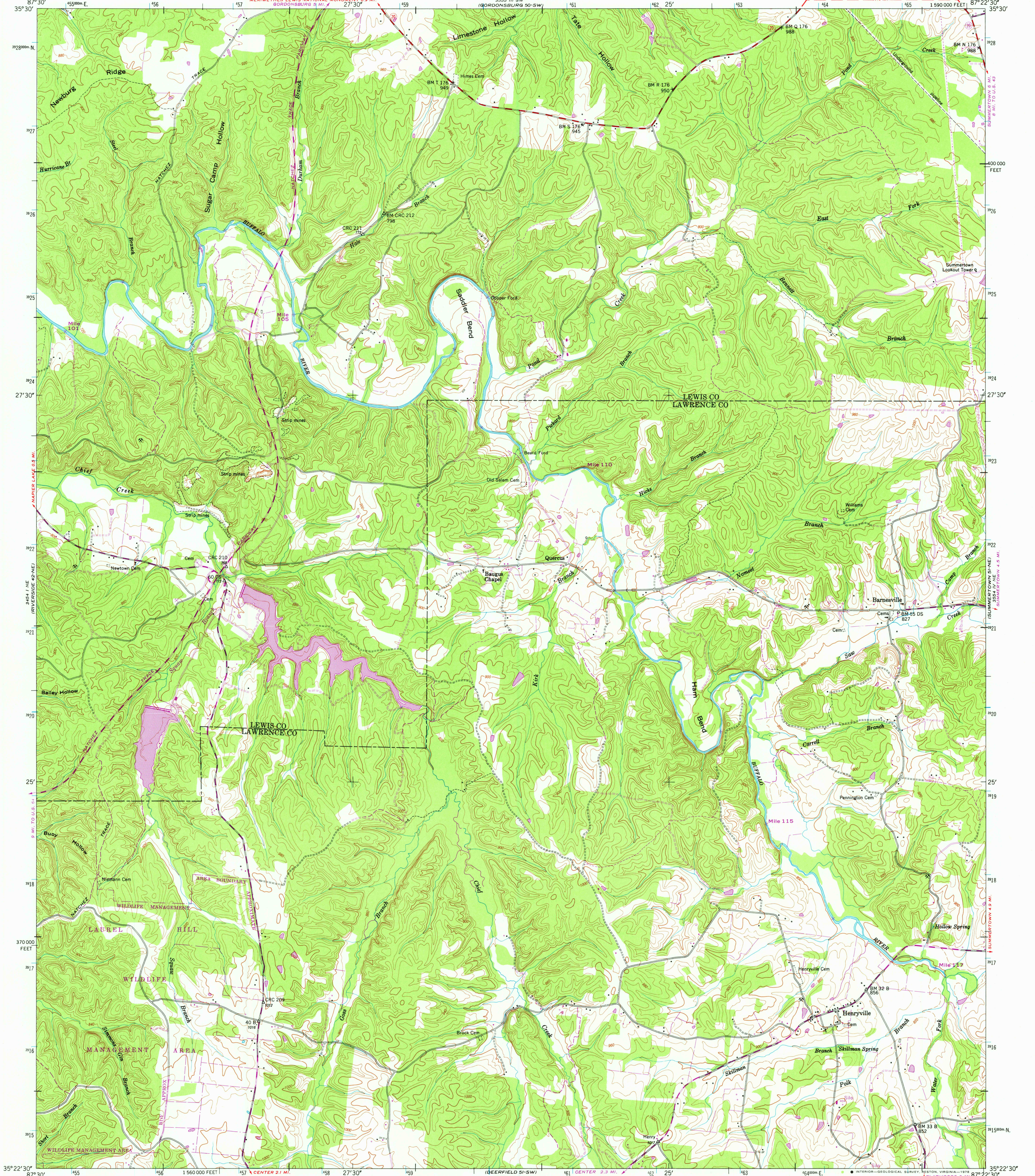


UNITED STATES
DEPARTMENT OF THE INTERIOR
GEOLOGICAL SURVEY

UNITED STATES
TENNESSEE VALLEY AUTHORITY
MAPPING SERVICES BRANCH

HENRYVILLE QUADRANGLE
TENNESSEE
7.5 MINUTE SERIES (TOPOGRAPHIC) 51-NW



Mapped and edited by Tennessee Valley Authority
Published by the Geological Survey

Control by NOS/NOAA, USGS, and TVA

Topography by photogrammetric methods using aerial photographs
taken 1947 and 1950. Map field checked by TVA, 1951

Polyconic projection, 1927 North American datum
10,000 foot grid based on Tennessee rectangular
coordinate system
1000 meter Universal Transverse Mercator Grid ticks,
Zone 16, shown in blue

Revisions shown in purple and recompilation of woodland
areas compiled by the Tennessee Valley Authority from aerial
photographs taken 1976. This information not field checked

UTM GRID AND 1976 MAGNETIC NORTH
DECLINATION AT CENTER OF SHEET
0°15' 27W
11° 27W
4 MILES
Fine purple dashed lines indicate selected
fence and field lines visible on aerial photog-
raphy. This information is unchecked

SCALE 1:24 000
CONTOUR INTERVAL 20 FEET
DASHED LINES REPRESENT HALF-INTERVAL CONTOURS
NATIONAL GEODETIC VERTICAL DATUM OF 1929
THIS MAP COMPLIES WITH NATIONAL MAP ACCURACY STANDARDS
FOR SALE BY U.S. GEOLOGICAL SURVEY, RESTON, VIRGINIA 22092
TENNESSEE DIVISION OF GEOLOGY, NASHVILLE, TENN. 37219,
U.S. TENNESSEE VALLEY AUTHORITY, CHATTANOOGA, TENN. 37401 OR KNOXVILLE, TENN. 37902.
A FOLDER DESCRIBING TOPOGRAPHIC MAPS AND SYMBOLS IS AVAILABLE ON REQUEST



ROAD CLASSIFICATION
Heavy-duty Poor motor road
Medium-duty Wagon and jeep track
Light-duty Foot trail
U. S. Route State Route
In developed areas, only through roads are classified

USGS
Historical File
Topographic Division

HENRYVILLE, TENN.
N3522.5-W8722.5/7.5
1951
PHOTOREVISED 1976
AMS 3554 IV NW-SERIES 984

JUL 11 1978
280