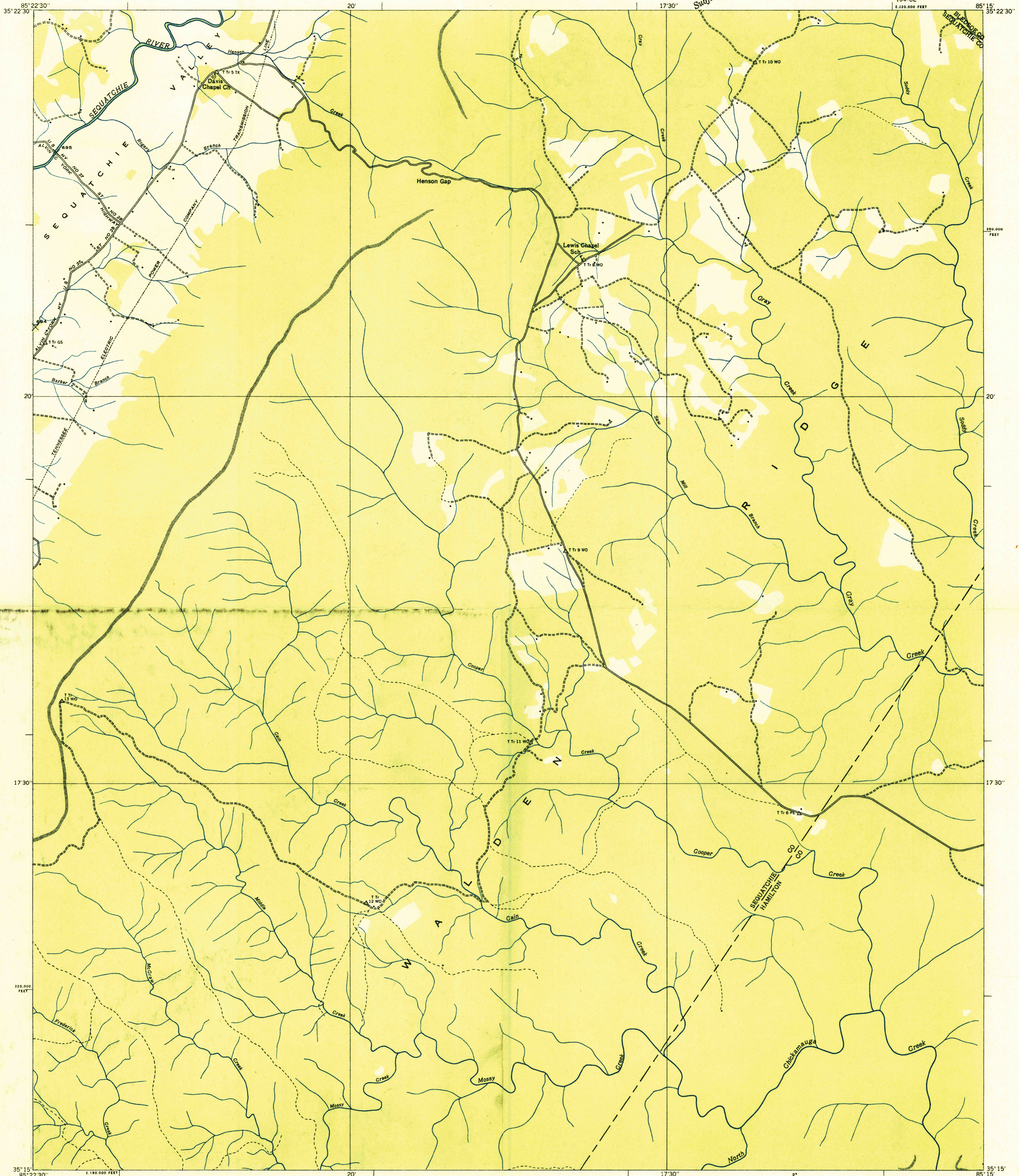
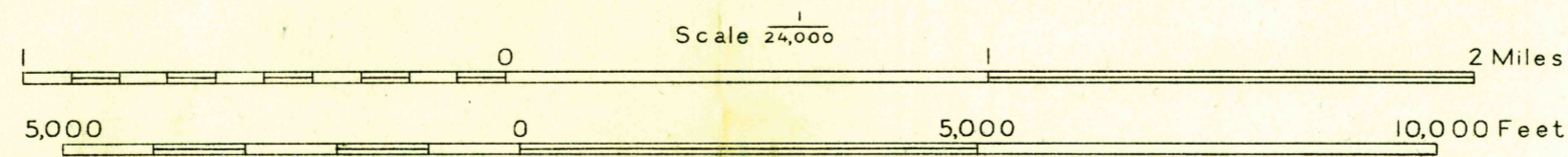


Advance sheet  
Subject to correction



Albert Pike, Division Engineer  
Compiled by U. S. Geological Survey from aerial photographs  
Control by U. S. Geological Survey and Corps of Engineers, U. S. Army  
Field examination in 1936



TRUE NORTH  
MAGNETIC NORTH  
APPROXIMATE MEAN  
DECLINATION, 1936

Polyconic projection, 1927 North American datum  
10,000 foot grid based on Tennessee  
rectangular coordinate system

Trail  
Rim Rock  
HENSON GAP, TENN.  
104-SE

USGS  
HISTORICAL FILE  
TOPOGRAPHIC DIVISION