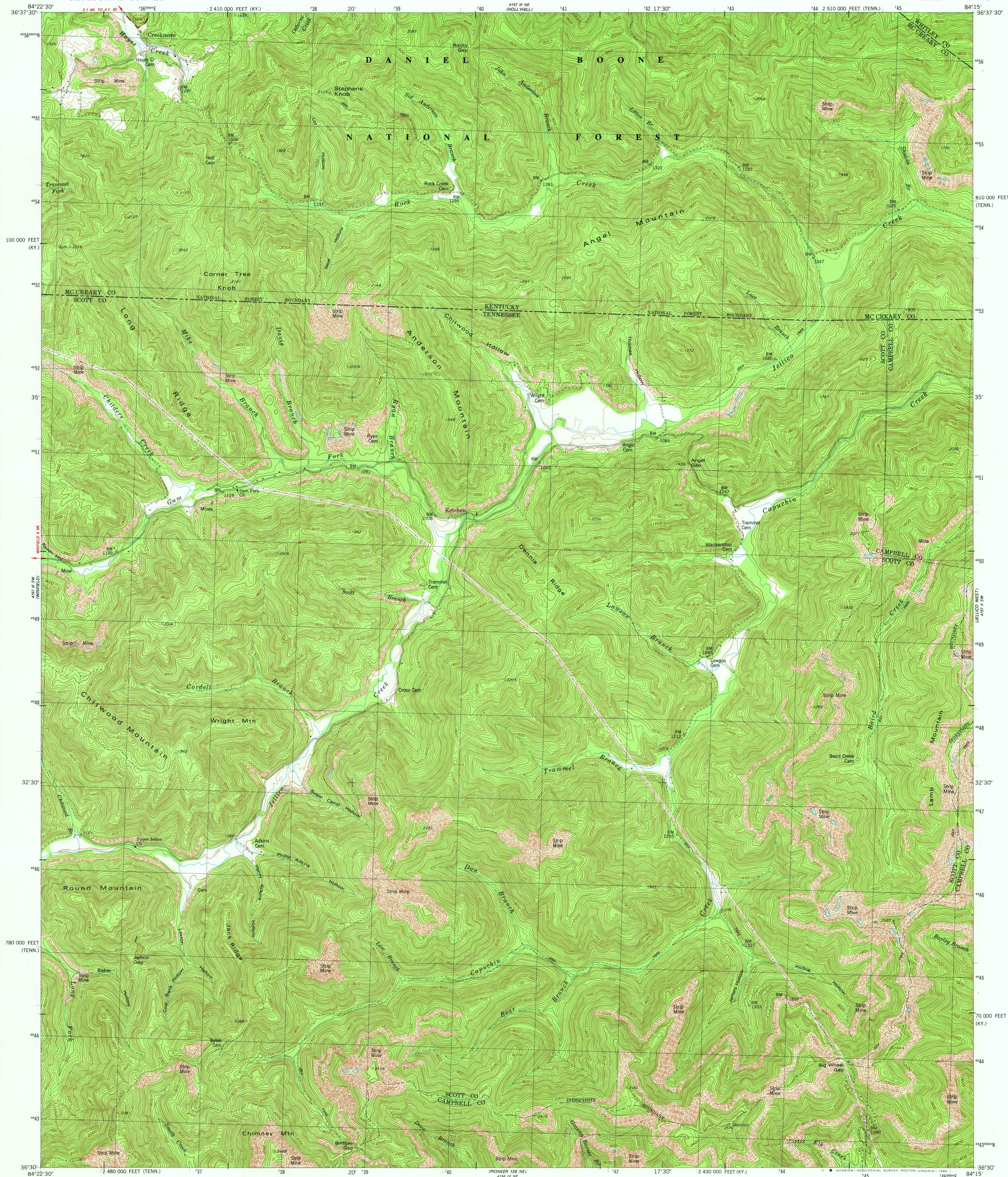
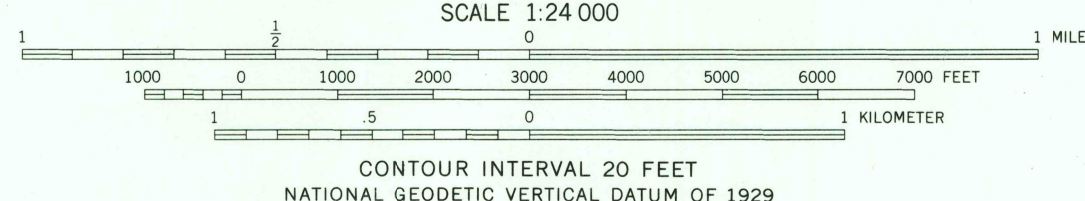
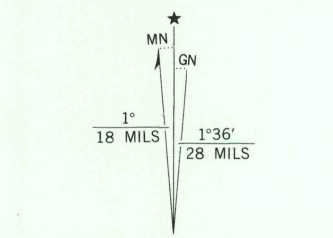


UNITED STATES
DEPARTMENT OF THE INTERIOR
GEOLOGICAL SURVEY

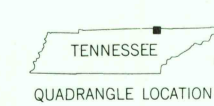
KETCHEN QUADRANGLE
TENNESSEE-KENTUCKY
7.5 MINUTE SERIES (TOPOGRAPHIC)
SE/4 STEARNS 15' QUADRANGLE



Mapped, edited, and published by the Geological Survey
in cooperation with State of Tennessee agencies and
Kentucky Geological Survey
Revised in cooperation with Kentucky Geological Survey
Control by USGS and NOS/NOAA
Topography by photogrammetric methods from aerial photographs
taken 1951. Field checked 1953. Revised from aerial photographs
taken 1975. Field checked 1977. Map edited 1980
Polyconic projection. 10,000-foot grid ticks based on Tennessee
coordinate system and Kentucky coordinate system, south zone
1000-meter Universal Transverse Mercator grid, zone 16
1927 North American Datum
To place on the predicted North American Datum 1983
move the projection lines 6 meters south and
6 meters west as shown by dashed corner ticks
There may be private inholdings within the boundaries of
the National or State reservations shown on this map
Dashed contours in strip mine areas not revised



THIS MAP COMPLIES WITH NATIONAL MAP ACCURACY STANDARDS
FOR SALE BY U. S. GEOLOGICAL SURVEY, RESTON, VIRGINIA 22092
TENNESSEE DIVISION OF GEOLOGY, NASHVILLE, TENN. 37219
KENTUCKY GEOLOGICAL SURVEY, LEXINGTON, KENTUCKY 40506
AND KENTUCKY DEPARTMENT OF COMMERCE, FRANKFORT, KENTUCKY 40601
A FOLDER DESCRIBING TOPOGRAPHIC MAPS AND SYMBOLS IS AVAILABLE ON REQUEST



ROAD CLASSIFICATION
Primary highway, hard surface
Secondary highway, hard surface
Unimproved road
Interstate Route
U. S. Route
State Route

KETCHEN, TENN.-KY.
SE/4 STEARNS 15' QUADRANGLE
N3630-W8415/7.5
1980
DMA 4157 III SE-SERIES V841

USGS
Historical File
Topographic Division

2006
FEB 3 1981