

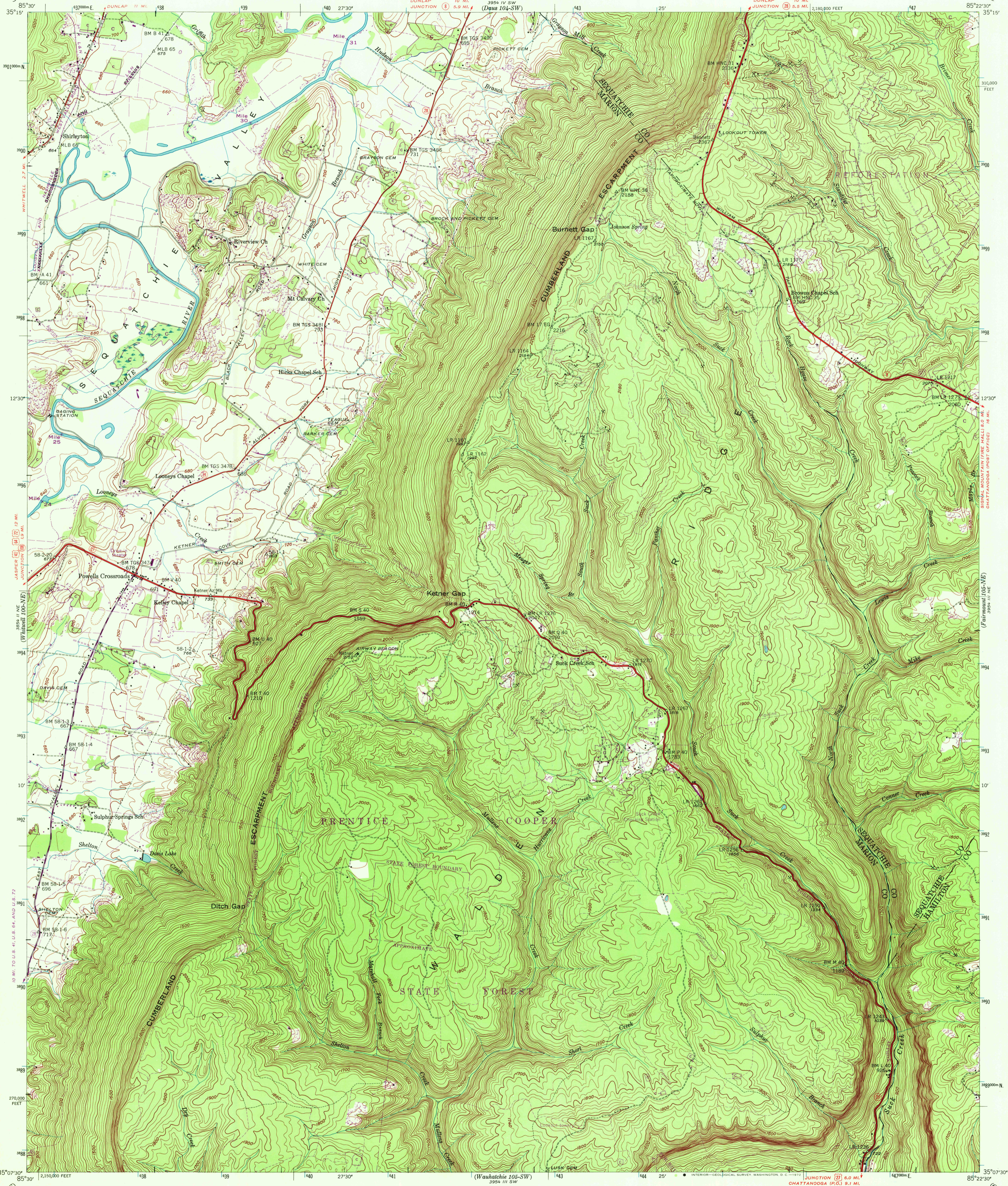
(Palmer 104-SE)

UNITED STATES DEPARTMENT OF THE INTERIOR GEOLOGICAL SURVEY

UNITED STATES TENNESSEE VALLEY AUTHORITY MAPS AND SURVEYS DIVISION

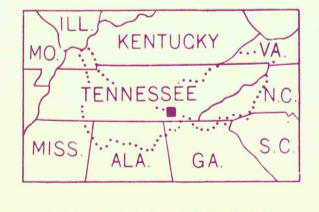
TENNESSEE KETNER GAP QUADRANGLE 105-NW

(Hessner Gap 104-SE)

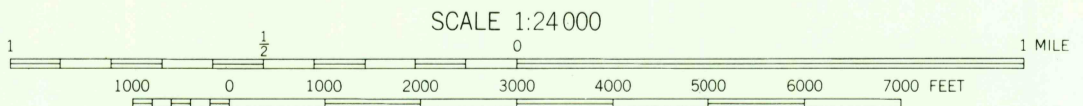
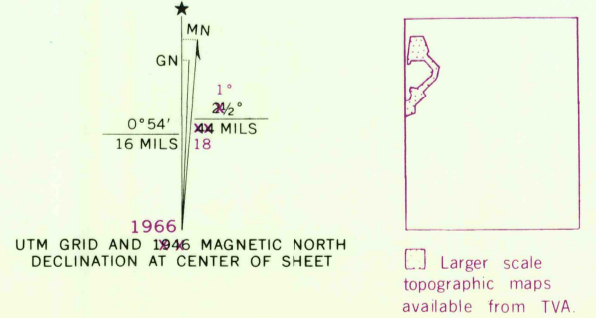


Control by USC&GS, USGS, TVA, and WPA. Topography by Geological Survey from aerial photographs by stereophotogrammetric methods. Field examination by Tennessee Valley Authority, 1943.

Revision (purple) compiled by TVA, September 1966 from March 1965 photography.



QUADRANGLE LOCATION



Contour interval 20 feet. Datum is mean sea level.

FOR SALE BY U. S. GEOLOGICAL SURVEY, WASHINGTON, D. C. 20242. U. S. TENNESSEE VALLEY AUTHORITY, CHATTANOOGA OR KNOXVILLE, TENN., AND TENNESSEE DIVISION OF GEOLOGY, NASHVILLE, TENNESSEE. A FOLDER DESCRIBING TOPOGRAPHIC MAPS AND SYMBOLS IS AVAILABLE ON REQUEST.

LEGEND table listing symbols for various features: Fence and field line, Stream, Pond and dam, Woodland, Clearing, Strip mine, Mine or quarry, General deletion, Heavy-duty road, Medium-duty road, Light-duty road, Poor motor road, Wagon and jeep track, Foot trail.

ROUTES USUALLY TRAVELED. HARD IMPERVIOUS SURFACES. OTHER SURFACE IMPROVEMENTS. U.S. ROUTE. STATE ROUTE.

USGS HISTORICAL FILE TOPOGRAPHIC DIVISION. KETNER GAP, TENN. 105-NW. N3507.5-W8522.5/7.5. 1943.

AMS 3954 III NW-SERIES V841

105-NW

MAR 24 1972

4375