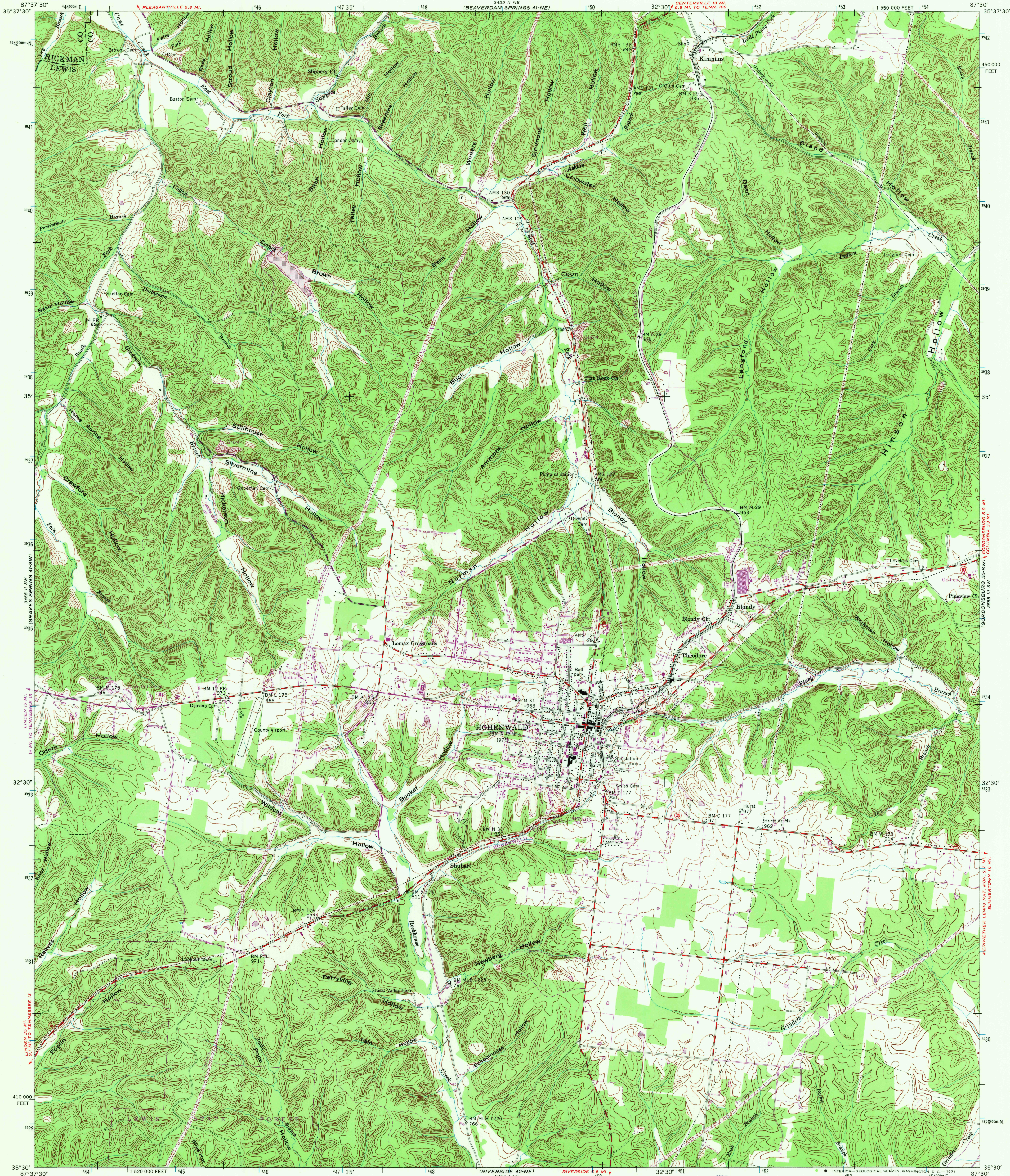


UNITED STATES  
DEPARTMENT OF THE INTERIOR  
GEOLOGICAL SURVEY

UNITED STATES  
TENNESSEE VALLEY AUTHORITY  
MAPS AND SURVEYS BRANCH

KIMMINS QUADRANGLE  
TENNESSEE  
7.5 MINUTE SERIES (TOPOGRAPHIC) 41-SE

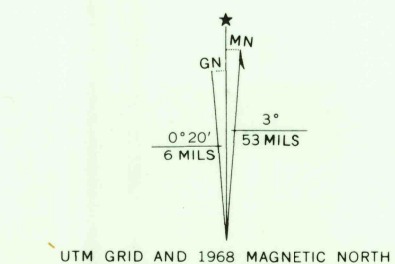


Mapped and edited by Tennessee Valley Authority  
Published by the Geological Survey  
Control by US&GS, USGS, and TVA

Topography by USGS and TVA by photogrammetric methods  
using aerial photographs taken 1946 and 1947.  
Map field checked by TVA, 1951

Polyconic projection. 1927 North American datum  
10,000 foot grid based on Tennessee rectangular  
coordinate system  
1000 meter Universal Transverse Mercator Grid ticks,  
Zone 16, shown in blue

Revisions shown in purple and recompilation of woodland  
areas compiled by the Tennessee Valley Authority from aerial  
photographs taken 1968. This information not field checked



UTM GRID AND 1968 MAGNETIC NORTH  
DECLINATION AT CENTER OF SHEET

Fine purple dashed lines indicate selected  
fence and field lines visible on aerial photo-  
graphs. This information is unchecked

SCALE 1:24,000

CONTOUR INTERVAL 20 FEET  
DASHED LINES REPRESENT HALF-INTERVAL CONTOURS  
DATUM IS MEAN SEA LEVEL

THIS MAP COMPLIES WITH NATIONAL MAP ACCURACY STANDARDS

FOR SALE BY U.S. GEOLOGICAL SURVEY, WASHINGTON, D.C. 20242,  
TENNESSEE DIVISION OF GEOLOGY, NASHVILLE, TENN. 37219.  
U.S. TENNESSEE VALLEY AUTHORITY, CHATTANOOGA, TENN. 37401 OR KNOXVILLE, TENN. 37902.  
A FOLDER DESCRIBING TOPOGRAPHIC MAPS AND SYMBOLS IS AVAILABLE ON REQUEST

USGS  
HISTORICAL FILE  
TOPOGRAPHIC DIVISION



QUADRANGLE LOCATION

ROAD CLASSIFICATION (TVA 41-SE)  
In developed areas, only through roads are classified  
HARD-SURFACE ALL WEATHER ROADS DRY WEATHER ROADS  
Heavy-duty... **2 LANE 16 LANE** Improved dirt...  
Medium-duty... **2 LANE 16 LANE** Unimproved dirt...  
Wagon and jeep track... **2 LANE 16 LANE** Foot trail...  
U.S. Route State Route

U.S.G.S.  
FILE COPY  
TOPOGRAPHIC DIVISION

KIMMINS, TENN.  
N3530-W8730/7.5

1951  
PHOTOREVISED 1968  
AMS 3455 11 SW-SERIES V841

JAN 26 1971