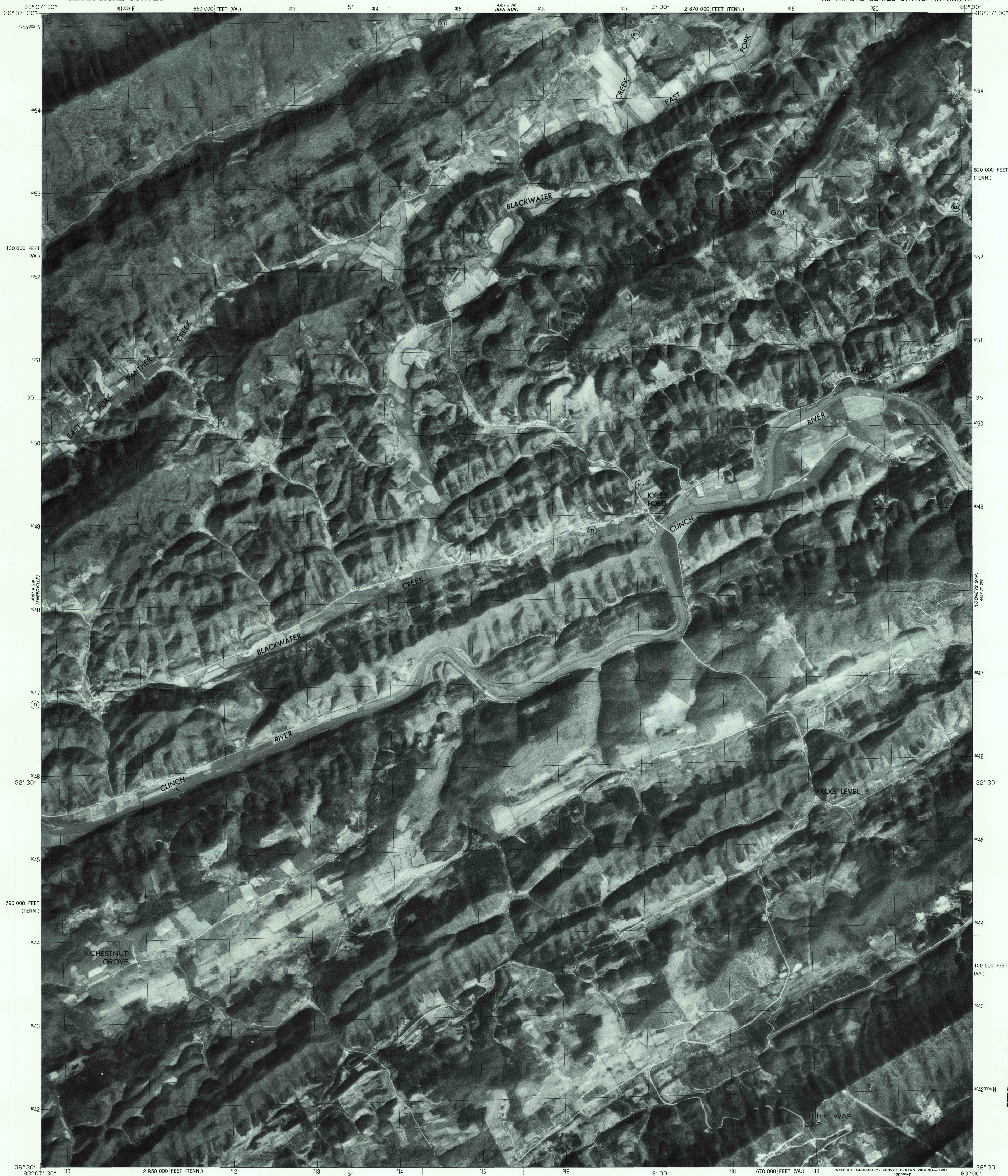
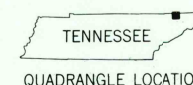
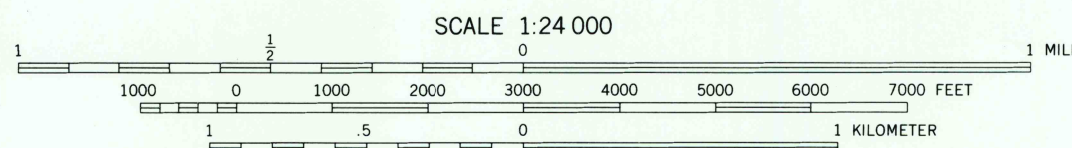
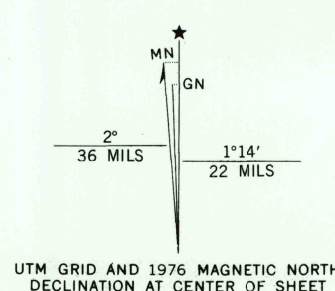


UNITED STATES
DEPARTMENT OF THE INTERIOR
GEOLOGICAL SURVEY

KYLES FORD QUADRANGLE
TENNESSEE-VIRGINIA
7.5 MINUTE SERIES ORTHOPHOTOQUAD



Produced and published by the Geological Survey
in cooperation with Commonwealth of Virginia agencies
Orthophotograph prepared from 1:80,000-scale
aerial photograph taken March 23, 1976
Projection: Tennessee coordinate system (Lambert conformal conic)
10,000-foot grid ticks based on Tennessee coordinate
system and Virginia coordinate system, south zone
1000-meter Universal Transverse Mercator grid,
zone 17. 1927 North American Datum
To place on the predicted North American Datum 1983
move the projection lines to position shown by
dashed corner ticks
Photomagey rectified by automatic correlation



PRINCIPAL NUMBERED HIGHWAYS
Interstate Route U.S. Route State Route

This quadrangle area also covered by
1:24,000-scale topographic map

THIS MAP COMPLIES WITH NATIONAL MAP ACCURACY STANDARDS
FOR SALE BY U.S. GEOLOGICAL SURVEY, RESTON, VIRGINIA 22092
AND VIRGINIA DIVISION OF MINERAL RESOURCES, CHARLOTTESVILLE, VIRGINIA 22903

KYLES FORD, TENN.-VA.
N3630-W8300/7.5
1976

DMA 4357 II SE-SERIES V041

DEC 7 1981

350