

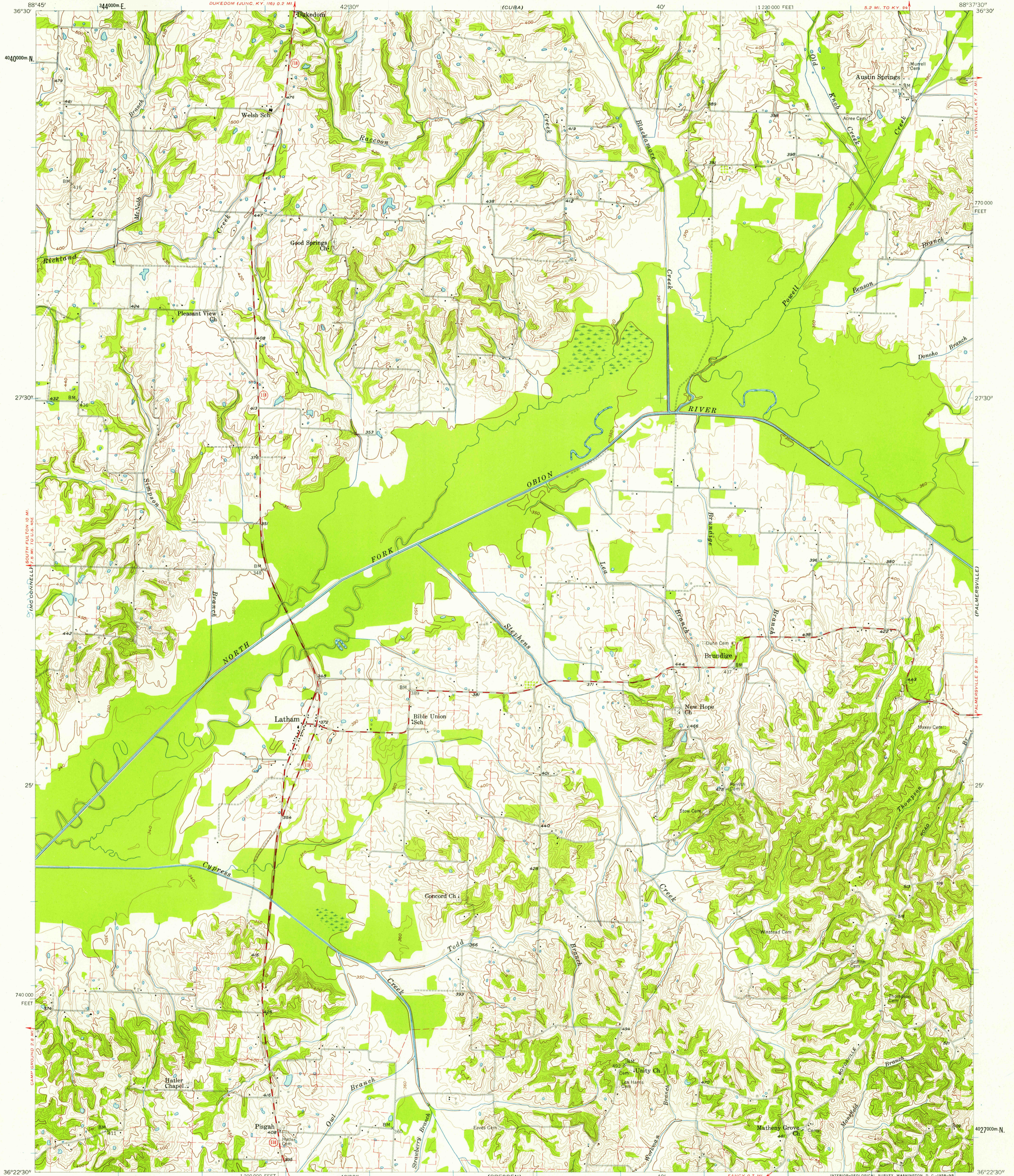
(WATER VALLEY)

UNITED STATES
DEPARTMENT OF THE INTERIOR
GEOLOGICAL SURVEY

STATE OF TENNESSEE
DEPARTMENT OF CONSERVATION
DIVISION OF GEOLOGY

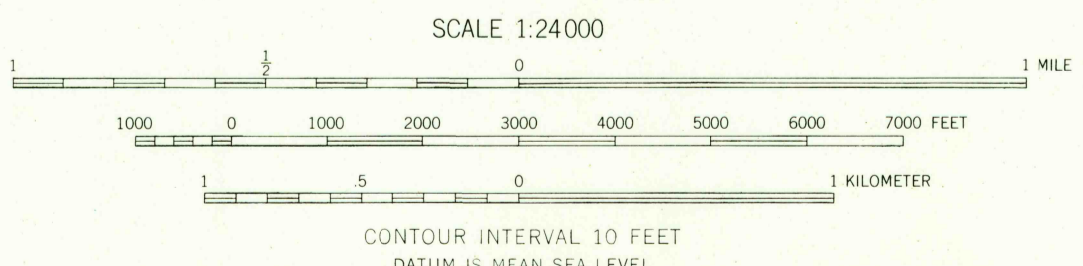
LATHAM QUADRANGLE
TENNESSEE-WEAKLEY CO.
7.5 MINUTE SERIES (TOPOGRAPHIC)

(LYNNVILLE)

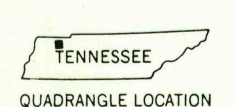


Mapped, edited, and published by the Geological Survey
Control by USGS and USC&GS
Topography from aerial photographs by photogrammetric methods.
Aerial photographs taken 1956. Field check 1956
Polyconic projection. 1927 North American datum
10,000-foot grid based on Tennessee coordinate system
1000-meter Universal Transverse Mercator grid ticks,
zone 16, shown in blue
Fine red dashed lines indicate selected fence and field lines
visible on aerial photographs. This information is unchecked

APPROXIMATE MEAN
DECLINATION, 1956



USGS
HISTORICAL FILE
TOPOGRAPHIC DIVISION



ROAD CLASSIFICATION
Medium-duty — Light-duty
Unimproved dirt —
State Route

U.S.G.S.
FILE COPY
TOPOGRAPHIC DIVISION

LATHAM, TENN.
N 3622.5 - W 8837.5 / 7.5
1956

MAR 26 1958
MAR 26 1958

2385