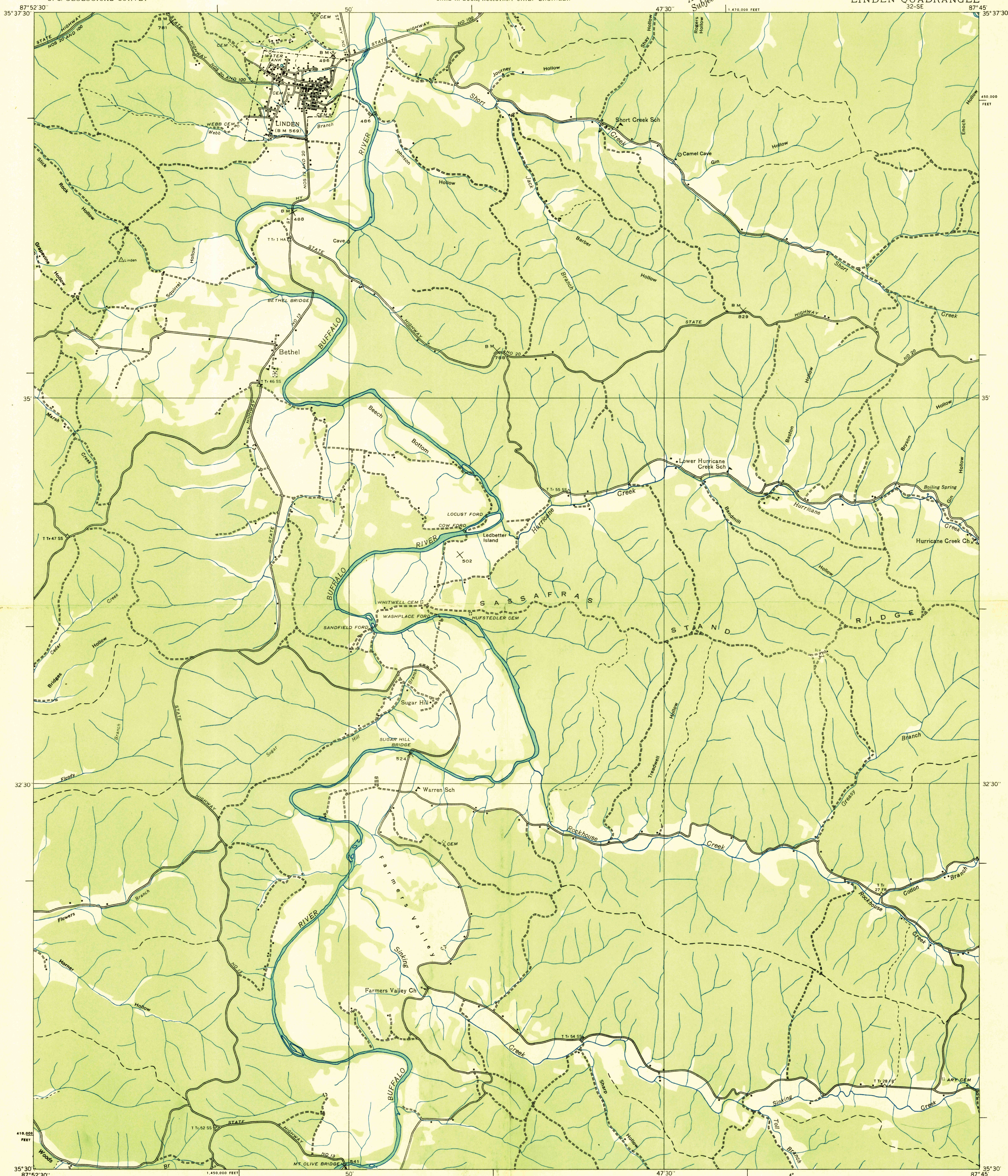
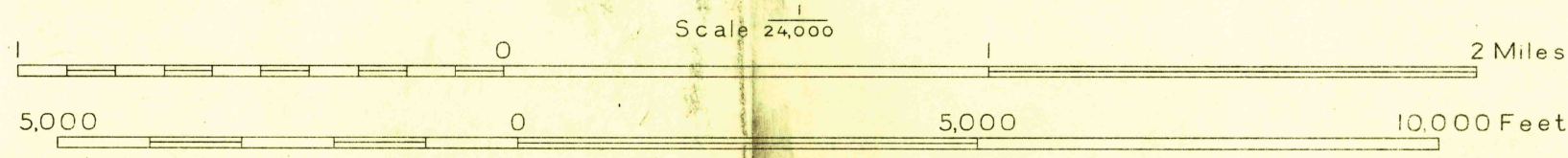


Advance sheet
Subject to correction



Albert Pike, Division Engineer
Compiled by U. S. Geological Survey from aerial photographs
Control by U. S. Geological Survey, U. S. Coast and Geodetic Survey and
Corps of Engineers, U. S. Army
Field examination in 1936



Polyconic projection. 1927 North American datum
10,000 foot grid based on Tennessee
rectangular coordinate system
HISTORICAL FILE
TOPOGRAPHIC DIVISION
APPROXIMATE MEAN
DECLINATION, 1936
Ridge line
Trail
Sinks
LINDEN, TENN.
32-SE