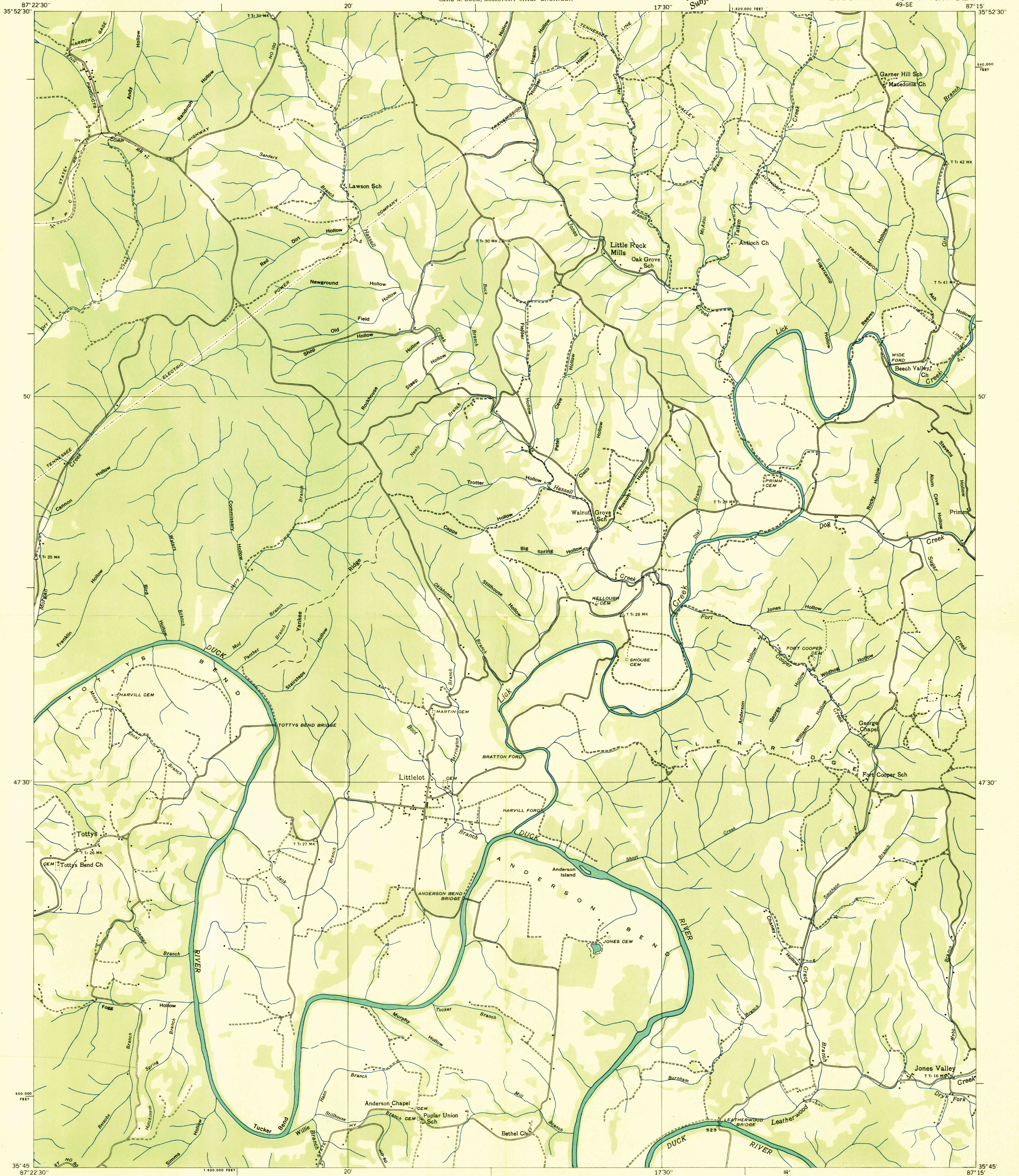
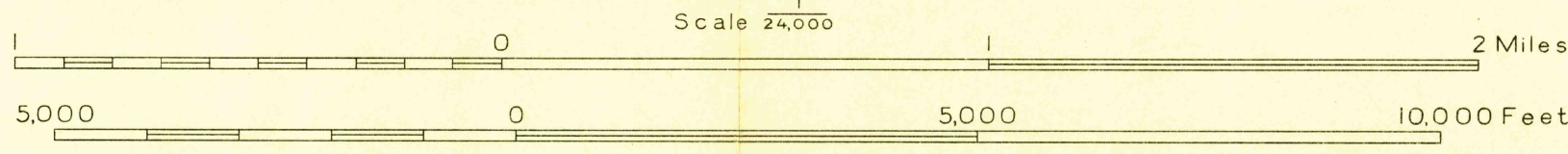


Advance sheet
Subject to correction



Albert Pike, Division Engineer
Compiled by U. S. Geological Survey from aerial photographs
Control by U. S. Geological Survey, U. S. Coast and Geodetic Survey and
Corps of Engineers, U. S. Army
Field examination in 1936



Datum is mean sea level

Polyconic projection. 1927 North American datum
10,000 foot grid based on Tennessee
Magnetic north

USGS
HISTORICAL FILE
TOPOGRAPHIC DIVISION

- Ridge line
- Trail
- Sinks
- Rim rock
- Probable drainage

APPROXIMATE MEAN DECLINATION, 1998

LITTLELOT, TENN.
49-SE