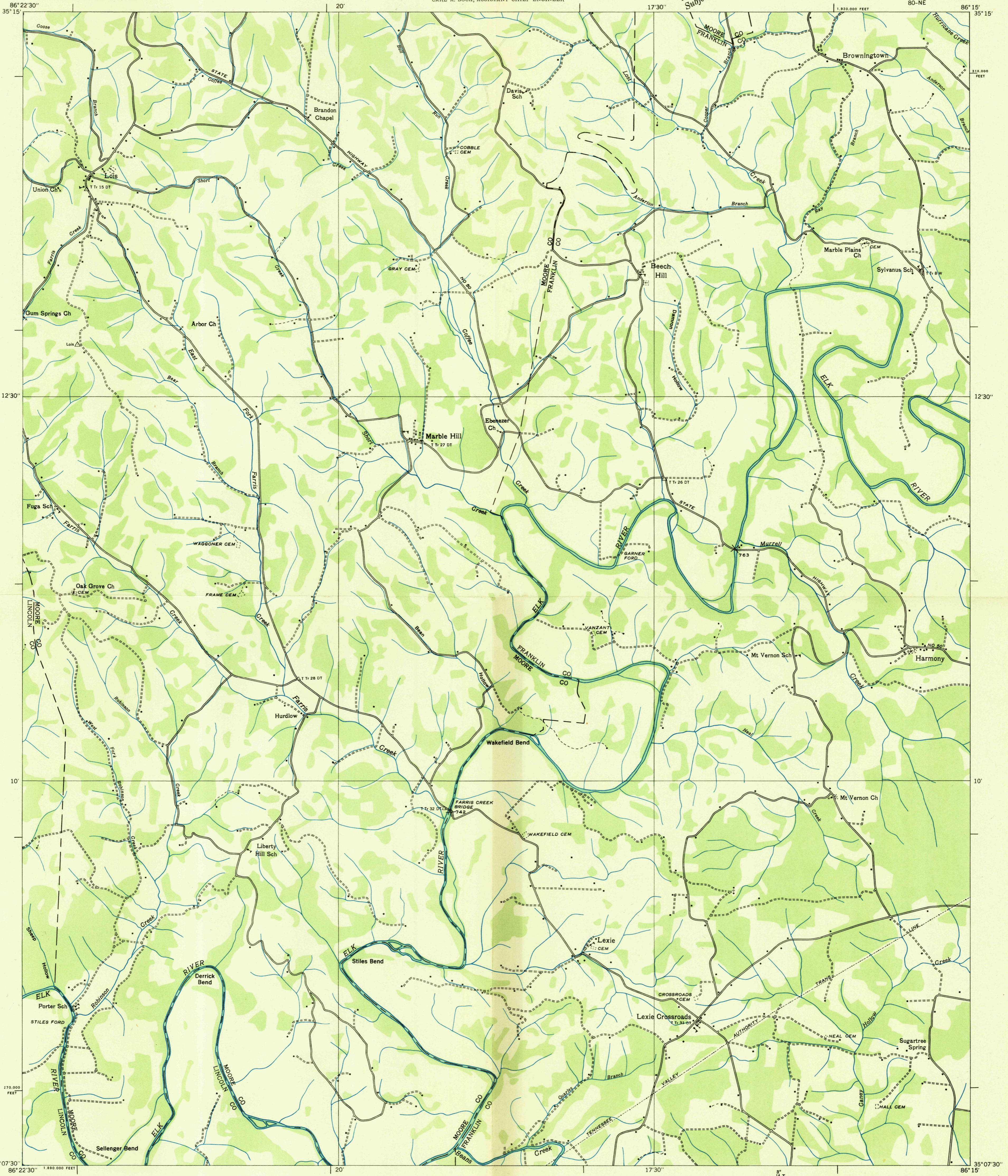
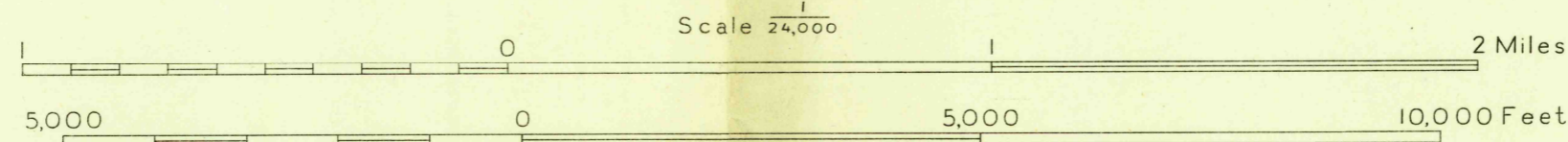


Advance sheet  
Subject to correction



Albert Pike, Division Engineer  
Compiled by U. S. Geological Survey from aerial photographs  
Control by U. S. Geological Survey, U. S. Coast and Geodetic Survey and  
Corps of Engineers, U. S. Army  
Field examination in 1936



Datum is mean sea level

Polyconic projection. 1927 North American datum  
10,000 foot grid based on Tennessee  
rectangular coordinate system  
Trail  
USGS  
HISTORICAL FILE  
TOPOGRAPHIC DIVISION  
APPROXIMATE MEAN  
DECLINATION, 1936  
TRUE NORTH  
MAGNETIC NORTH

LOIS, TENN.  
80-NE