

85°22'30"
35°52'30"

LOST CREEK 0.4 MI.

(DE ROSSETT)

DE ROSSETT 6.4 MI.

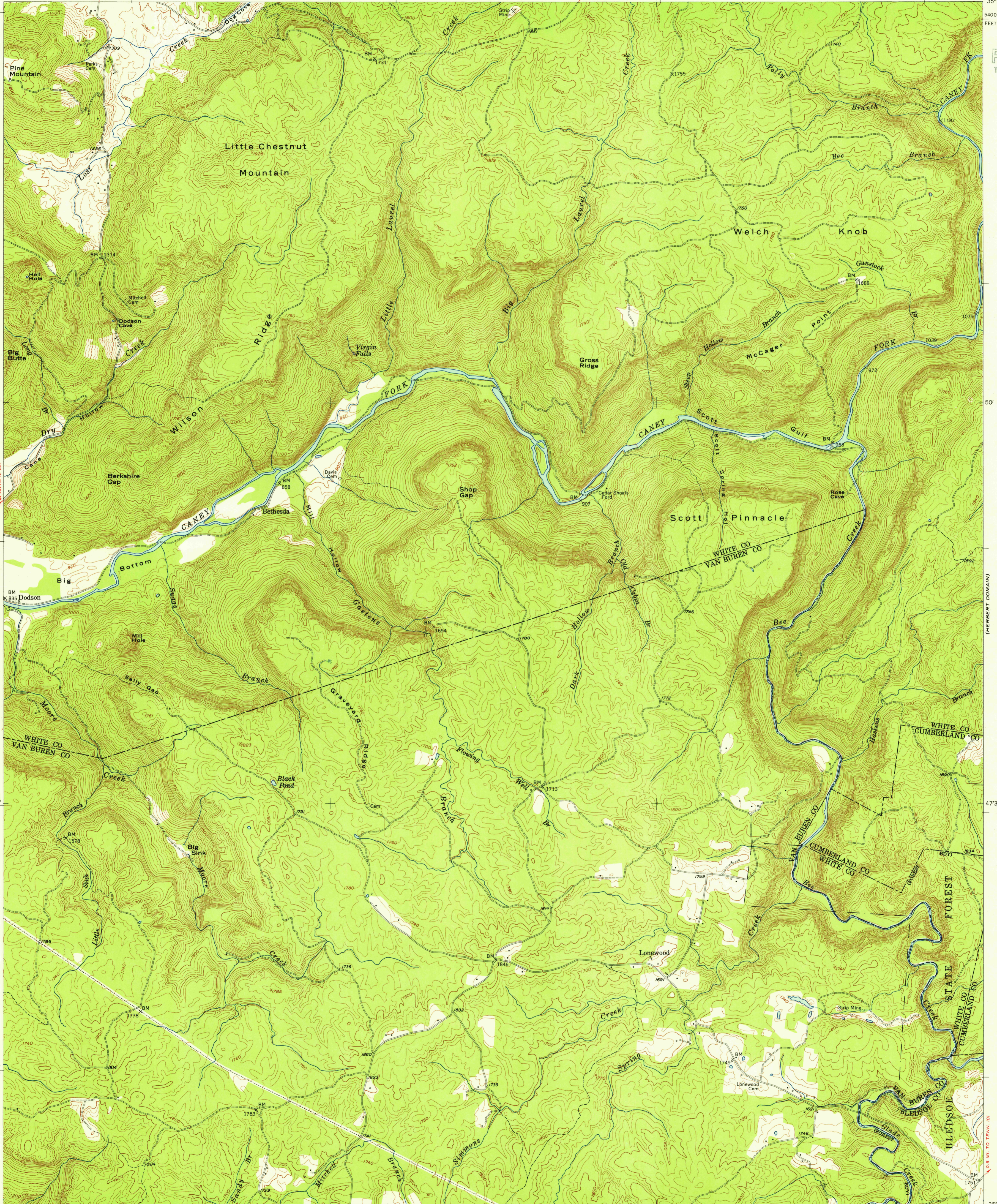
17°30'

2 270 000 FEET

85°15'
35°52'30"

(PLEASANT HILL)

U.S.G.S.
FILE COPY
TOPOGRAPHIC DIVISION



50'

50'

47°30'

47°30'

500 000
FEET

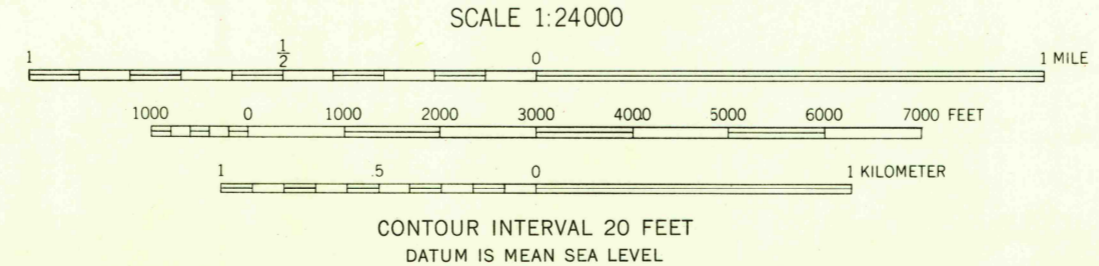
500 000
FEET

35°45'
85°22'30"

35°45'
85°15'

Mapped, edited, and published by the Geological Survey
Control by USGS, USC&GS, USCE, and TVA
Topography from aerial photographs by multiplex methods
Aerial photographs taken 1951. Field check 1954
Polyconic projection. 1927 North American datum
10,000-foot grid based on Tennessee coordinate system
Contours in strip mine areas compiled from 1951 photography
Unchecked elevations are shown in brown

TRUE NORTH
MAGNETIC NORTH
APPROXIMATE MEAN
DECLINATION, 1954



USGS
HISTORICAL FILE
TOPOGRAPHIC DIVISION

TENNESSEE
QUADRANGLE LOCATION

ROAD CLASSIFICATION

Heavy-duty ——— Light-duty ———
Medium-duty ——— Unimproved dirt ———
U. S. Route State Route

U.S.G.S.
FILE COPY
TOPOGRAPHIC DIVISION

LONEWOOD, TENN.
N3545-W8515/7.5
1954

THIS MAP COMPLIES WITH NATIONAL MAP ACCURACY STANDARDS
FOR SALE BY U. S. GEOLOGICAL SURVEY, WASHINGTON 25, D. C.
AND TENNESSEE DIVISION OF GEOLOGY, NASHVILLE, TENN.
A FOLDER DESCRIBING TOPOGRAPHIC MAPS AND SYMBOLS IS AVAILABLE ON REQUEST

AUG 10 1955

2585