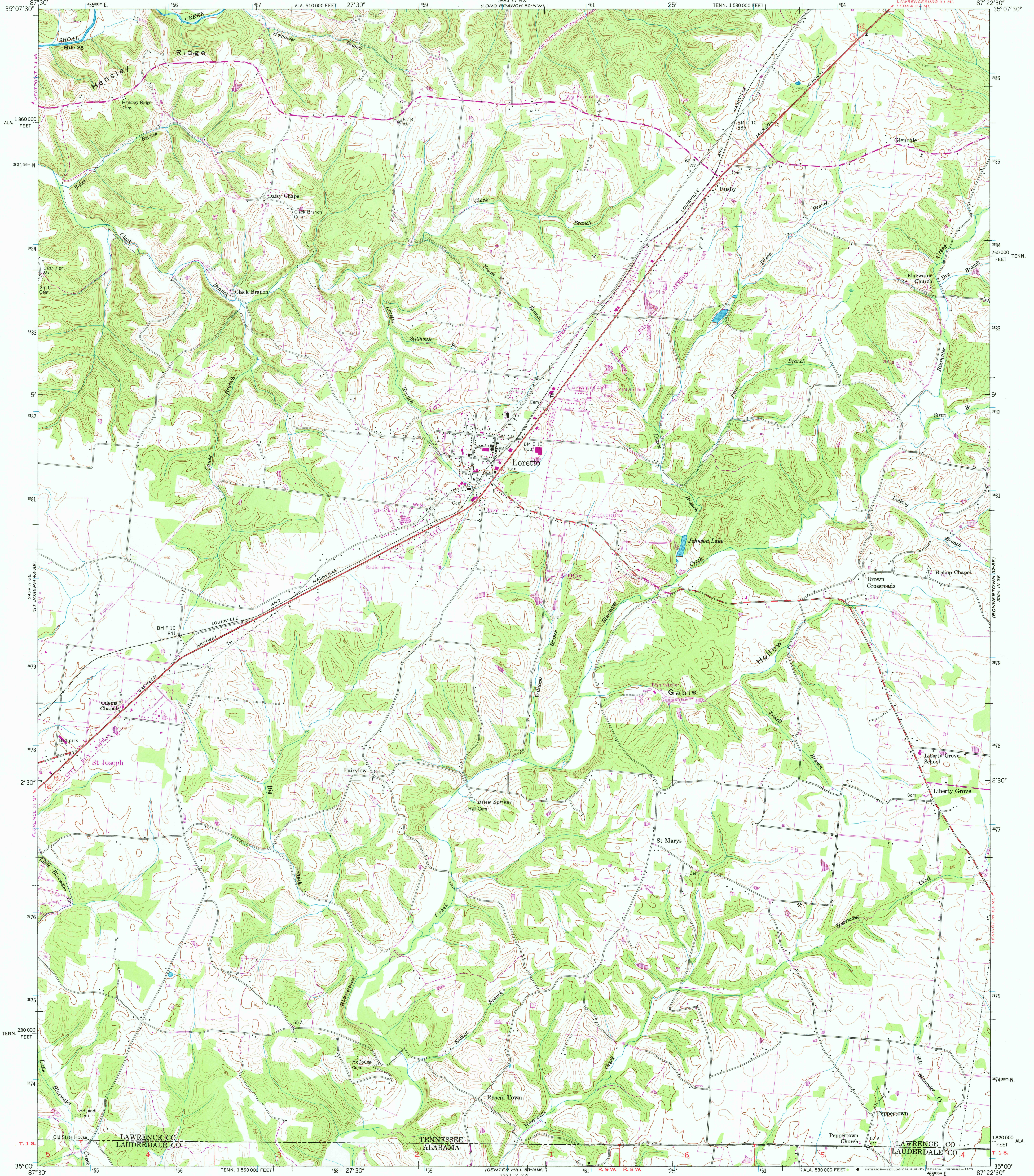


UNITED STATES
DEPARTMENT OF THE INTERIOR
GEOLOGICAL SURVEY

UNITED STATES
TENNESSEE VALLEY AUTHORITY
MAPPING SERVICES BRANCH

LORETTO QUADRANGLE
TENNESSEE-ALABAMA
7.5 MINUTE SERIES (TOPOGRAPHIC) 52-SW



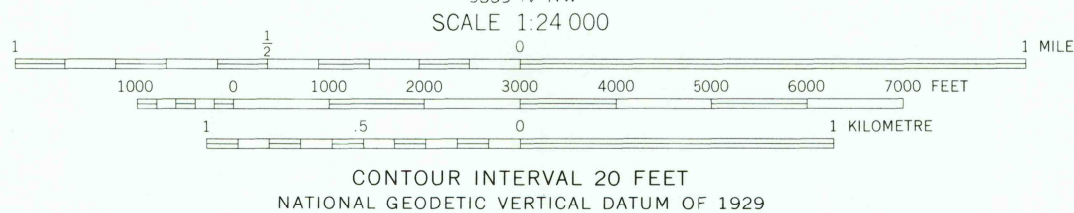
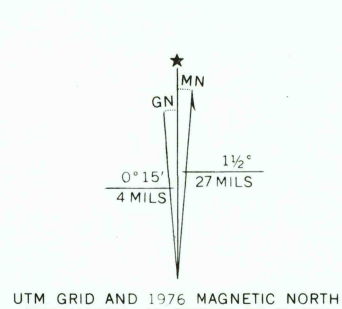
Mapped and edited by Tennessee Valley Authority
Published by the Geological Survey

Control by NOS/NOAA, USGS, and TVA
Topography by USGS and TVA by photogrammetric methods using
aerial photographs taken 1946. Map field checked by TVA, 1950

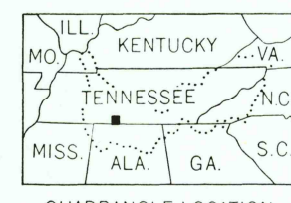
Polyconic projection, 1927 North American datum
10,000 foot grid based on Tennessee and Alabama (West)
rectangular coordinate systems
1000 metre Universal Transverse Mercator Grid ticks,
Zone 16, shown in blue

Fine purple dashed lines indicate selected fence and field lines
visible on aerial photographs. This information is unchecked.

Revisions shown in purple and recompilation of woodland
areas compiled by the Tennessee Valley Authority from aerial
photographs taken 1976. This information not field checked



THIS MAP COMPLIES WITH NATIONAL MAP ACCURACY STANDARDS
FOR SALE BY U.S. GEOLOGICAL SURVEY, RESTON, VIRGINIA 22092
TENNESSEE DIVISION OF GEOLOGY, NASHVILLE, TENN. 37219
U.S. TENNESSEE VALLEY AUTHORITY, CHATTANOOGA, TENN. 37401 OR KNOXVILLE, TENN. 37902.
A FOLDER DESCRIBING TOPOGRAPHIC MAPS AND SYMBOLS IS AVAILABLE ON REQUEST



ROAD CLASSIFICATION
Heavy-duty Poor motor road
Medium-duty Wagon and jeep track
Light-duty Foot trail
In developed areas, only through roads are classified

USGS
Historical File
Topographic Division

LORETTO, TENN.-ALA. 2800
N3500-W8722.5/7.5
1950

PHOTOREVISED 1976
AMS 3554 III SW-SERIES V84I

MAR 15 1978