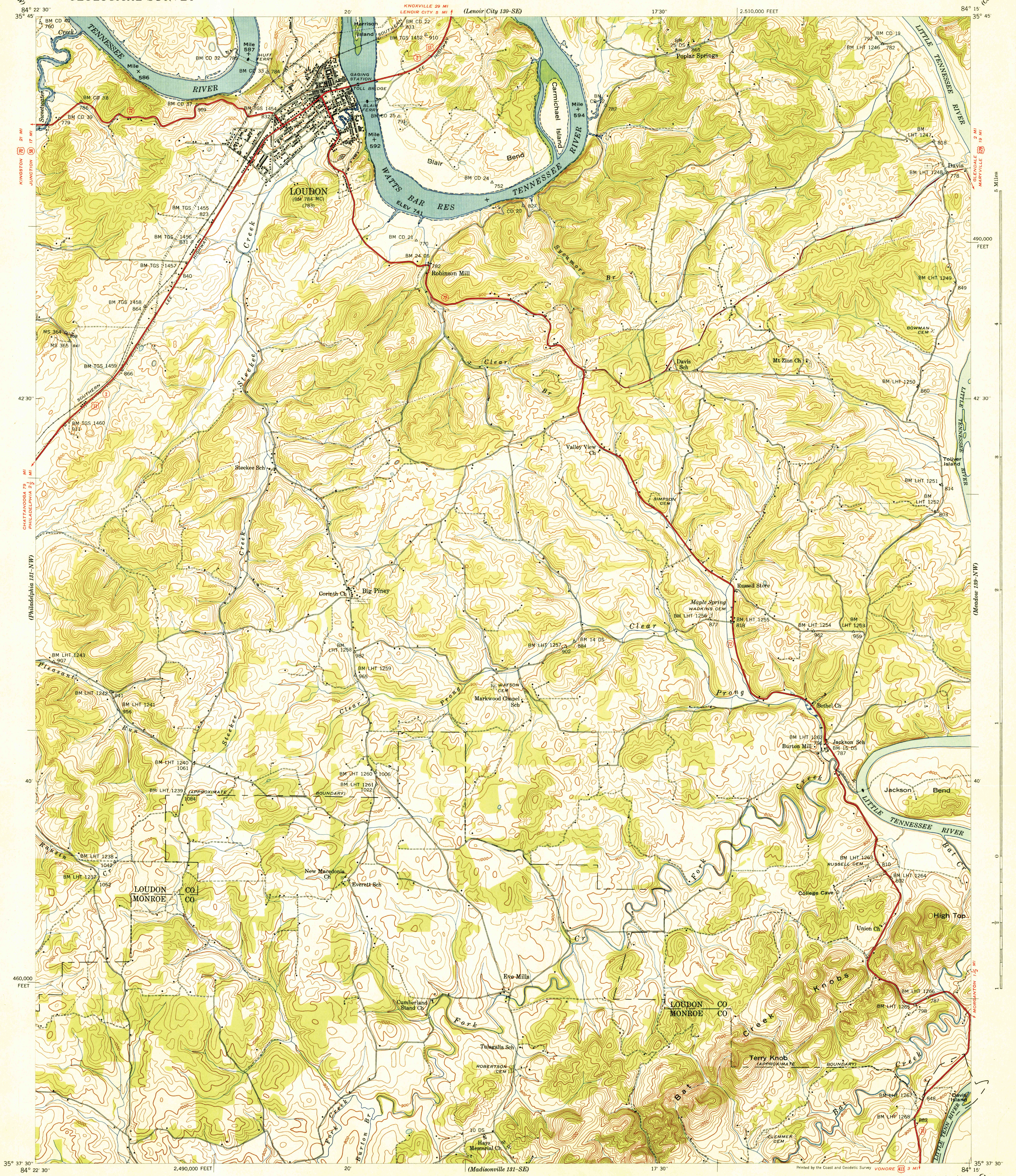


UNITED STATES
DEPARTMENT OF THE INTERIOR
GEOLOGICAL SURVEY

UNITED STATES
TENNESSEE VALLEY AUTHORITY
MAPS AND SURVEYS DIVISION

TENNESSEE
LOUDON QUADRANGLE
131-NE



Control by USC & GS, USGS, and TVA
Topography by Geological Survey from aerial
photographs by stereophotogrammetric methods.
Field examination by Tennessee Valley Authority—1940

--- Approximate outline of Watts Bar Reservoir

TRUE NORTH
MAGNETIC NORTH
APPROXIMATE MEAN
DECLINATION, 1940

Scale: 24,000
1 inch = 2,000 feet
1 centimeter = 200 meters
1 mile = 1,609 meters
1 kilometer = 1,000 meters

Contour interval 20 feet
Datum is mean sea level

USGS
HISTORICAL FILES
TOPOGRAPHIC DIVISION
Index on and facing

JUL 9 - 1941

ROUTES USUALLY TRAVELED
HARD IMPERVIOUS SURFACES
OTHER SURFACE IMPROVEMENTS
U.S. ROUTE

LOUDON, TENN.
131-NE
Edition of 1940
N 3537.5-W 8415.7.5