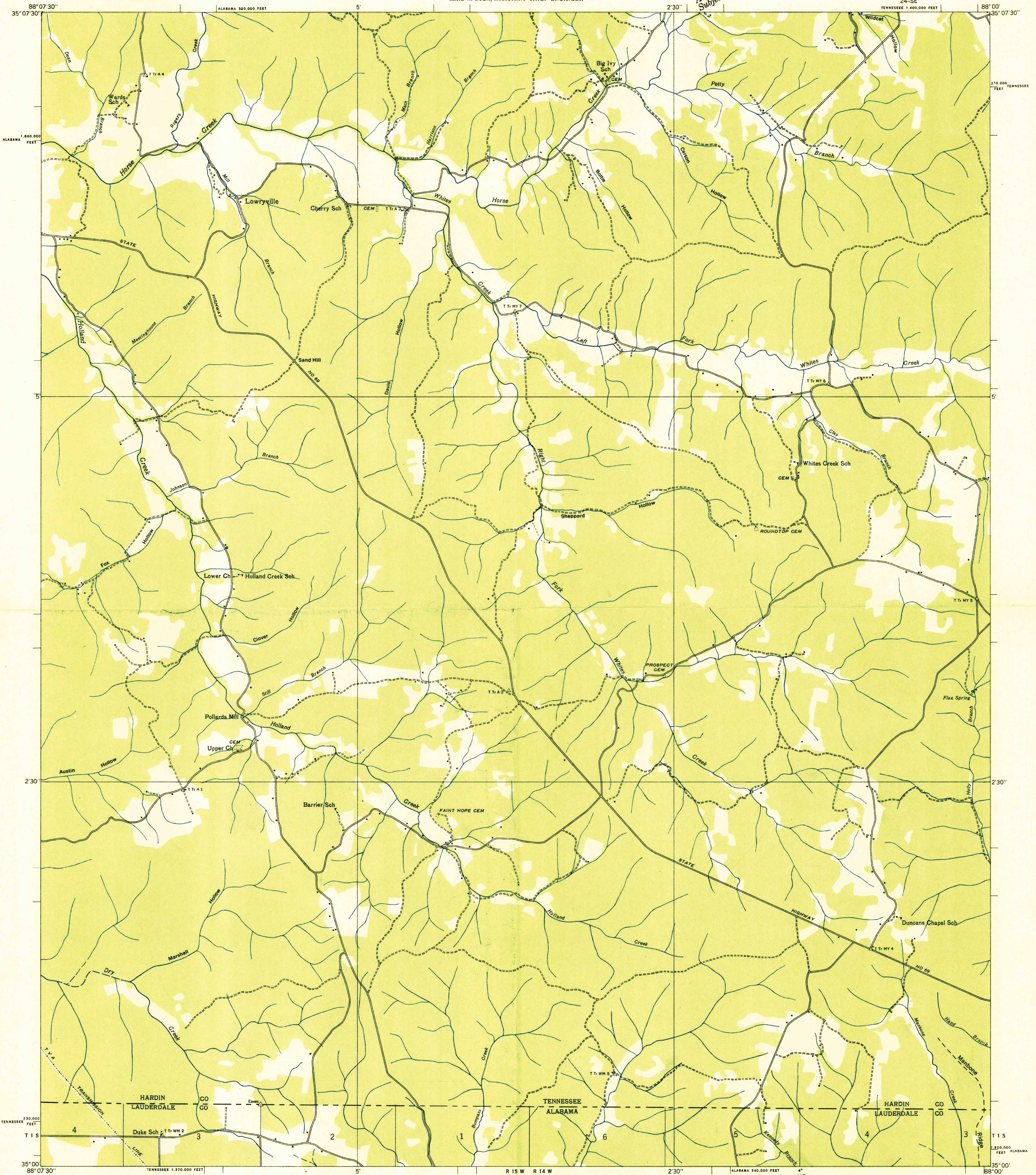
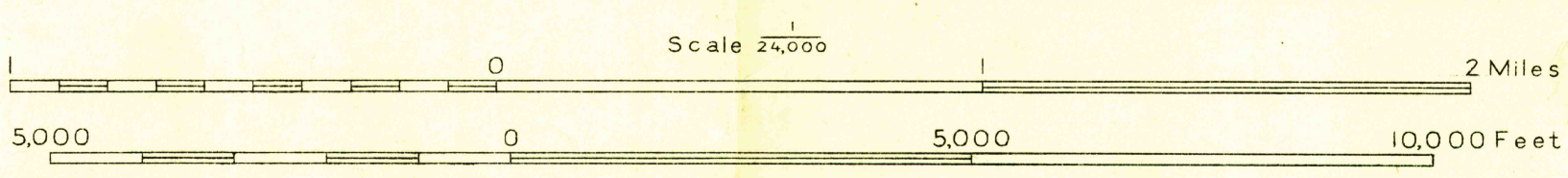


Advance sheet
Subject to correction



Albert Pike, Division Engineer
Compiled by U. S. Geological Survey from aerial photographs
Control by U. S. Geological Survey and U. S. Coast and Geodetic Survey
Field examination in 1936



USGS
HISTORICAL FILE
TOPOGRAPHIC DIVISION
Ridge line
Trail
Probable drainage

LOWRYVILLE, TENN.-ALA.
24-SE