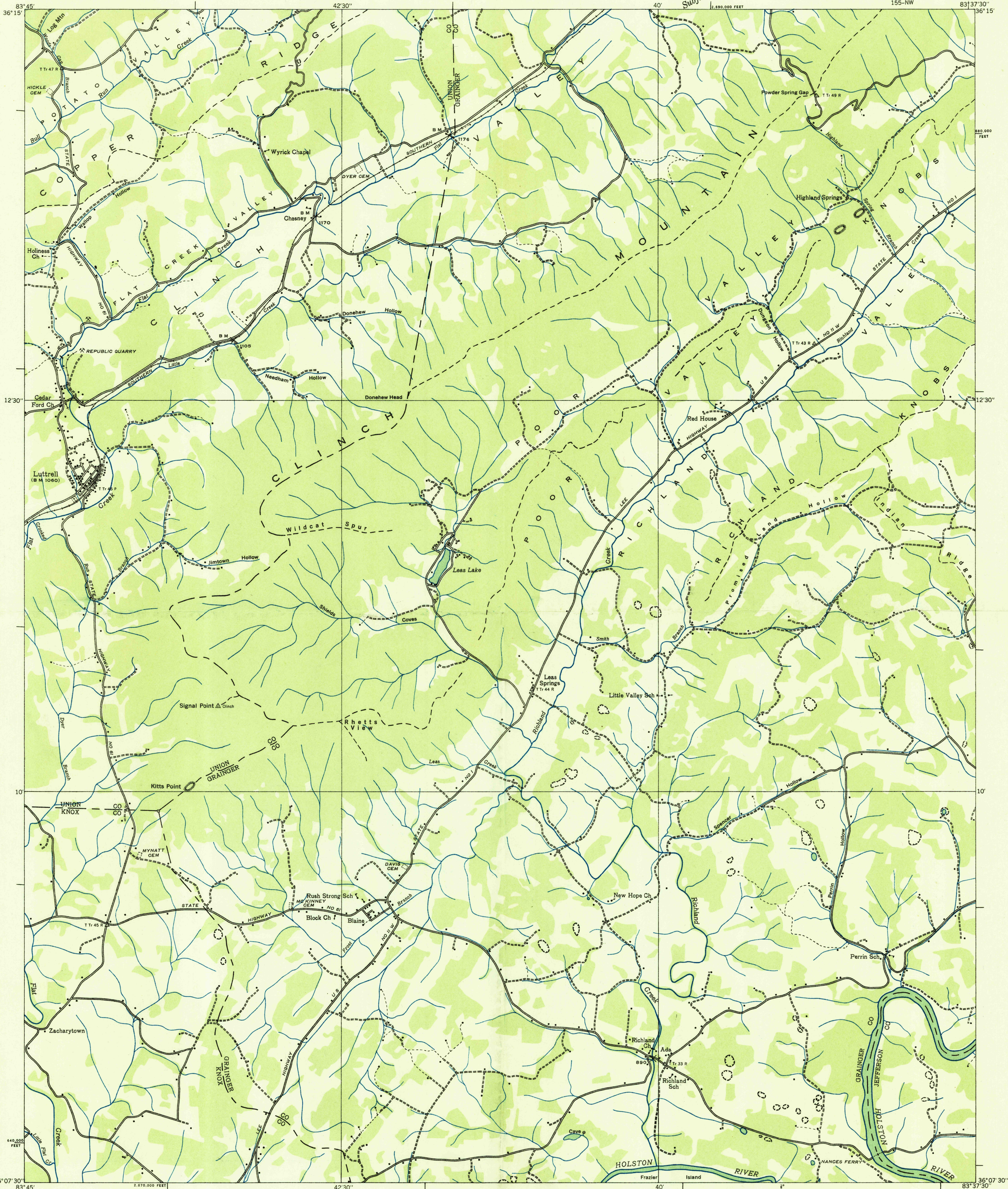
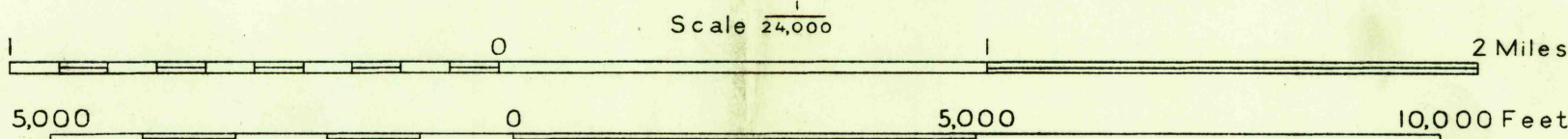


Advance sheet
Subject to correction



Albert Pike, Division Engineer
Compiled by U. S. Geological Survey from aerial photographs
Control by U. S. Geological Survey, U. S. Coast and Geodetic Survey and
Corps of Engineers, U. S. Army
Field examination in 1935



Datum is mean sea level

Polyconic projection. 1927 North American datum
10,000 foot grid based on Tennessee
rectangular coordinate system

USGS
HISTORICAL FILE
TOPOGRAPHIC DIVISION

APPROXIMATE MEAN
DECLINATION, 1911

TRUE NORTH
MAGNETIC NORTH

Ridge line
Trail
Sinks

LUTTRELL, TENN.
155-NW