

U. S. G. S.
FILE COPY
Inspection and Editing.

UNITED STATES
DEPARTMENT OF THE INTERIOR
GEOLOGICAL SURVEY

UNITED STATES
TENNESSEE VALLEY AUTHORITY
MAPS AND SURVEYS DIVISION

TENNESSEE
LUTTRELL QUADRANGLE

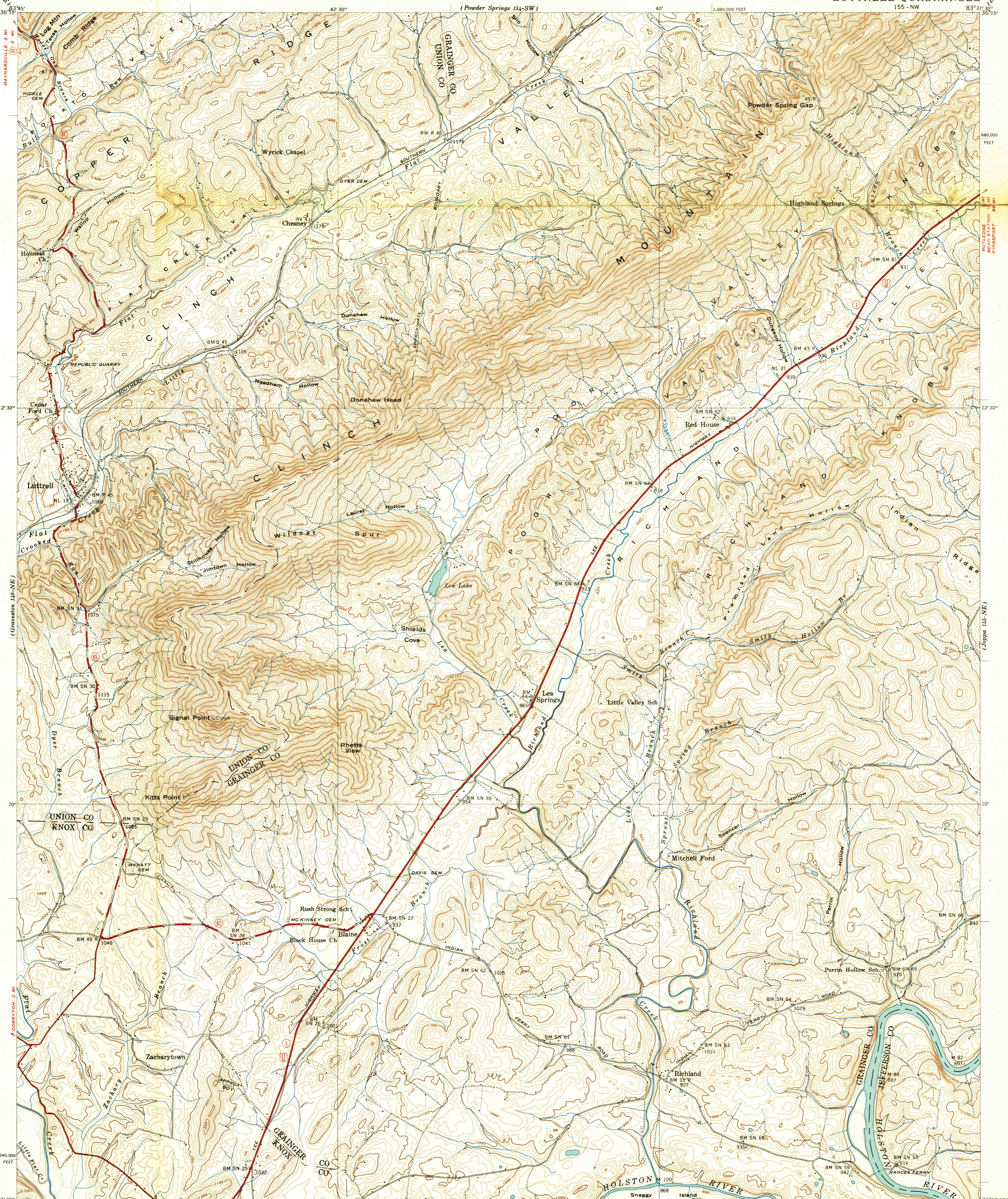
(Powder Springs 154-SW)

2,690,000 FEET

155 - NW

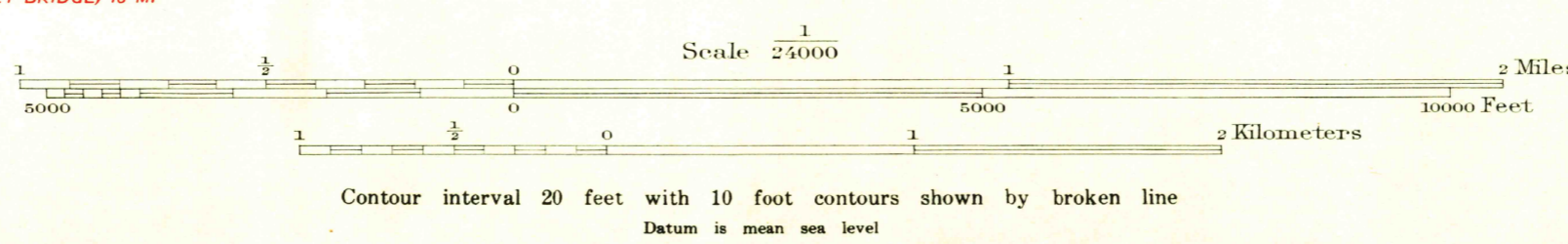
83°37'30"

(Duck Valley 154-SE)



Control by USCG&S, USGS, and TVA.
Topography by Geological Survey from aerial
photographs by stereophotogrammetric methods.
Field examination by Tennessee Valley Authority, 1938.

APPROXIMATE MEAN
DECLINATION, 1939



USGS
HISTORICAL FILE
TOPOGRAPHIC DIVISION

Polyconic projection. 1927 North American datum
10,000 foot grid based on Tennessee
rectangular coordinate system
HARD IMPERVIOUSLY SURFACED ROADS
OTHER MAIN TRAVELED ROADS
U S ROUTE
STATE ROUTE

U. S. G. S.
FILE COPY
Inspection and Editing.

LUTTRELL TENN.
155 - NW
Edition of 1939
2643-0085; 70;
ENGRAVED AND PRINTED BY WILLIAMS & HEINTZ CO., WASH., D. C.

OCT 31 1939