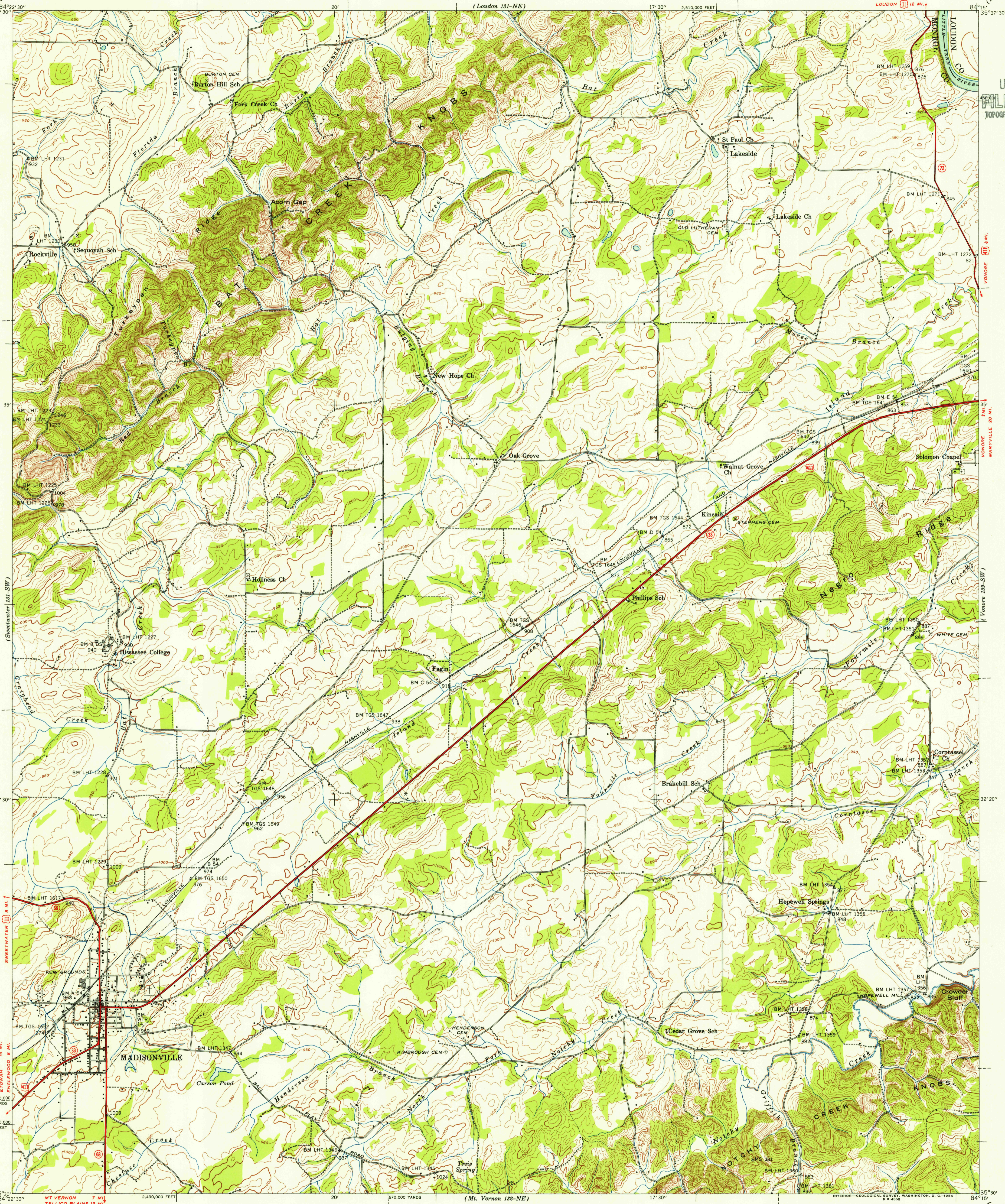


(Loudon 131-NE)

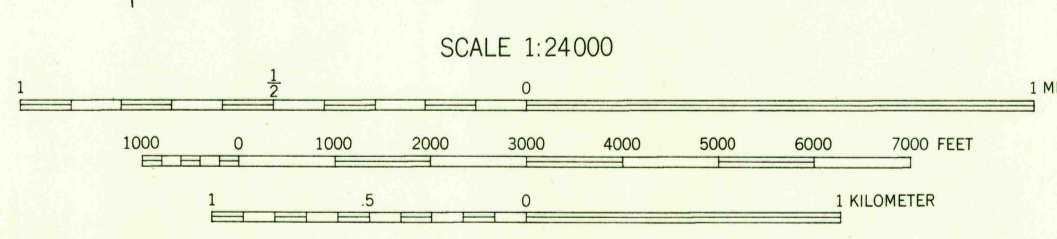
(Loudon 131-MI)

U.S.G.S.
FILE COPY
TOPOGRAPHIC DIVISION



Control by US&CGS, USGS, and TVA
Topography by Geological Survey from aerial
photographs by stereophotogrammetric methods
Field examination by Tennessee Valley Authority, 1940

TRUE NORTH
MAGNETIC NORTH
APPROXIMATE MEAN
DECLINATION, 1941



Contour interval 20 feet
Datum is mean sea level

FOR SALE BY U. S. GEOLOGICAL SURVEY, WASHINGTON 25, D. C.
TENNESSEE DIVISION OF GEOLOGY, NASHVILLE, TENN.
AND U. S. TENNESSEE VALLEY AUTHORITY, CHATTANOOGA OR KNOXVILLE, TENN.
A FOLDER DESCRIBING TOPOGRAPHIC MAPS AND SYMBOLS IS AVAILABLE ON REQUEST

USGS
HISTORICAL FILE
TOPOGRAPHIC DIVISION

USGS
TOPOGRAPHIC DIVISION
MADISONVILLE, TENN.
131-SE
N 3530-W 8415/7.5
1940

Polyconic projection. 1927 North American datum
10,000 foot grid based on Tennessee
rectangular coordinate system
5000 yard grid based on U. S. zone system B

ROUTES USUALLY TRAVELED
OTHER SURFACE IMPROVEMENTS
US ROUTE STATE ROUTE

U.S.G.S.
FILE COPY
TOPOGRAPHIC DIVISION

JAN 10 1955