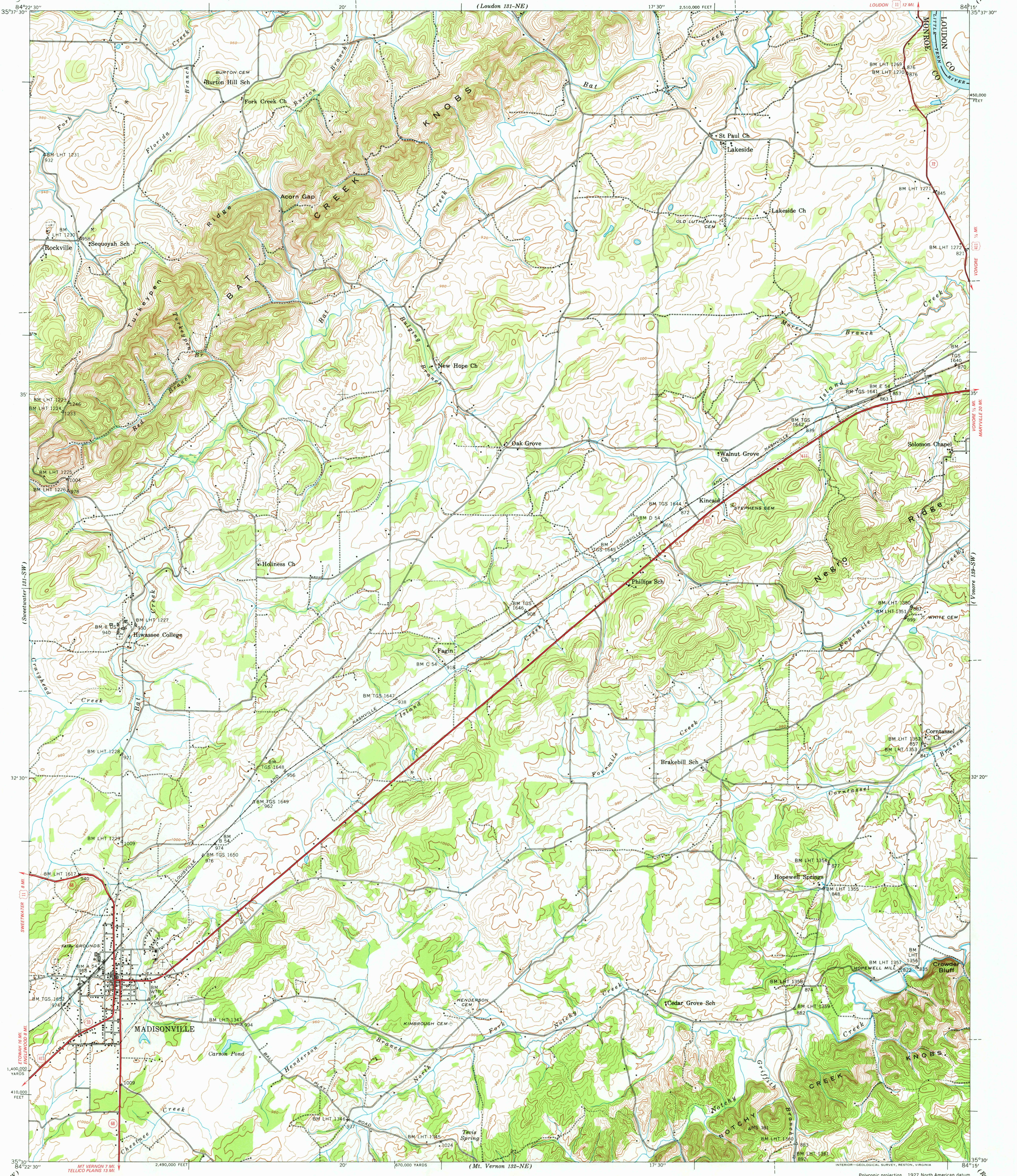


(London 131-NE)

17° 30' 2.510,000 FEET

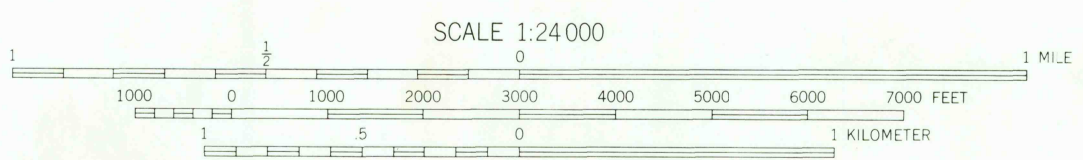
LOUDDON (11) 12 MI.

84° 15' (Meridian 130-NW)



Control by US&CGS, USGS, and TVA
Topography by Geological Survey from aerial
photographs by stereophotogrammetric methods
Field examination by Tennessee Valley Authority, 1940

TRUE NORTH
MAGNETIC NORTH
APPROXIMATE MEAN
DECLINATION, 1941



SCALE 1:24 000
CONTOUR INTERVAL 20 FEET
NATIONAL GEODETIC VERTICAL DATUM OF 1929

FOR SALE BY U.S. GEOLOGICAL SURVEY, RESTON, VIRGINIA 22092.
TENNESSEE DIVISION OF GEOLOGY, NASHVILLE, TENN. 37219.
U.S. TENNESSEE VALLEY AUTHORITY, CHATTANOOGA, TENN. 37401 OR KNOXVILLE, TENN. 37902.
A FOLDER DESCRIBING TOPOGRAPHIC MAPS AND SYMBOLS IS AVAILABLE ON REQUEST

Polyconic projection, 1927 North American datum
10,000 foot grid based on Tennessee
rectangular coordinate system
5000 yard grid based on U. S. zone system B
ROUTES USUALLY TRAVELED
HARD IMPERVIOUS SURFACES
OTHER SURFACE IMPROVEMENTS
U. S. ROUTE STATE ROUTE
MADISONVILLE, TENN.
131-SE
N3530-W8415/7.5
1940

USGS
Historical File
Topographic Division

MAY 03 1977

1300