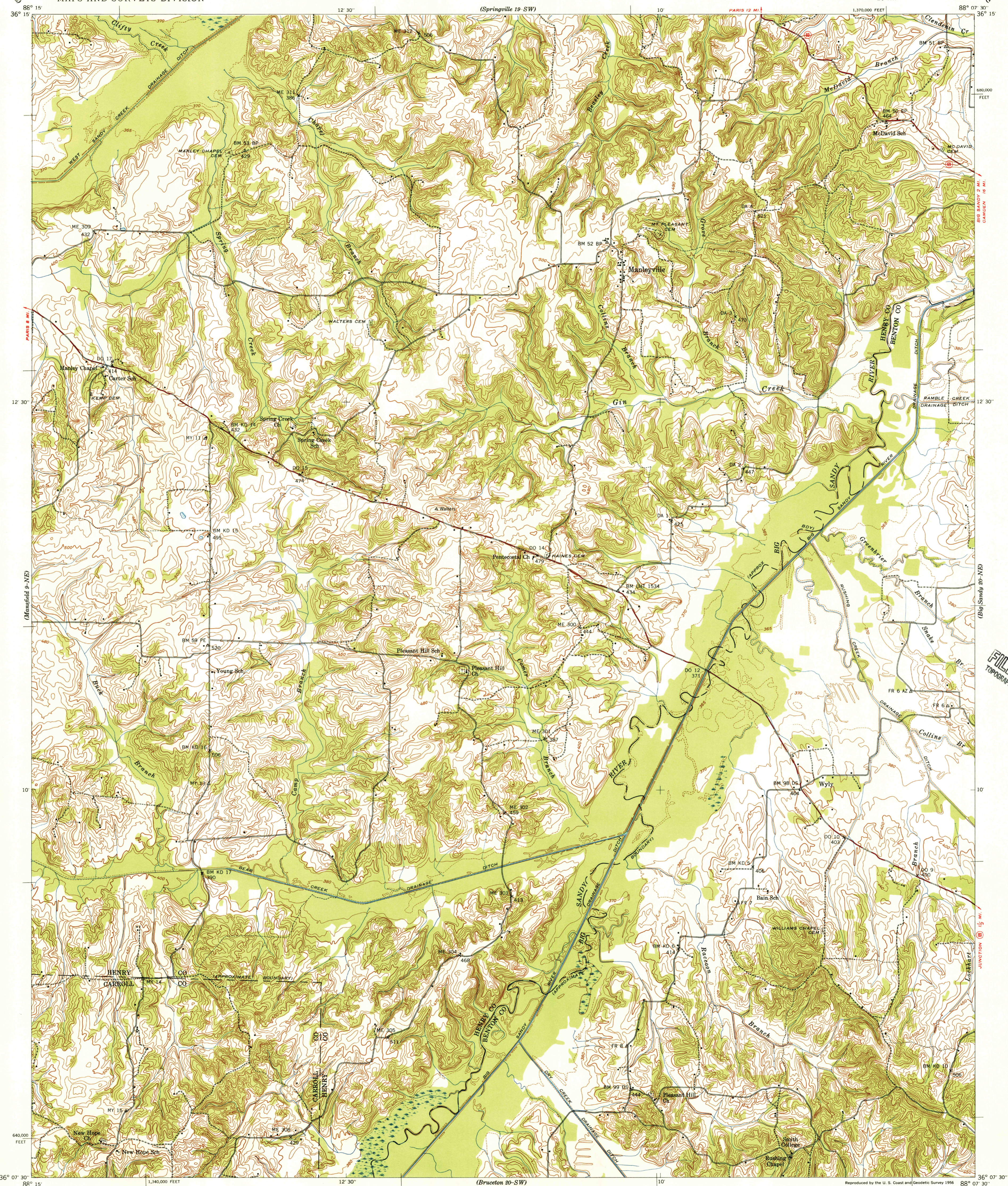


(Paris 8-SE)

UNITED STATES
TENNESSEE VALLEY AUTHORITY
MAPS AND SURVEYS DIVISION

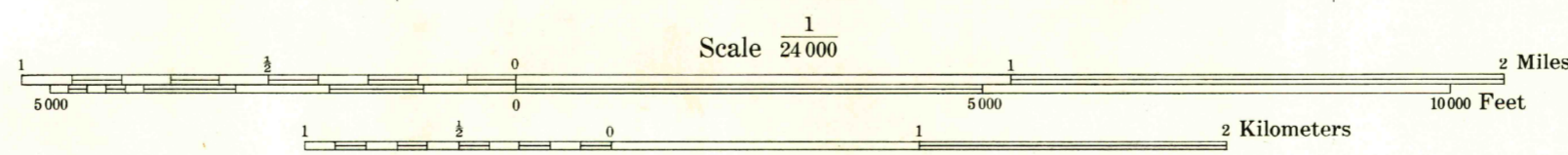
TENNESSEE
MANLEYVILLE QUADRANGLE
20-NW

(Poplar Creek 19-SE)



Control by USC & GS, USGS, and TVA
Topography by Aero Service Corporation,
by stereophotogrammetric methods
Field examination by Tennessee Valley Authority—1940
Office inspection and review by the Geological Survey

TRUE NORTH
MAGNETIC NORTH
APPROXIMATE MEAN
DECLINATION 1941



Contour interval 10 feet with 5-foot contours shown by broken line
Datum is mean sea level

FOR SALE BY U. S. GEOLOGICAL SURVEY, WASHINGTON 25, D. C.
AND U. S. TENNESSEE VALLEY AUTHORITY, CHATTANOOGA OR KNOXVILLE, TENN.
A FOLDER DESCRIBING TOPOGRAPHIC MAPS AND SYMBOLS IS AVAILABLE ON REQUEST

USGS
HISTORICAL FILE
TOPOGRAPHIC DIVISION
U.S.G.S.
FILE COPY
TOPOGRAPHIC DIVISION

Reproduced by the U. S. Coast and Geodetic Survey 1956
Polyconic projection, 1927 North American datum
10,000 foot grid based on Tennessee
rectangular coordinate system
ROUTES USUALLY TRAVELED
HARD IMPERVIOUS SURFACE
OTHER SURFACE IMPROVEMENTS
U S ROUTE STATE ROUTE
MANLEYVILLE, TENN.
20-NW
N3607.5W8807.5/7.5
1940

U.S.G.S.
FILE COPY
TOPOGRAPHIC DIVISION

(Canada 20-SE)