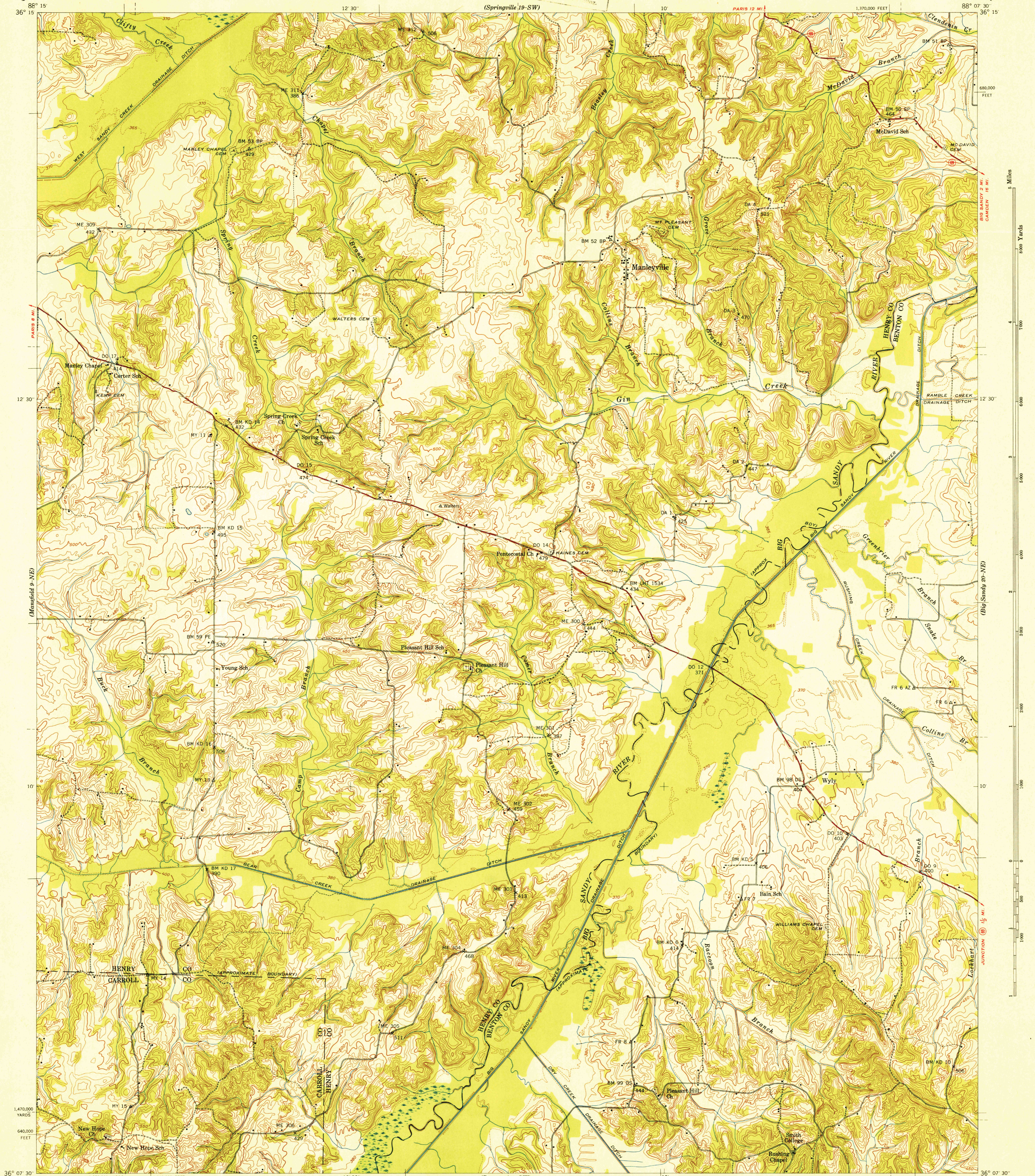
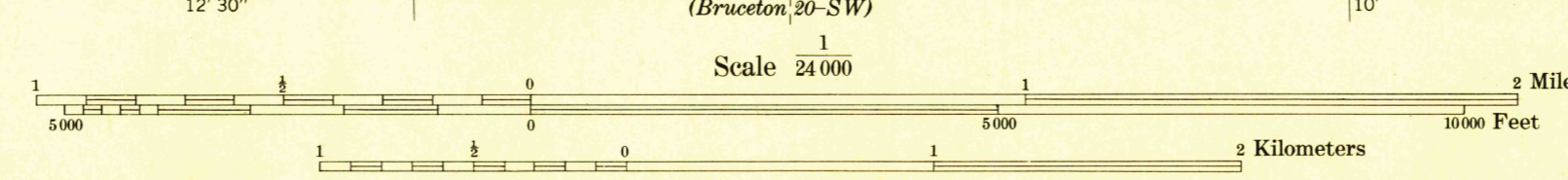


U. S. G. S.
FILE COPY
Inspection and Control



Control by USC & GS, USGS, and TVA
Topography by Aero Service Corporation,
by stereophotogrammetric methods
Field examination by Tennessee Valley Authority—1940
Office inspection and review by the Geological Survey
Maps distributed by the Geological Survey

TRUE NORTH
MAGNETIC NORTH
APPROXIMATE MEAN
DECLINATION 1941



Scale 24,000
Contour interval 10 feet with 5-foot contours shown by broken line
Datum is mean sea level

USGS
HISTORICAL FILE
TOPOGRAPHIC DIVISION

U. S. G. S.
FILE COPY
Inspection and Control

Reproduced by the Coast and Geodetic Survey
Polyconic projection, 1927 North American datum
10,000 foot grid based on Tennessee
rectangular coordinate system
5,000 yard grid based on U. S. zone system, C
ROUTES USUALLY TRAVELED
HARD IMPERVIOUS SURFACES
OTHER SURFACE IMPROVEMENTS
U. S. ROUTE STATE ROUTE

MANLEYVILLE, TENN.
20-NW
Edition of 1941
N3607.5-W8807.5/7.5

4065-1942