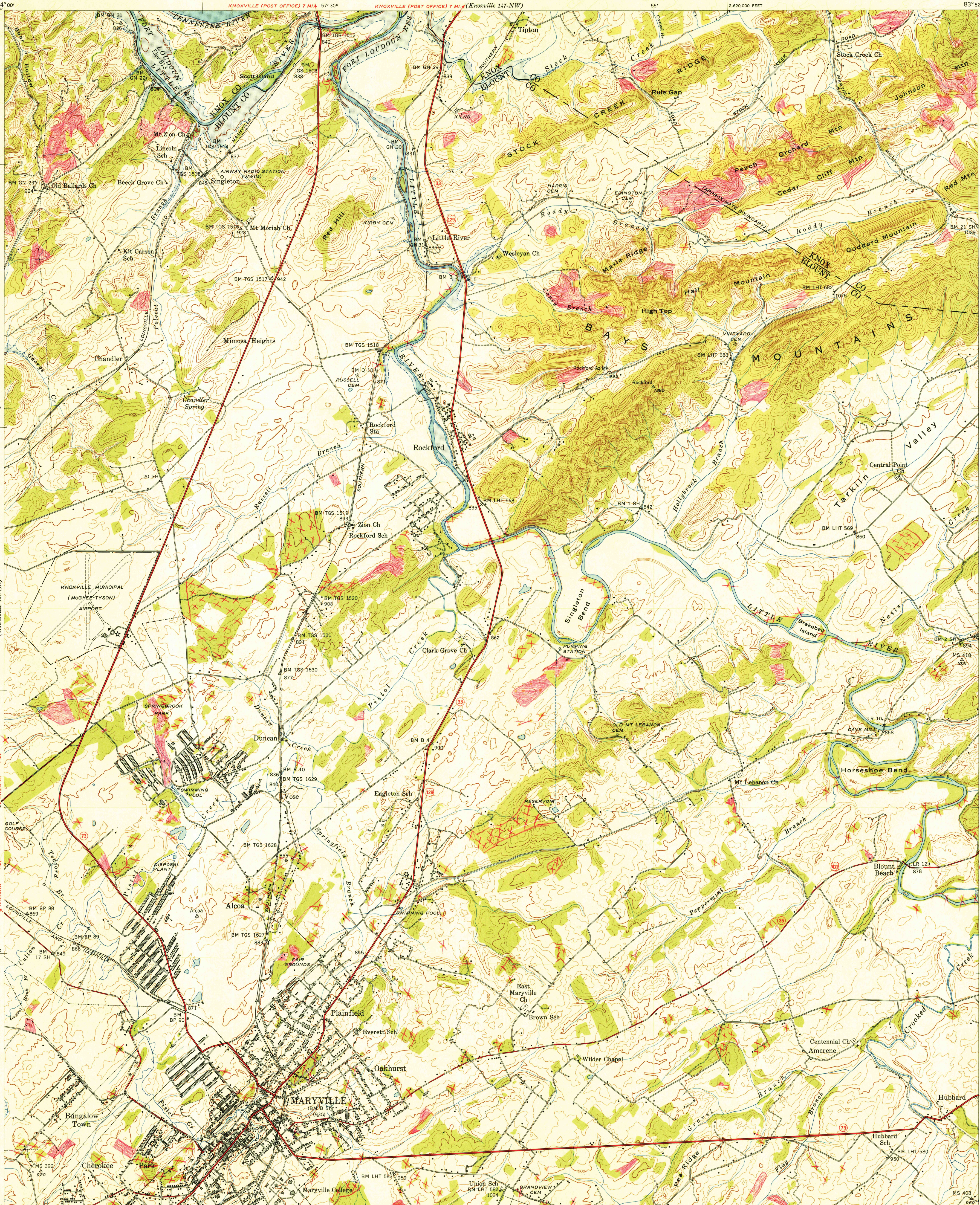


UNITED STATES
DEPARTMENT OF THE INTERIOR
GEOLOGICAL SURVEY

UNITED STATES
TENNESSEE VALLEY AUTHORITY
MAPS AND SURVEYS DIVISION

U. S. G. S.
FILE COPY
Information and Catalog.

TENNESSEE
MARYVILLE QUADRANGLE
147-SW



Control by USC&GS, USGS, and TVA
Topography by Geological Survey from aerial
photographs by stereophotogrammetric methods
Field examination by Tennessee Valley Authority - 1940
Maps distributed by the Geological Survey
Approximate outline of Fort Loudoun Reservoir

MAGNETIC NORTH
TRUE NORTH
APPROXIMATE MEAN
DECLINATION, 1940

Scale 24000
1 inch = 2 miles
1 centimeter = 2 kilometers
1000 feet
5000 feet
10000 feet
Contour interval 20 feet
Datum is mean sea level

USGS
HISTORICAL FILE
TOPOGRAPHIC DIVISION
FILE COPY
Information and Catalog.

Polyconic projection, 1927 North American datum
10,000 foot grid based on Tennessee
rectangular coordinate system
ROUTES USUALLY TRAVELED
HARD, IMPERVIOUS SURFACES
OTHER SURFACE IMPROVEMENTS
U. S. ROUTE
STATE ROUTE
MARYVILLE, TENN.
147-SW
Edition of 1941
N3545-W8352.5/7.5

MAR 20 1942