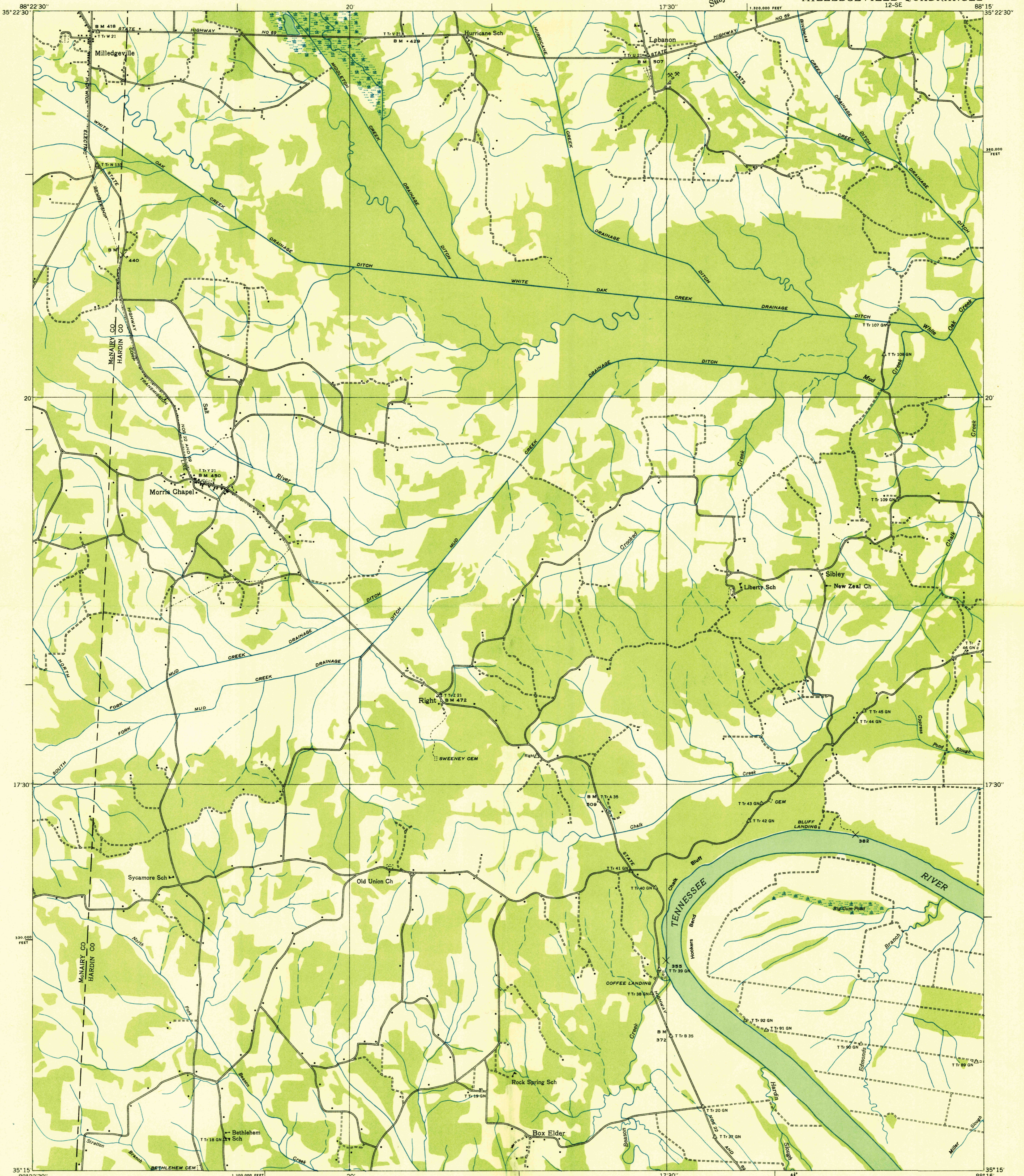
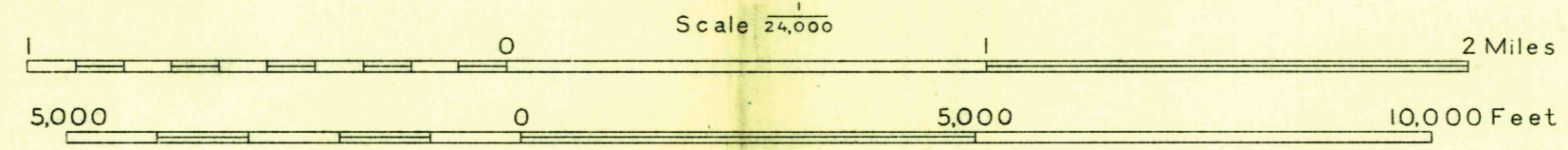


Advance sheet
Subject to correction



Albert Pike, Division Engineer
Compiled by U. S. Geological Survey from aerial photographs
Control by U. S. Geological Survey, U. S. Coast and Geodetic Survey
Corps of Engineers, U. S. Army and Tennessee Valley Authority
Field examination in 1936



Polyconic projection. 1927 North American datum
10,000 foot grid based on Tennessee
rectangular coordinate system

Trail
Probable drainage

APPROXIMATE MEAN
DECLINATION, 1986

MILLEDGEVILLE, TENN.
12-SE

USGS
HISTORICAL FILE
TOPOGRAPHIC DIVISION