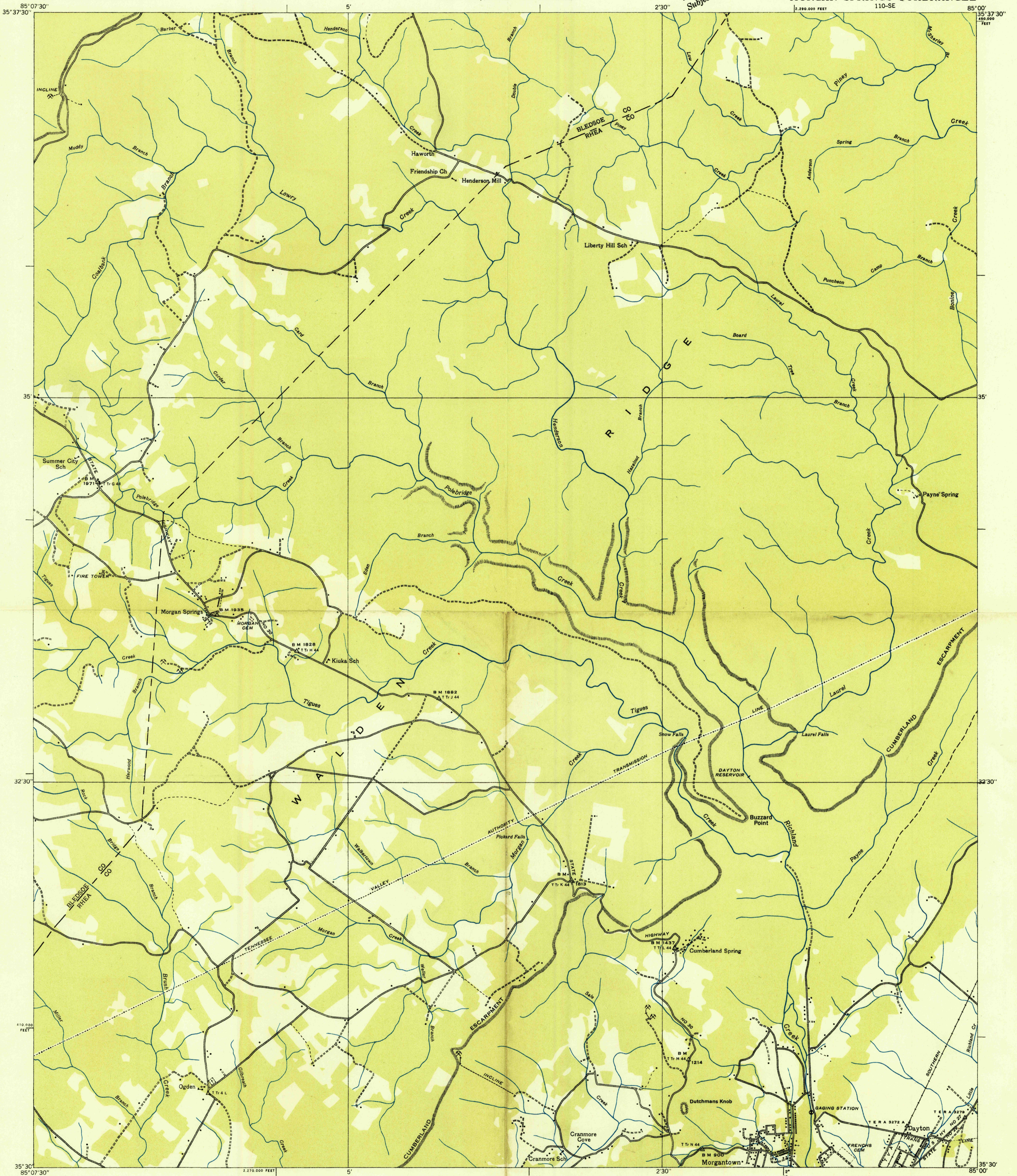
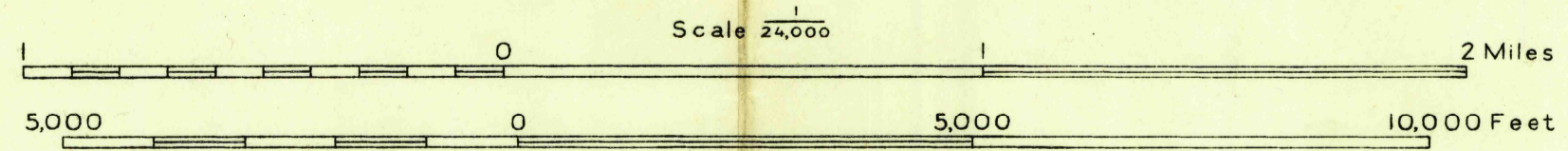


Advance sheet  
Subject to correction



Albert Pike, Division Engineer  
Compiled by U. S. Geological Survey from aerial photographs  
Control by U. S. Geological Survey, U. S. Coast and Geodetic Survey and  
Tenn. Em. Rel. Adm.  
Field examination in 1935



Datum is mean sea level

USGS  
HISTORICAL FILE  
TOPOGRAPHIC DIVISION

TRUE NORTH  
MAGNETIC NORTH

APPROXIMATE MEAN  
DECLINATION, 1955

Polyconic projection, 1927 North American datum  
10,000 foot grid based on Tennessee  
rectangular coordinate system

Ridge line  
Trail  
Rim Rock

MORGAN SPRINGS, TENN.  
110-SE

U.S.G.S.  
FILE COPY  
TOPOGRAPHIC DIVISION