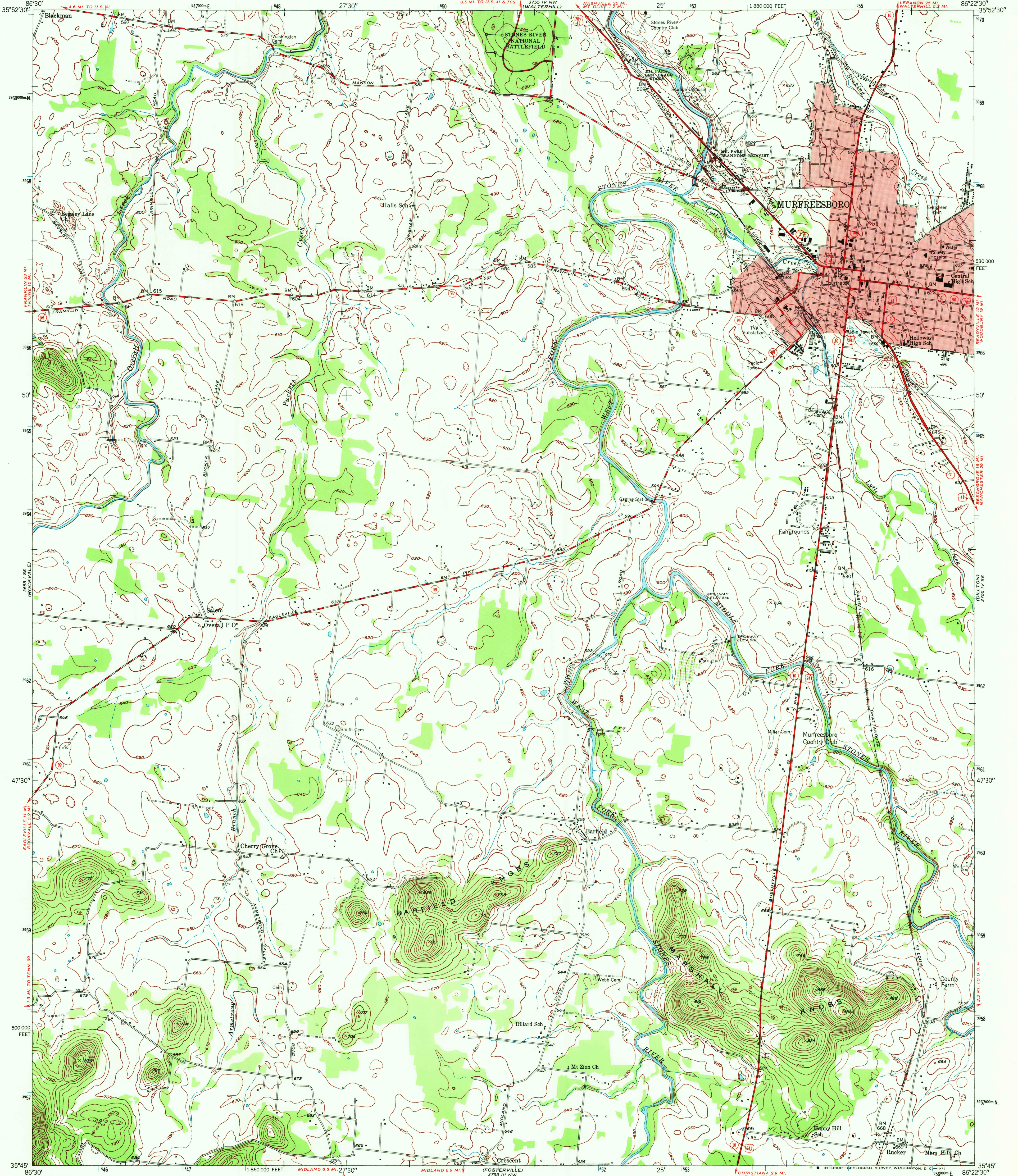


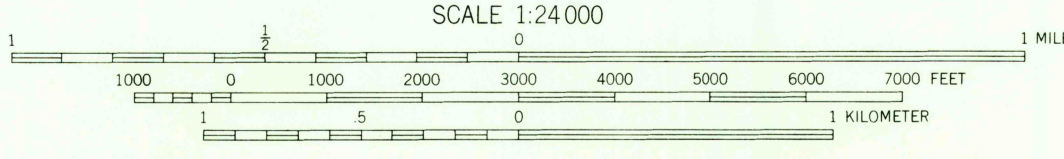
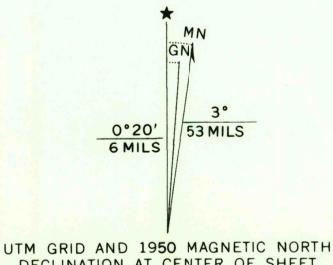
UNITED STATES
DEPARTMENT OF THE INTERIOR
GEOLOGICAL SURVEY

STATE OF TENNESSEE
DEPARTMENT OF CONSERVATION
DIVISION OF GEOLOGY

MURFREESBORO QUADRANGLE
TENNESSEE-RUTHERFORD CO.
7.5 MINUTE SERIES (TOPOGRAPHIC)
SW/4 MURFREESBORO 15' QUADRANGLE



Mapped by the Geological Survey and the Corps of Engineers
Edited and published by the Geological Survey
Control by USGS, USC&GS, USCE, and TVA
Culture and drainage in part compiled from aerial photographs
Topography by multiplex methods from aerial photographs taken 1950
and plane-table surveys 1950
Polyconic projection. 1927 North American datum
10,000-foot grid based on Tennessee coordinate system
Red tint indicates area in which only
landmark buildings are shown
1000-meter Universal Transverse Mercator grid ticks,
zone 16, shown in blue



CONTOUR INTERVAL 10 FEET
DATUM IS MEAN SEA LEVEL

THIS MAP COMPLIES WITH NATIONAL MAP ACCURACY STANDARDS
FOR SALE BY U. S. GEOLOGICAL SURVEY, WASHINGTON, D. C. 20242,
AND TENNESSEE DIVISION OF GEOLOGY, NASHVILLE, TENNESSEE 37219
A FOLDER DESCRIBING TOPOGRAPHIC MAPS AND SYMBOLS IS AVAILABLE ON REQUEST

ROAD CLASSIFICATION
Heavy-duty ——— 2 LANE 16 LANE Light-duty ———
Medium-duty ——— 4 LANE 16 LANE Unimproved dirt ———
U. S. Route ——— State Route ———

MURFREESBORO, TENN.
SW/4 MURFREESBORO 15' QUADRANGLE
N3545—W8622 5/7.5

1950
AMS 3755 IV SW—SERIES V841

USGS
HISTORICAL FILE
TOPOGRAPHIC DIVISION