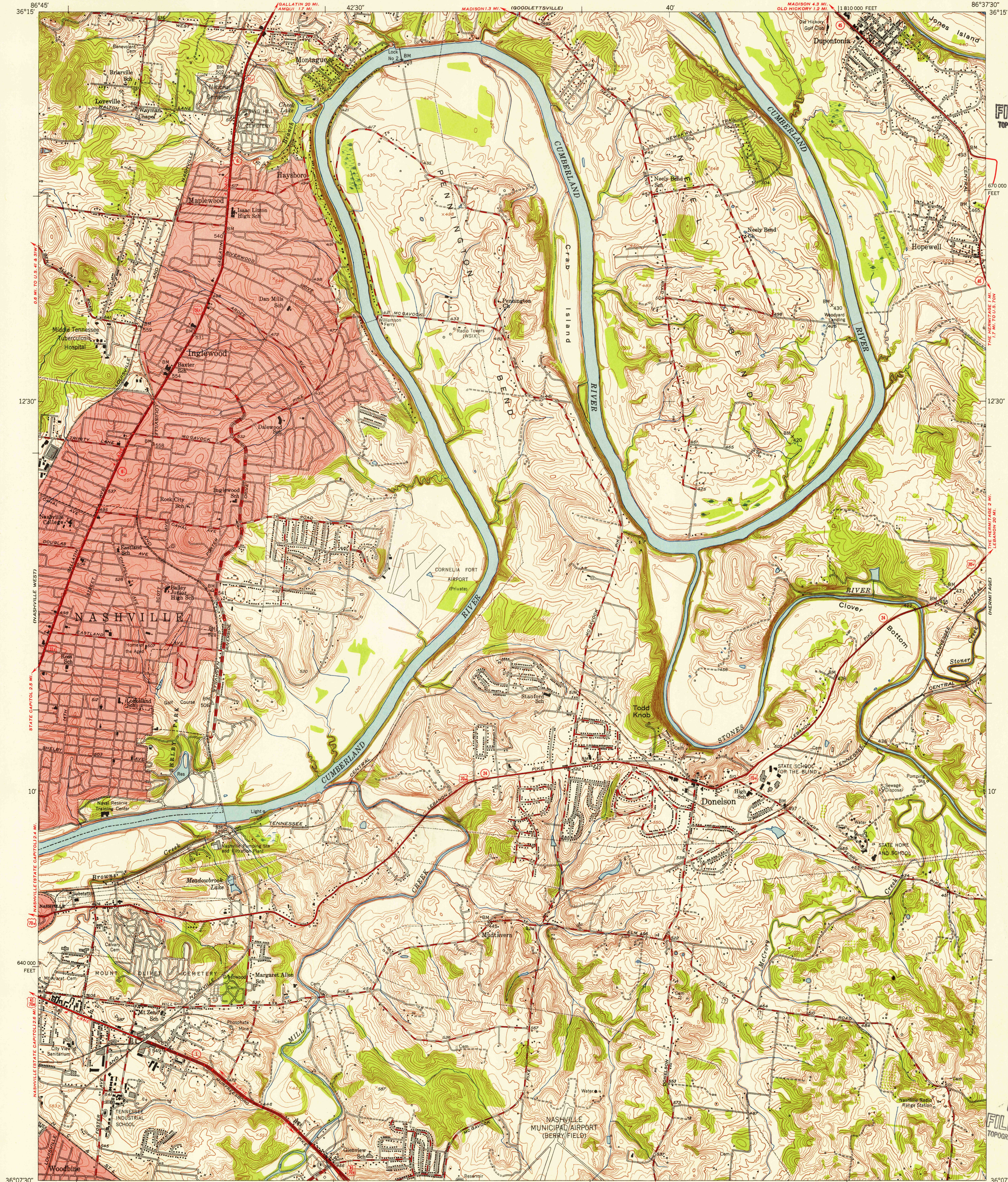


UNITED STATES
DEPARTMENT OF THE INTERIOR
GEOLOGICAL SURVEY

STATE OF TENNESSEE
DEPARTMENT OF CONSERVATION
DIVISION OF GEOLOGY

NASHVILLE EAST QUADRANGLE
TENNESSEE—DAVIDSON CO.
7.5 MINUTE SERIES (TOPOGRAPHIC)
NW/4 HERMITAGE 15' QUADRANGLE

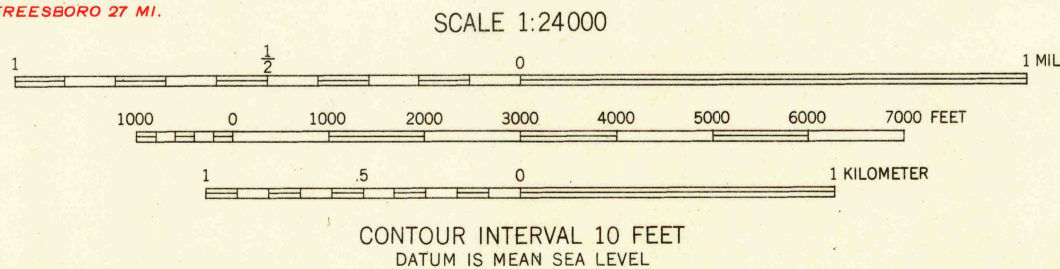


U.S.G.S.
FILE COPY
TOPOGRAPHIC DIVISION

U.S.G.S.
FILE COPY
TOPOGRAPHIC DIVISION

Maped, edited, and published by the Geological Survey
Control by USGS, USC&GS, USCE, and Tennessee Geodetic Survey
Topography from aerial photographs by multiplex methods
and Corps of Engineers, U. S. Army
Aerial photographs taken 1951. Field check 1952
Polyconic projection. 1927 North American datum
10,000-foot grid based on Tennessee coordinate system
Red tint indicates areas in which only
landmark buildings are shown

TRUE NORTH
MAGNETIC NORTH
APPROXIMATE MEAN
DECLINATION, 1952



USGS
HISTORICAL FILE
TOPOGRAPHIC DIVISION

TENNESSEE
QUADRANGLE LOCATION

ROAD CLASSIFICATION
Heavy-duty 4 LANE 16 LANE Light-duty
Medium-duty 4 LANE 16 LANE Unimproved dirt
U. S. Route State Route

NASHVILLE EAST, TENN.
NW/4 HERMITAGE 15' QUADRANGLE
N3607.5—W8637.5/7.5
1952

THIS MAP COMPLIES WITH NATIONAL MAP ACCURACY STANDARDS
FOR SALE BY U. S. GEOLOGICAL SURVEY, WASHINGTON 25, D. C.
AND TENNESSEE DIVISION OF GEOLOGY, NASHVILLE, TENN.
A FOLDER DESCRIBING TOPOGRAPHIC MAPS AND SYMBOLS IS AVAILABLE ON REQUEST

OCT 18 1954
4170