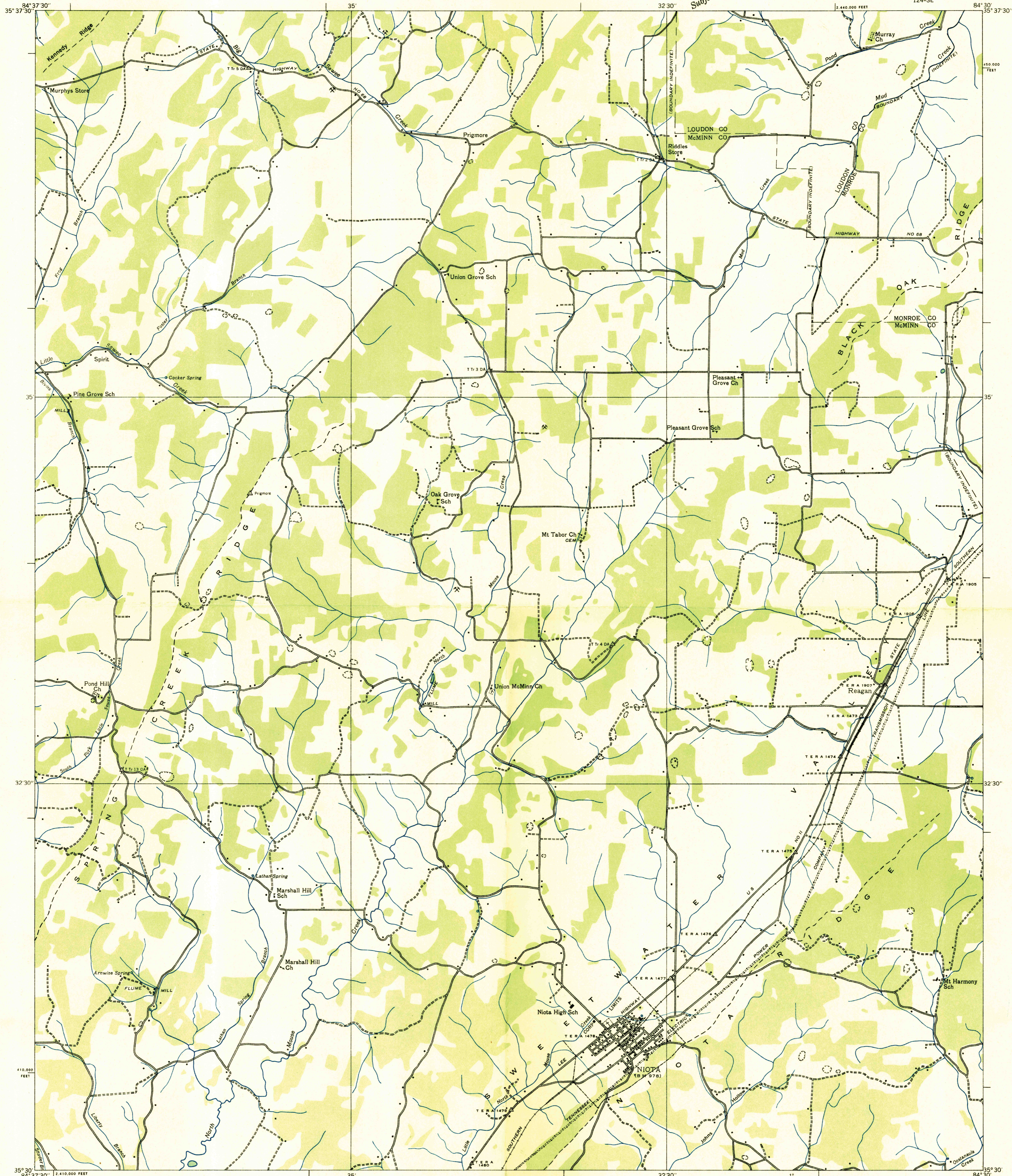
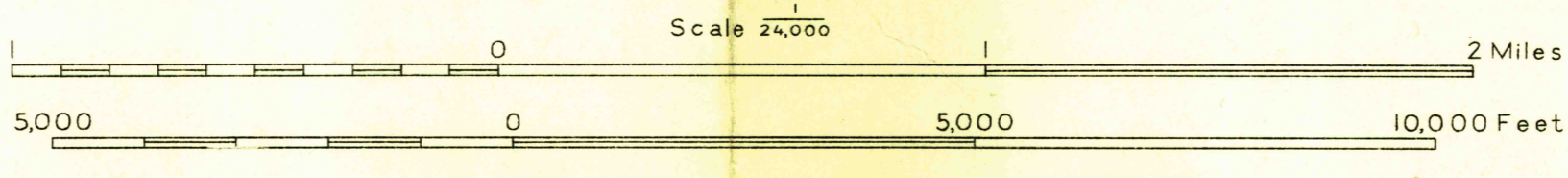


Advance sheet  
Subject to correction



Albert Pike, Division Engineer  
Compiled by U. S. Geological Survey from aerial photographs  
Control by U. S. Geological Survey, U. S. Coast and  
Geodetic Survey and Tenn. Em. Rel. Adm.  
Field examination in 1935



Datum is mean sea level

Polyconic projection. 1927 North American datum  
10,000 foot grid based on Tennessee  
angular coordinate system  
USGS HISTORICAL TOPOGRAPHIC DIVISION  
APPROXIMATE MEAN DECLINATION, 1955  
Ridge line  
Trail  
Sinks

NIOTA, TENN.  
124-SE