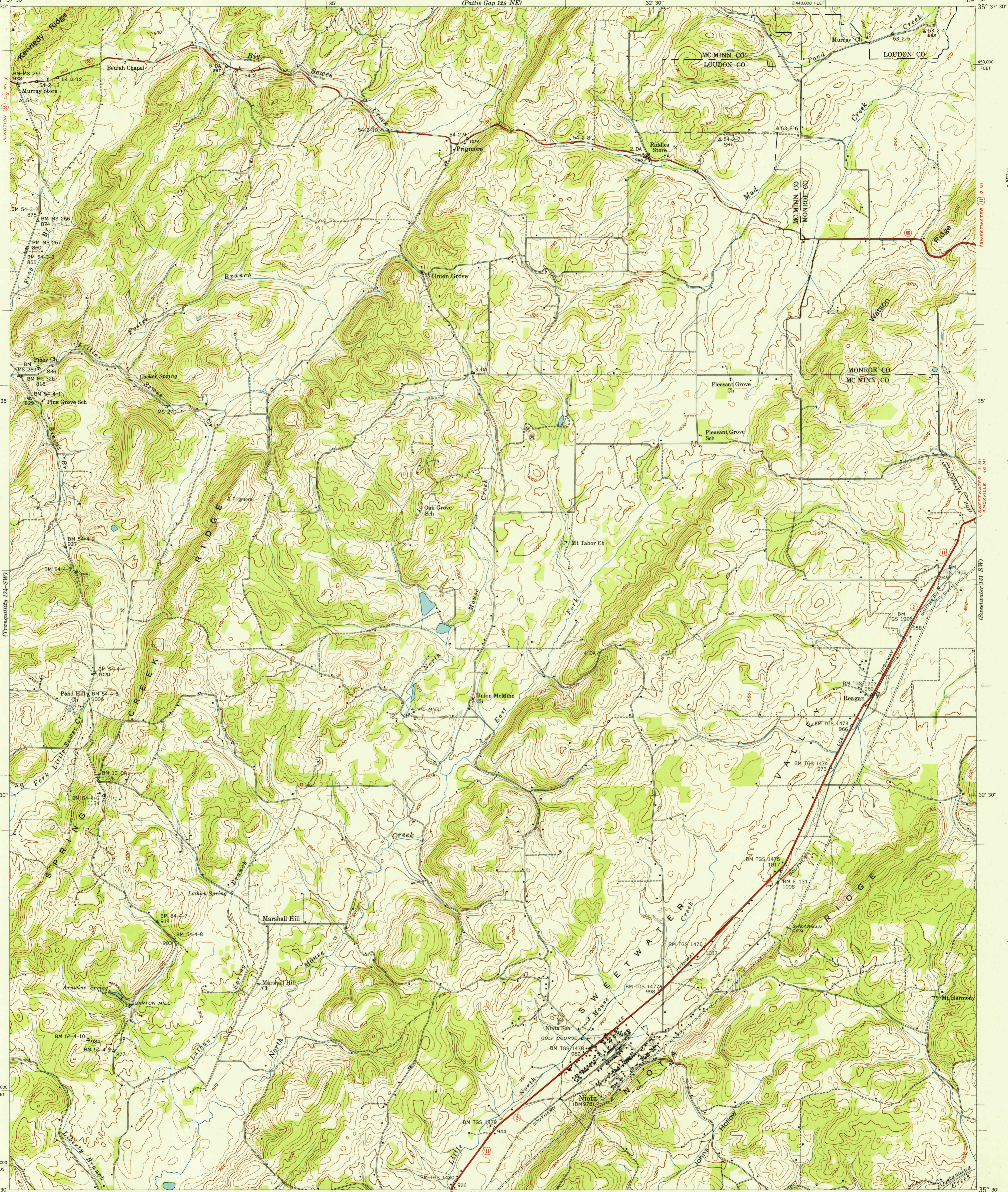


U.S.G.S.  
FILE COPY  
Inspection and Editing



Control by USCGS, USGS, TVA, and WPA  
Topography by Geological Survey from aerial  
photographs by stereophotogrammetric methods  
Field examination by Tennessee Valley Authority, 1941  
Maps distributed by the Geological Survey

APPROXIMATE MEAN  
DECLINATION 1942

Scale 24000  
0 1 2 Miles  
0 1 2 Kilometers  
0 1000 2000 Feet

Contour interval 20 feet  
Datum is mean sea level

USGS  
HISTORICAL FILE  
TOPOGRAPHIC DIVISION

Reproduced by the Coast and Geodetic Survey  
Polyconic projection, 1927 North American datum  
10,000 foot grid based on Tennessee  
rectangular coordinate system  
5,000 yard grid based on U. S. zone system, B  
ROUTES USUALLY TRAVELED  
HARD IMPERVIOUS SURFACES  
OTHER SURFACE IMPROVEMENTS  
① U.S. ROUTE ② STATE ROUTE

NIOTA, TENN  
124-SE  
Edition of 1942  
N3530-W8430/7.5

JAN 28 1943