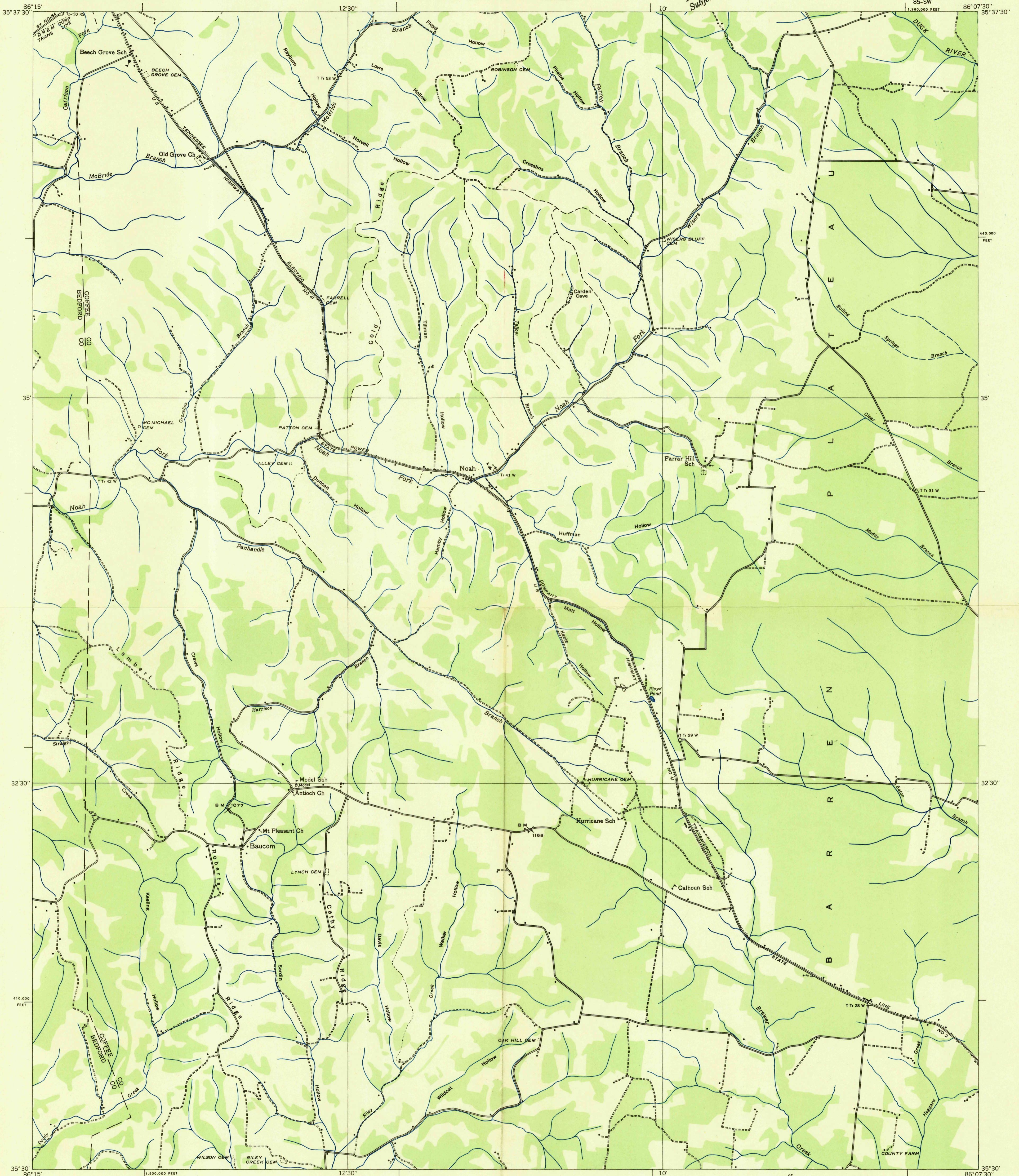
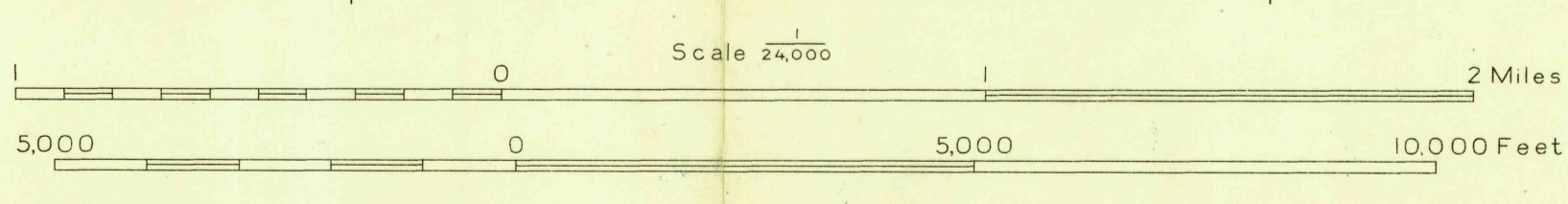


Advance sheet
Subject to correction



Albert Pike, Division Engineer
Compiled by U. S. Geological Survey from aerial photographs
Control by U. S. Geological Survey and U. S. Coast and Geodetic Survey
Field examination in 1936



Polyconic projection, 1927 North American datum
10,000 foot grid based on Tennessee
rectangular coordinate system
USGS HISTORICAL FILE TOPOGRAPHIC DIVISION
TRUE NORTH
MAGNETIC NORTH
APPROXIMATE MEAN DECLINATION, 1936
Ridge line
Trail
Sinks
Probable drainage
NOAH, TENN.
85-SW