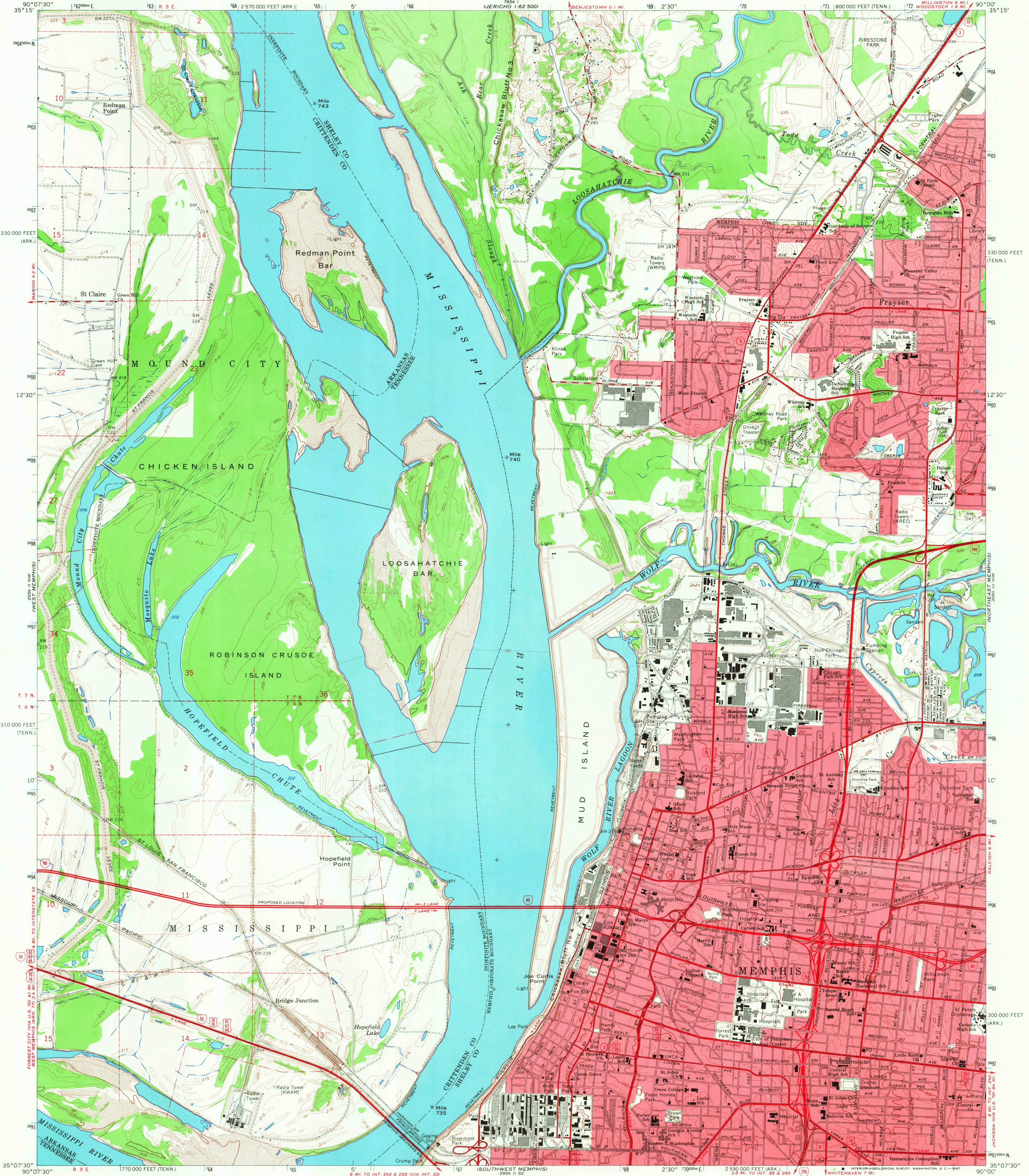
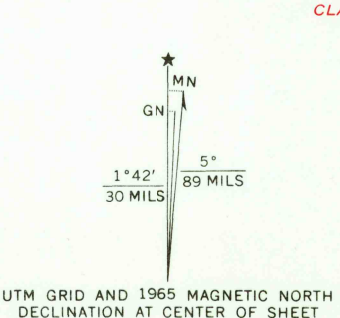


UNITED STATES
DEPARTMENT OF THE INTERIOR
GEOLOGICAL SURVEY

NORTHWEST MEMPHIS QUADRANGLE
TENNESSEE-ARKANSAS
7.5 MINUTE SERIES (TOPOGRAPHIC)
NE 1/4 MEMPHIS 15' QUADRANGLE



Mapped, edited, and published by the Geological Survey
Control by USGS, USC&GS, USCE, and Tennessee Geodetic Survey
Topography by photogrammetric methods from aerial
photographs taken 1963. Field checked 1965
Polyconic projection. 1927 North American datum
10,000-foot grids based on Tennessee coordinate system, and
Arkansas coordinate system, north zone
1000-meter Universal Transverse Mercator grid ticks,
zone 15, shown in blue
Fine red dashed lines indicate selected fence and field lines where
generally visible on aerial photographs. This information is unchecked
Red tint indicates areas in which only landmark buildings are shown



CONTOUR INTERVAL 10 FEET
DOTTED LINES REPRESENT 5-FOOT CONTOURS
DATUM IS MEAN SEA LEVEL
THIS MAP COMPLIES WITH NATIONAL MAP ACCURACY STANDARDS
FOR SALE BY U.S. GEOLOGICAL SURVEY, DENVER, CO. 80225 OR WASHINGTON, D.C. 20242,
TENNESSEE DIVISION OF GEOLOGY, NASHVILLE, TENN. 37219,
ARKANSAS GEOLOGICAL COMMISSION, LITTLE ROCK, ARK. 72201,
AND MISSISSIPPI RIVER COMMISSION, VICKSBURG, MISS. 39331
A FOLDER DESCRIBING TOPOGRAPHIC MAPS AND SYMBOLS IS AVAILABLE ON REQUEST

USGS
HISTORICAL FILE
TOPOGRAPHIC DIVISION
U.S.G.S.
TENNESSEE
QUADRANGLE LOCATION
TOPOGRAPHIC DIVISION

ROAD CLASSIFICATION
Heavy-duty — Light-duty
Medium-duty — Unimproved dirt
Interstate Route — U.S. Route — State Route
NORTHWEST MEMPHIS, TENN.-ARK.
NE 1/4 MEMPHIS 15' QUADRANGLE
N3507.5-W9000/7.5
1965
AMS 2954 II NE-SERIES V84 I