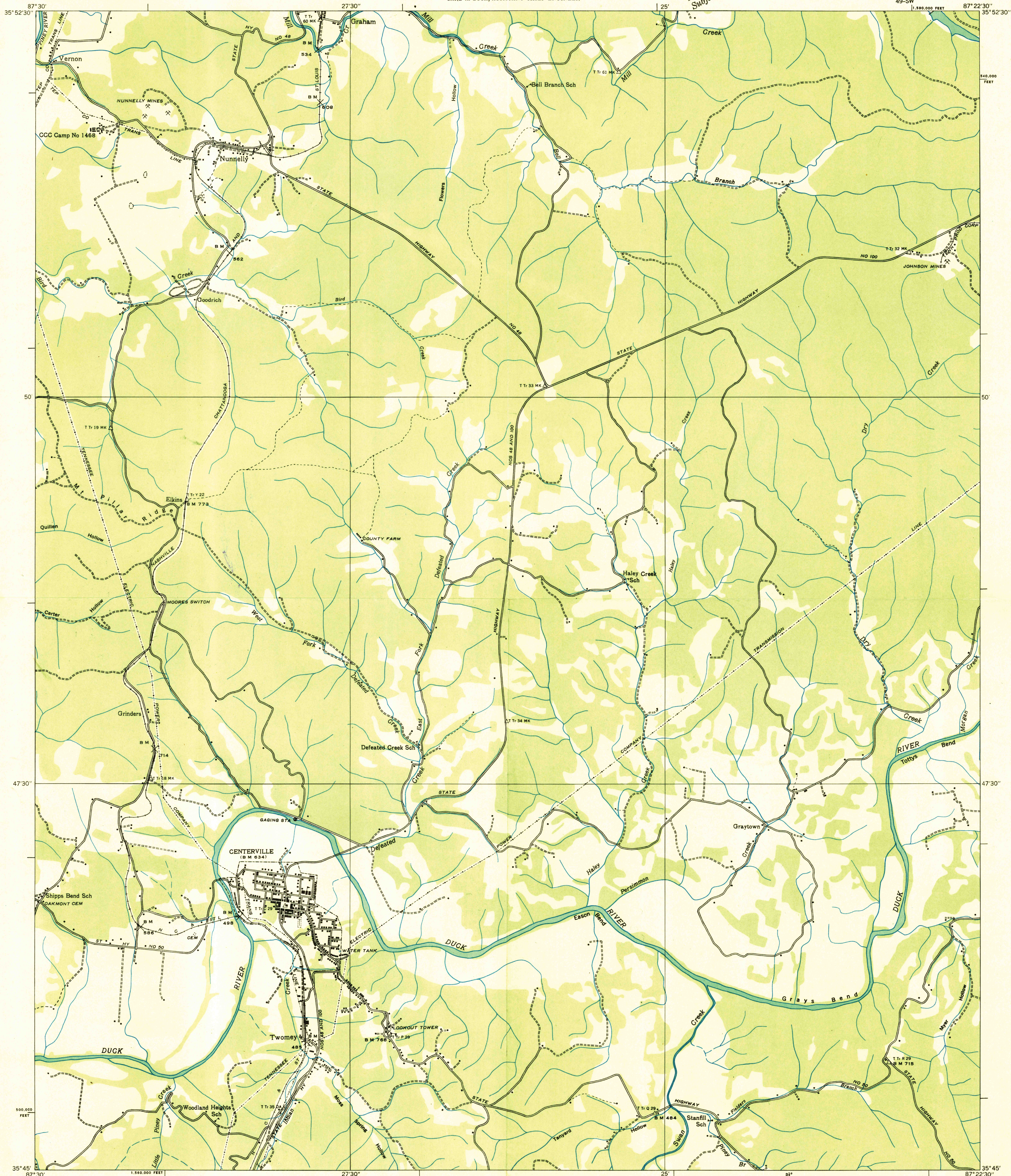
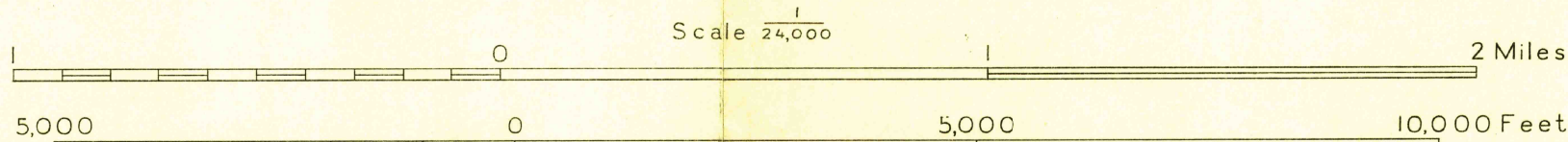


Advance sheet
Subject to correction



Albert Pike, Division Engineer
Compiled by U. S. Geological Survey from aerial photographs
Control by U. S. Geological Survey and U. S. Coast and Geodetic Survey
Field examination in 1936



Datum is mean sea level

TRUE NORTH
MAGNETIC NORTH
APPROXIMATE MEAN
DECLINATION, 1936

Polyconic projection. 1927 North American datum
10,000 foot grid based on Tennessee
rectangular coordinate system

Trail
Probable drainage
Sinks

NUNNELLY, TENN.
49-SW

USGS
HISTORICAL FILE
TOPOGRAPHIC DIVISION