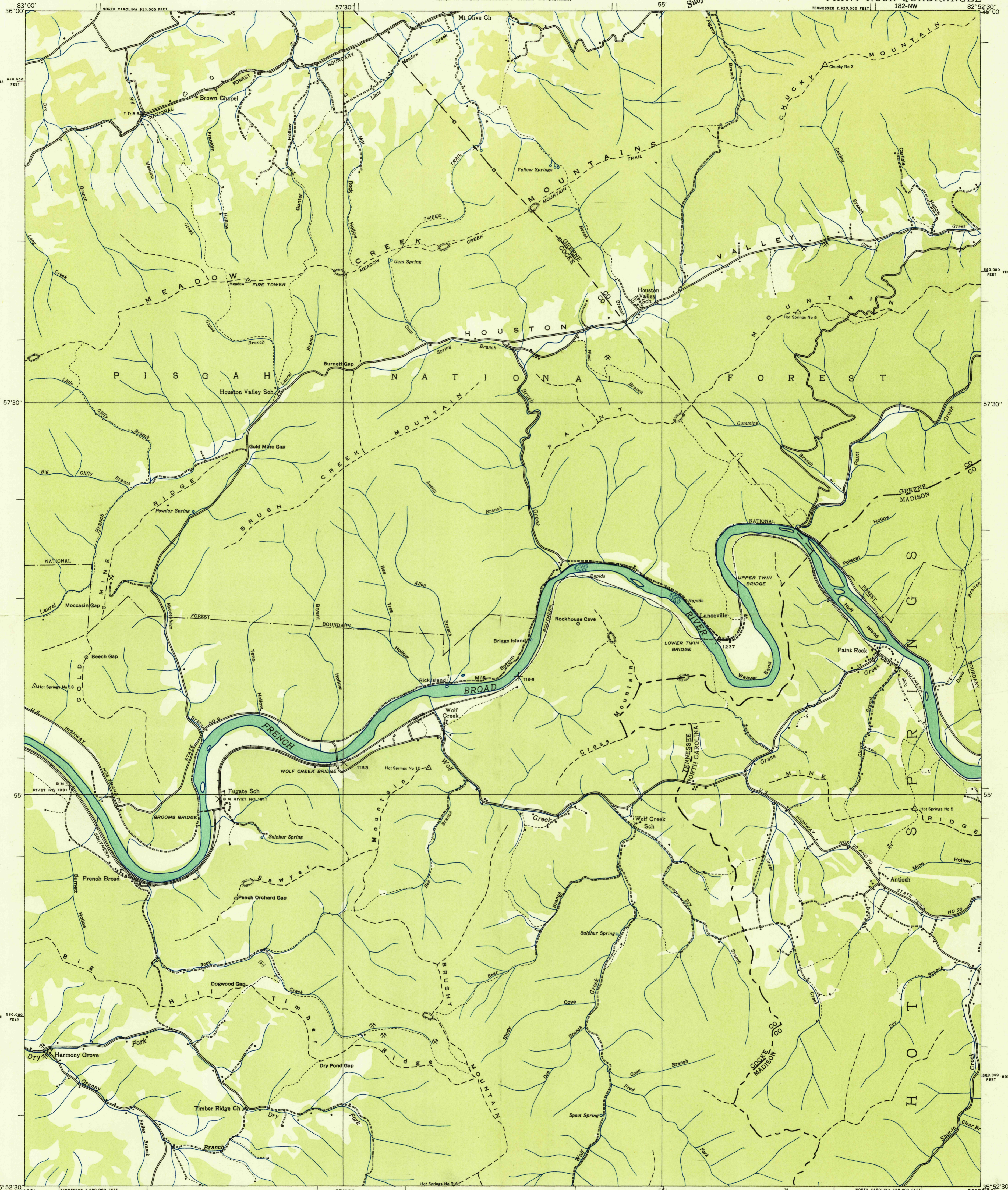
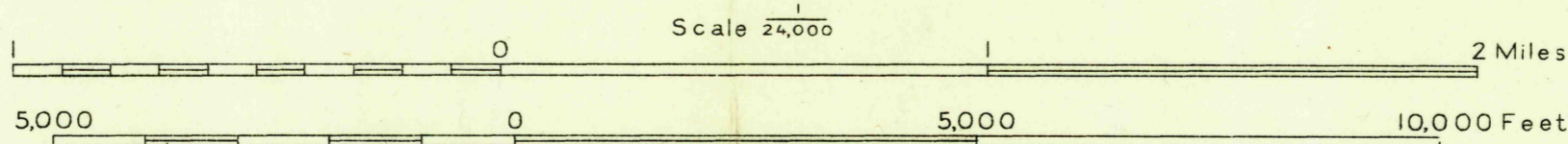


Advance sheet
Subject to correction



Albert Pike, Division Engineer
Compiled by U. S. Geological Survey from aerial photographs
Control by U. S. Geological Survey,
U. S. Coast and Geodetic Survey and
Corps of Engineers, U. S. Army
Field examination in 1935



Datum is mean sea level

TRUE NORTH
MAGNETIC NORTH
APPROXIMATE MEAN
DECLINATION, 1956

Polygonic projection. 1927 North American datum
10,000 foot grid based on Tennessee and
North Carolina rectangular coordinate systems

Ridge line
Trail
Sinks

PAINT ROCK, TENN.-N. C.
182-NW

USGS
HISTORICAL FILE
TOPOGRAPHIC DIVISION