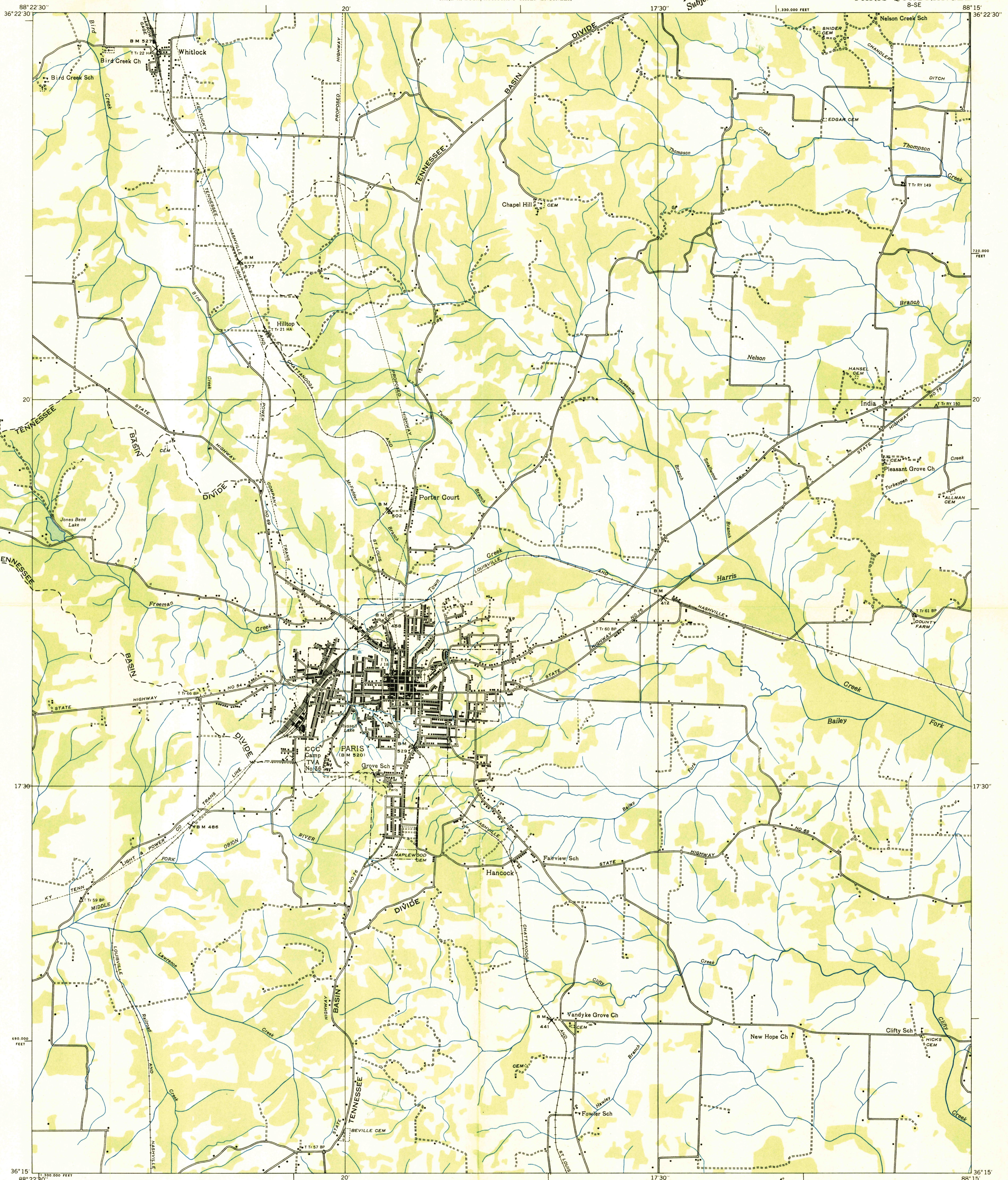
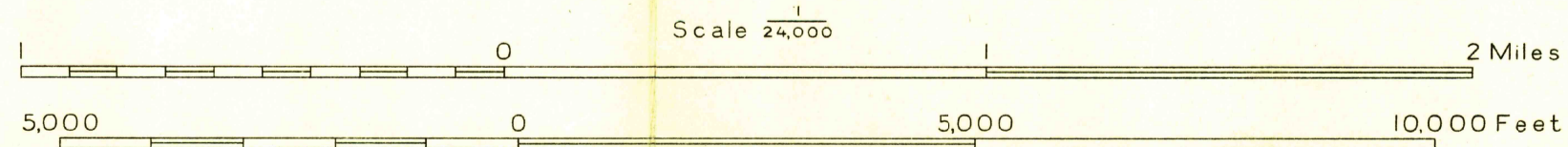


Advance sheet.  
Subject to correction.



Albert Pike, Division Engineer  
Compiled by U. S. Geological Survey from aerial photographs  
Control by U. S. Geological Survey and U. S. Coast and Geodetic Survey  
Field examination in 1936



Datum is mean sea level

Polyconic projection. 1927 North American datum  
10,000 foot grid based on Tennessee  
rectangular coordinate system  
USGS HISTORICAL FILE TOPOGRAPHIC DIVISION  
Ridge line - - - - -  
Trail - - - - -  
APPROXIMATE MEAN DECLINATION, 1956  
PARIS, TENN.  
8-SE