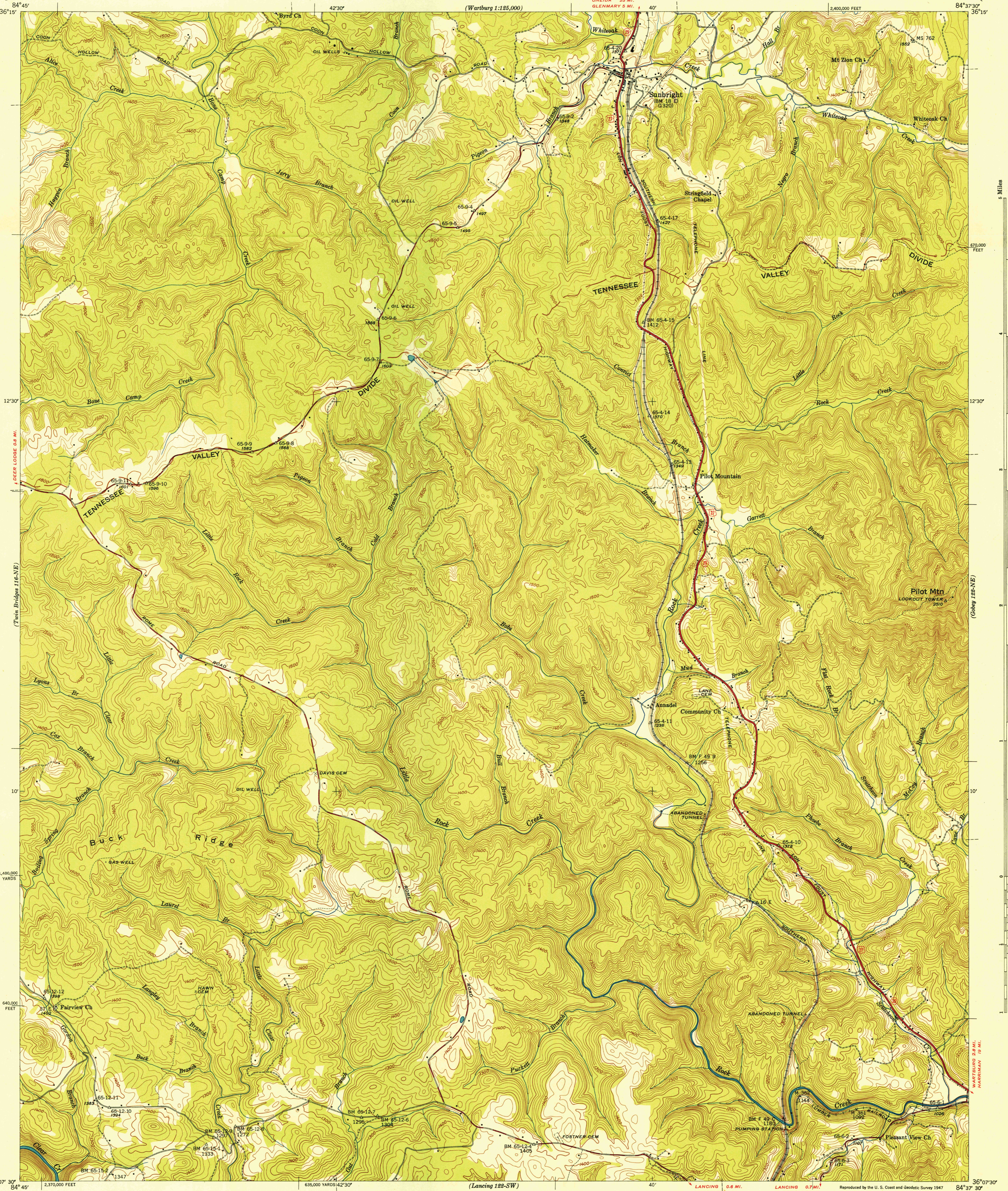


U. S. G. S.
FILE COPY
Inspection and Editing.

UNITED STATES
DEPARTMENT OF THE INTERIOR
GEOLOGICAL SURVEY

UNITED STATES
TENNESSEE VALLEY AUTHORITY
MAPS AND SURVEYS DIVISION

TENNESSEE
(MORGAN COUNTY)
PILOT MOUNTAIN QUADRANGLE
122-NW



(Wartburg 1:125,000)
84° 45'
36° 15'
12° 30'
10'
640,000 FEET
36° 07' 30"

(Wartburg 1:125,000)
84° 37' 30"
36° 15'
12° 30'
10'
640,000 FEET
36° 07' 30"

Control by USC&GS, USGS, TVA, and WPA
Topography by Geological Survey from aerial
photographs by stereophotogrammetric methods
Field examination by Tennessee Valley Authority, 1943
Maps distributed by the Geological Survey

TRUE NORTH
MAGNETIC NORTH
APPROXIMATE MEAN
DECLINATION, 1946

Scale 24 000
1" = 2 Miles
1" = 2 Kilometers
10000 Feet

Contour interval 20 feet
Datum is mean sea level

USGS
HISTORICAL FILE
TOPOGRAPHIC DIVISION
Inspection and Editing.

Reproduced by the U. S. Coast and Geodetic Survey 1947
Polyconic projection, 1927 North American datum
10,000 foot grid based on Tennessee
rectangular coordinate system
5,000 yard grid based on U. S. zone system, B
ROUTES USUALLY TRAVELED
HARD, IMPERVIOUS SURFACES
OTHER SURFACE IMPROVEMENTS
U.S. ROUTE STATE ROUTE

PILOT MOUNTAIN, TENN.
122-NW
Edition of 1946

N3607.5 - W8437.5/7.5
MAR 24 1947