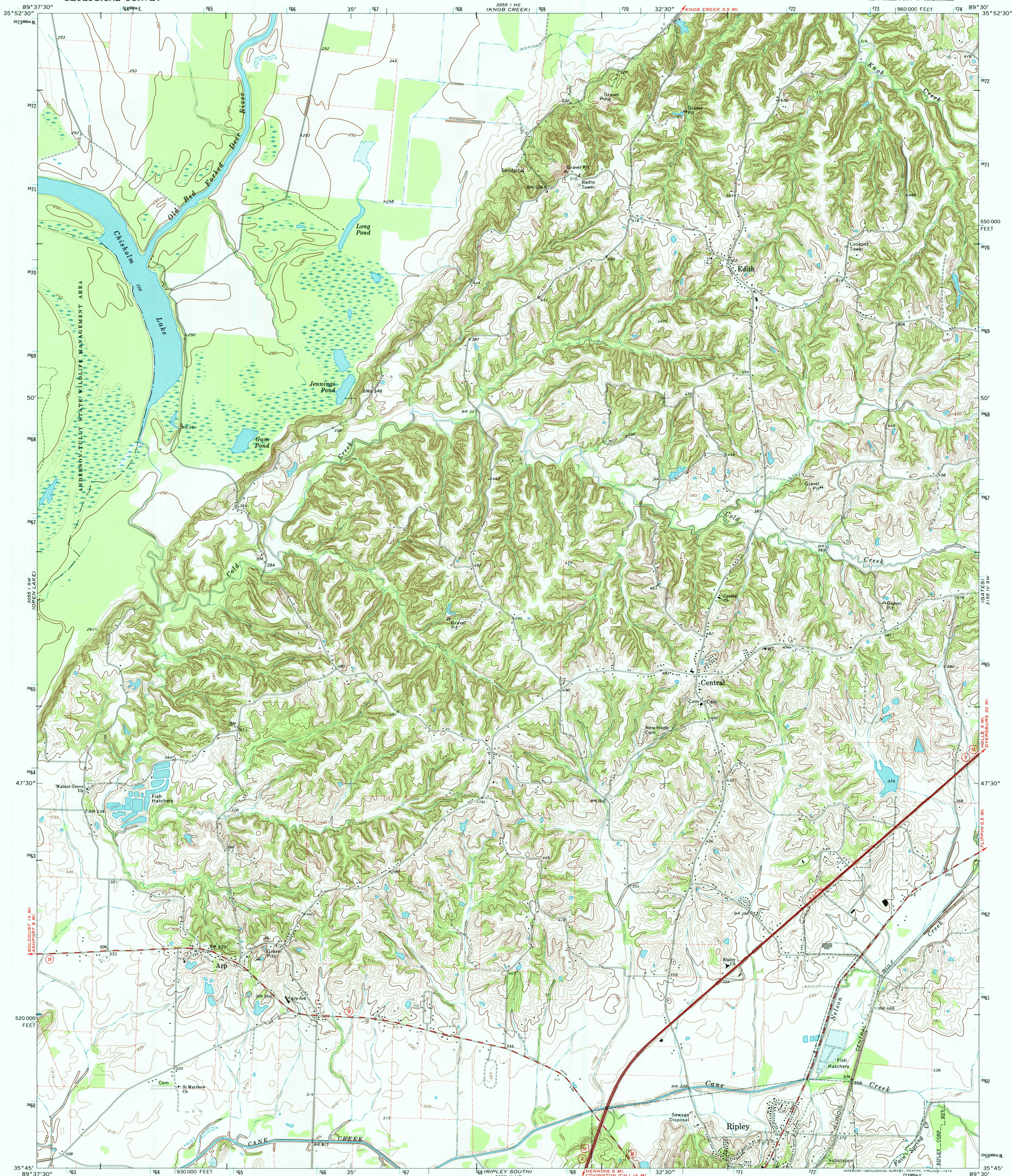
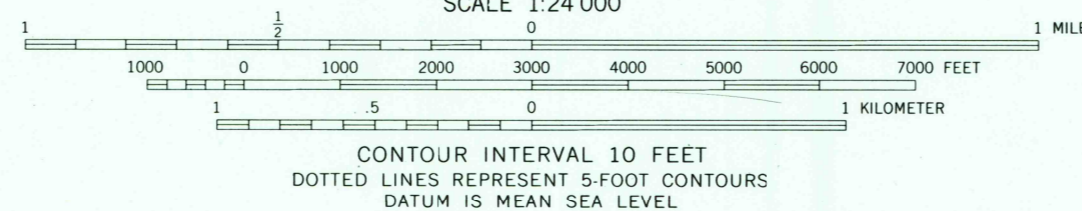
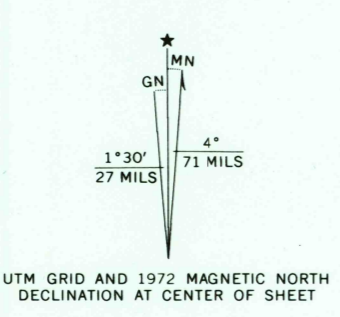


UNITED STATES
DEPARTMENT OF THE INTERIOR
GEOLOGICAL SURVEY

RIPLEY NORTH QUADRANGLE
TENNESSEE—LAUDERDALE CO.
7.5 MINUTE SERIES (TOPOGRAPHIC)
SE 1/4 HALES POINT 15' QUADRANGLE



Mapped, edited, and published by the Geological Survey
Control by USGS and USC&GS
Topography by photogrammetric methods from aerial photographs taken 1971. Field checked 1972
Projection and 10,000-foot grid ticks: Tennessee coordinate system (Lambert conformal conic)
1000-meter Universal Transverse Mercator grid ticks, zone 16, shown in blue. 1927 North American datum
Fine red dashed lines indicate selected fence and field lines where generally visible on aerial photographs. This information is unchecked



ROAD CLASSIFICATION
Primary highway, hard surface
Secondary highway, hard surface
Light-duty road, hard or improved surface
Unimproved road
Interstate Route
U. S. Route
State Route

THIS MAP COMPLIES WITH NATIONAL MAP ACCURACY STANDARDS
FOR SALE BY U. S. GEOLOGICAL SURVEY, RESTON, VIRGINIA 22092
AND TENNESSEE DIVISION OF GEOLOGY, NASHVILLE, TENNESSEE 37219
A FOLDER DESCRIBING TOPOGRAPHIC MAPS AND SYMBOLS IS AVAILABLE ON REQUEST

RECEIVED
JUN 30 1999
USGS NMD
HISTORICAL MAP ARCHIVES

RIPLEY NORTH, TENN.
SE 1/4 HALES POINT 15' QUADRANGLE
N 3545—W 8930/7.5
1972
AMS 3055 1 SE—SERIES V 841

