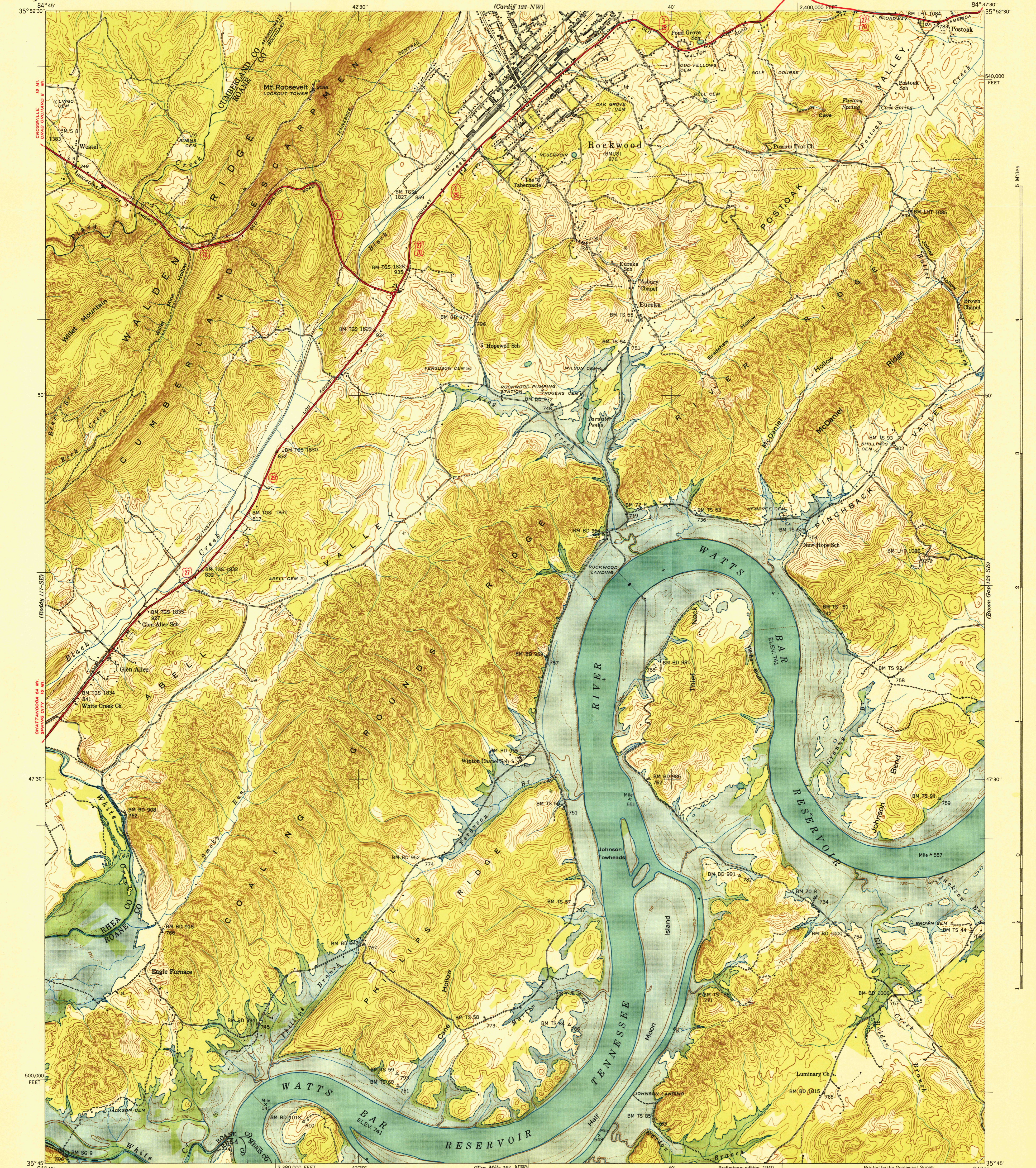


FILE COPY

KNOXVILLE 46 MI.
HARRISMAN 9 MI.
KINGSTON 8 MI.

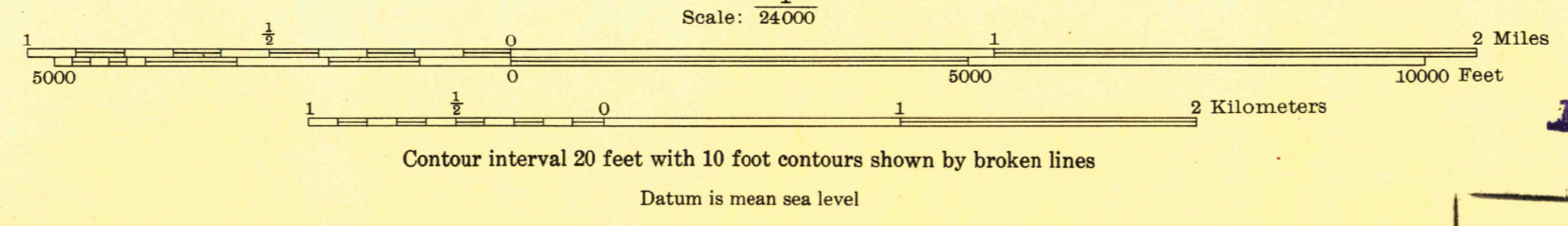


Control by USC & GS, USGS, and TVA
Topography by Geological Survey from aerial
photographs by stereophotogrammetric methods
Field examination by Tennessee Valley Authority—1939

Blue stipple indicates areas to be
submerged by Watts Bar Reservoir.

TRUE NORTH
MAGNETIC NORTH

APPROXIMATE MEAN
DECLINATION, 1940



USGS
HISTORICAL FILE
TOPOGRAPHIC DIVISION

U.S.G.S.
FILE COPY
Inspection and Editing.

Printed by the Geological Survey

Polyconic projection, 1927 North American datum
10,000 foot grid based on Tennessee
rectangular coordinate system

ROUTES USUALLY TRAVELED
HARD, IMPERVIOUS SURFACES
OTHER SURFACE IMPROVEMENTS

US ROUTE 27 STATE ROUTE 28

ROCKWOOD, TENN.
123-SW

N3545-W8437.5/7.5

NOV 13 1940