

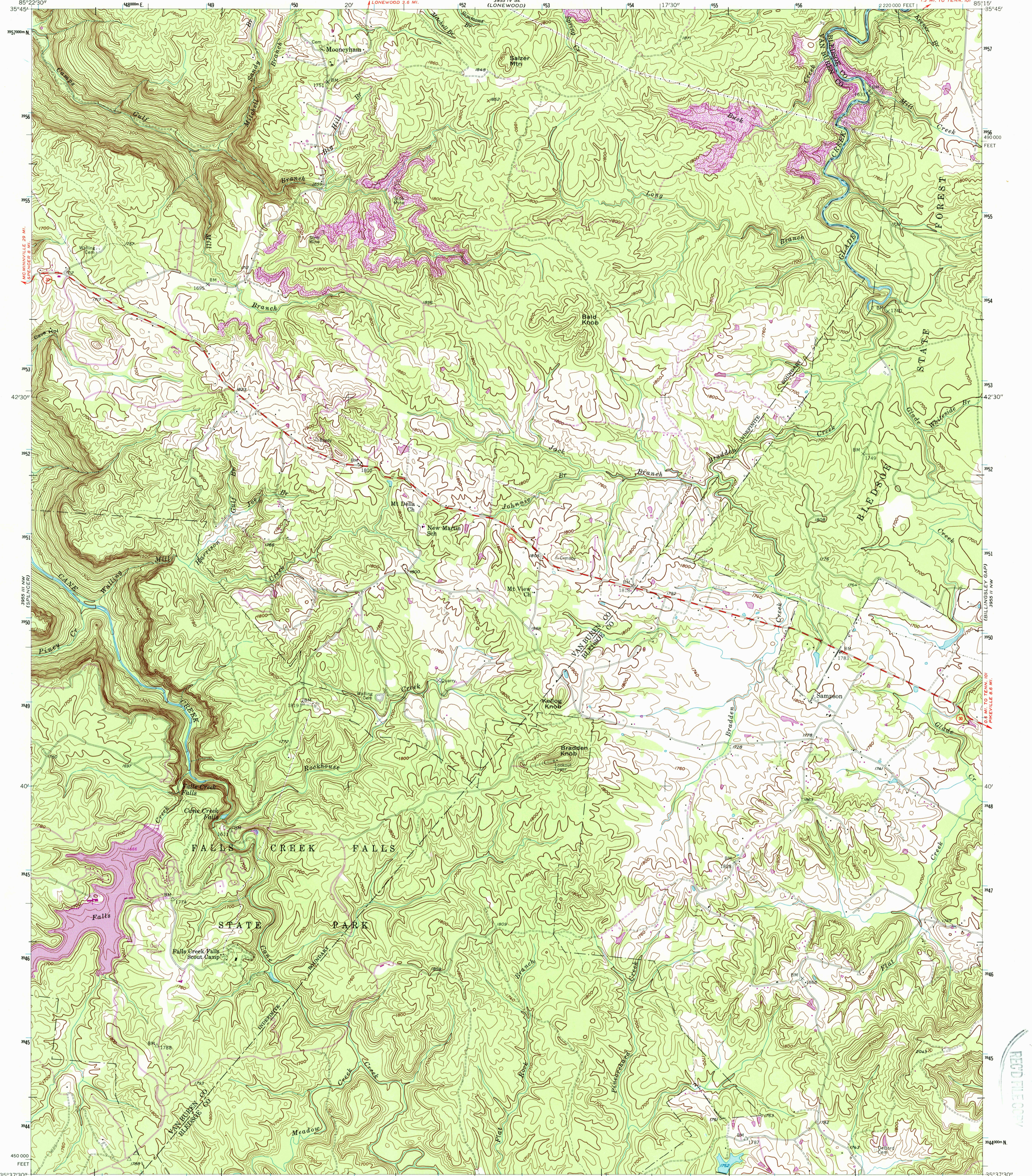
35° 37' 30" N
85° 22' 30" W

UNITED STATES
DEPARTMENT OF THE INTERIOR
GEOLOGICAL SURVEY

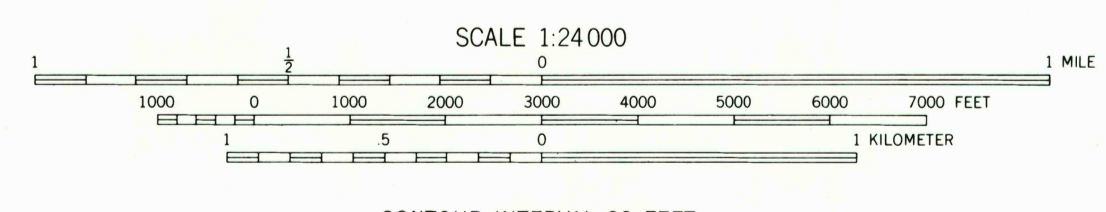
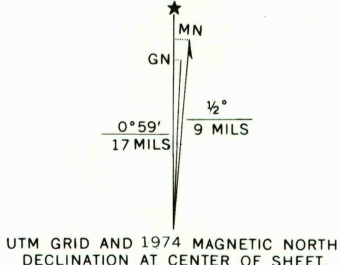
STATE OF TENNESSEE
DEPARTMENT OF CONSERVATION
DIVISION OF GEOLOGY

SAMPSON QUADRANGLE
TENNESSEE
7.5 MINUTE SERIES (TOPOGRAPHIC)

35° 37' 30" N
85° 22' 30" W



Mapped, edited, and published by the Geological Survey
Control by USGS, USC&GS, and TVA
Topography from aerial photographs by multiplex methods
Aerial photographs taken 1950. Field check 1954
Polyconic projection. 1927 North American datum
10,000-foot grid based on Tennessee coordinate system
1000-meter Universal Transverse Mercator grid ticks,
zone 16, shown in blue
Revision shown in purple compiled in cooperation with
State of Tennessee agencies from aerial photographs
taken 1974. This information not field checked
To place on the predicted North American Datum 1983,
move the projection lines 6 meters south and
4 meters west as shown by dashed corner ticks



CONTOUR INTERVAL 20 FEET
NATIONAL GEODETIC VERTICAL DATUM OF 1929

THIS MAP COMPLIES WITH NATIONAL MAP ACCURACY STANDARDS
FOR SALE BY U. S. GEOLOGICAL SURVEY, DENVER, COLORADO 80225, OR RESTON, VIRGINIA 22092
TENNESSEE DIVISION OF GEOLOGY, NASHVILLE, TENNESSEE 37219
A FOLDER DESCRIBING TOPOGRAPHIC MAPS AND SYMBOLS IS AVAILABLE ON REQUEST



ROAD CLASSIFICATION

Heavy-duty	Light-duty
Medium-duty	Unimproved dirt
U. S. Route	State Route

SAMPSON, TENN.
35085-F3-TF-024
1954
PHOTOREVISED 1974
DMA 3955 III NE-SERIES V841

REC'D FILE COPY
SEP 14 1988