

(Fountain City 146-SW)

UNITED STATES
DEPARTMENT OF THE INTERIOR
GEOLOGICAL SURVEY

UNITED STATES
TENNESSEE VALLEY AUTHORITY
MAPS AND SURVEYS DIVISION

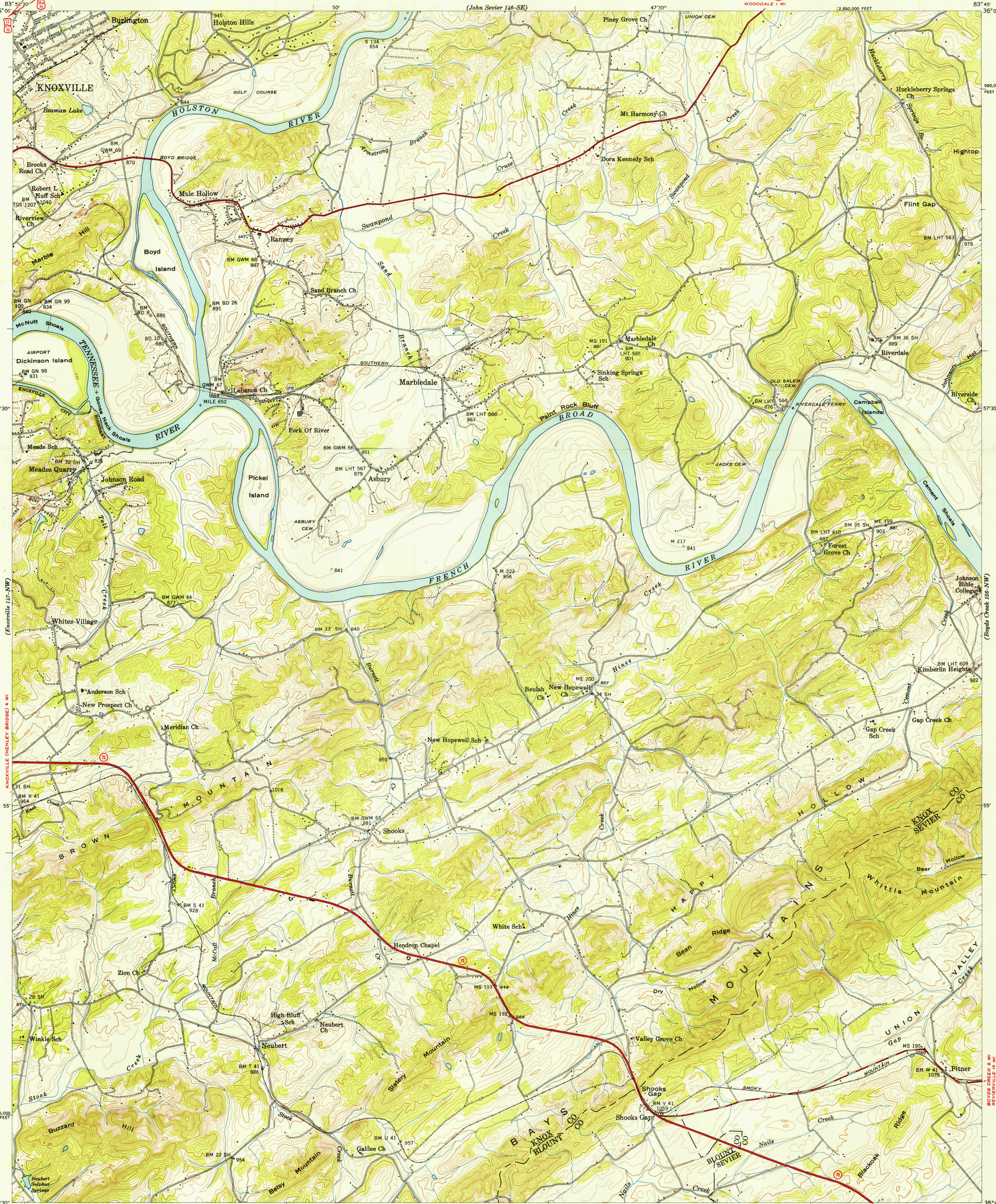
U. S. G. S.
FILE COPY
Inspection and Editing.

TENNESSEE
SHOOKS GAP QUADRANGLE
147-NE

(Macon 155-SW)

U. S. G. S.
FILE COPY
Inspection and Editing.

(Maryville 147-SW)



Control by USCGS, USGS, and TVA.
Topography by Geological Survey from aerial photographs by stereophotogrammetric methods.
Field examination by Tennessee Valley Authority, 1940
Maps distributed by the Geological Survey

Construction of Fort Loudoun Dam will raise the Tennessee River and tributaries in the west portion of this area. Proposed pool elevation, 812 feet.

Scale: 24000
1 inch = 2 miles
1 inch = 2 kilometers

Contour interval 20 feet with 10 foot contours shown by broken line
Datum is mean sea level

Printed by the Geological Survey
USGS
HISTORICAL FILE
TOPOGRAPHIC DIVISION

U. S. G. S.
FILE COPY
Inspection and Editing.

SHOOKS GAP, TENN.
147-NE
Edition of 1940
reprinted 1947
N 3552.5-W 8345/7.5

U. S. ROUTE
STATE ROUTE

2185